

## Product datasheet for **TA351058**

### CD57 (B3GAT1) Rabbit Polyclonal Antibody

#### Product data:

Product Type:	Primary Antibodies
Applications:	IHC, WB
Recommended Dilution:	ELISA: 1000-2000, WB: 200-1000, IHC: 50-200
Reactivity:	Human, Mouse, Rat
Host:	Rabbit
Isotype:	IgG
Clonality:	Polyclonal
Immunogen:	Synthetic peptide of human B3GAT1
Formulation:	pH7.4 PBS, 0.05% NaN <sub>3</sub> , 40% Glycerol
Concentration:	lot specific
Purification:	Antigen affinity purification
Conjugation:	Unconjugated
Storage:	Store at -20°C as received.
Stability:	Stable for 12 months from date of receipt.
Predicted Protein Size:	38 kDa
Gene Name:	beta-1,3-glucuronyltransferase 1
Database Link:	<a href="#">NP_473366</a> <a href="#">Entrez Gene 76898 MouseEntrez Gene 117108 RatEntrez Gene 27087 Human Q9P2W7</a>
Background:	The protein encoded by this gene is a member of the glucuronyltransferase gene family. These enzymes exhibit strict acceptor specificity, recognizing nonreducing terminal sugars and their anomeric linkages. This gene product functions as the key enzyme in a glucuronyl transfer reaction during the biosynthesis of the carbohydrate epitope HNK-1 (human natural killer-1, also known as CD57 and LEU7). Alternate transcriptional splice variants have been characterized.
Synonyms:	CD57; GLCATP; GLCUATP; HNK1; LEU7; NK-1; NK1
Protein Families:	Transmembrane



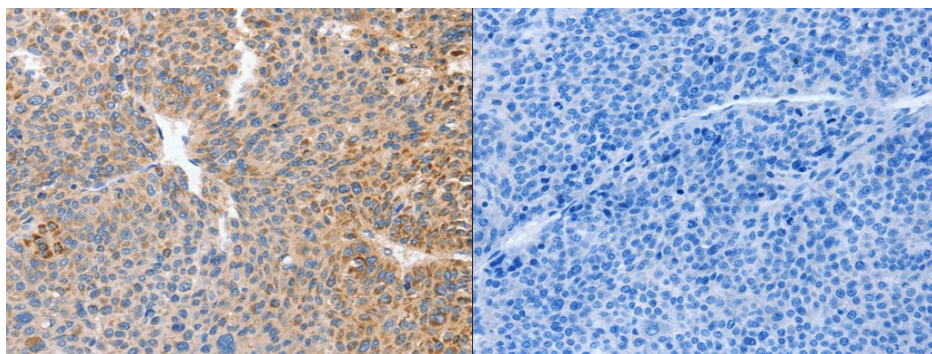
[View online »](#)

Protein Pathways: Chondroitin sulfate biosynthesis, Heparan sulfate biosynthesis, Metabolic pathways

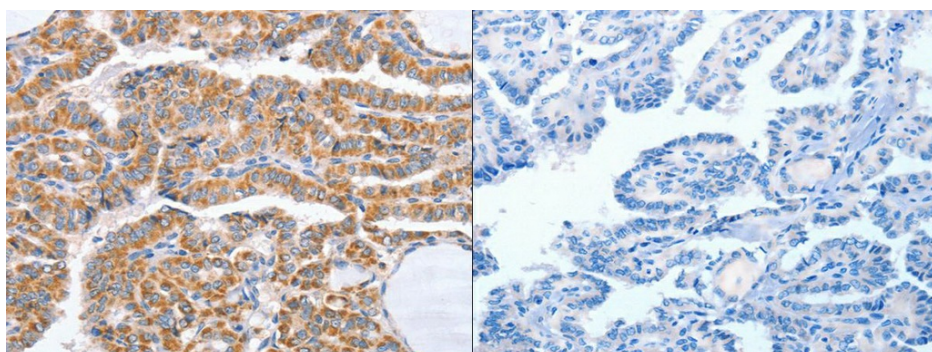
### Product images:



Gel: 10%SDS-PAGE, Lysate: 40 ug, Lane: Human chromaffin cell tumor tissue, Primary antibody: (B3GAT1 Antibody) at dilution 1/600, Secondary antibody: Goat anti rabbit IgG at 1/8000 dilution, Exposure time: 3 minutes



The image on the left is immunohistochemistry of paraffin-embedded Human liver cancer tissue using (B3GAT1 Antibody) at dilution 1/50, on the right is treated with synthetic peptide. (Original magnification:  $\times 200$ )



The image on the left is immunohistochemistry of paraffin-embedded Human thyroid cancer tissue using (B3GAT1 Antibody) at dilution 1/50, on the right is treated with synthetic peptide. (Original magnification:  $\times 200$ )