

Product datasheet for **TA351054**

CD47 Rabbit Polyclonal Antibody

Product data:

Product Type:	Primary Antibodies
Applications:	IHC, WB
Recommended Dilution:	ELISA: 1000-5000, WB: 200-1000, IHC: 50-200
Reactivity:	Human
Host:	Rabbit
Isotype:	IgG
Clonality:	Polyclonal
Immunogen:	Synthetic peptide of human CD47
Formulation:	pH7.4 PBS, 0.05% NaN ₃ , 40% Glycerol
Concentration:	lot specific
Purification:	Antigen affinity purification
Conjugation:	Unconjugated
Storage:	Store at -20°C as received.
Stability:	Stable for 12 months from date of receipt.
Predicted Protein Size:	35 kDa
Gene Name:	CD47 molecule
Database Link:	NP_942088 Entrez Gene 961 Human Q08722

Background: This gene encodes a membrane protein, which is involved in the increase in intracellular calcium concentration that occurs upon cell adhesion to extracellular matrix. The encoded protein is also a receptor for the C-terminal cell binding domain of thrombospondin, and it may play a role in membrane transport and signal transduction. This gene has broad tissue distribution, and is reduced in expression on Rh erythrocytes. Alternatively spliced transcript variants have been found for this gene.

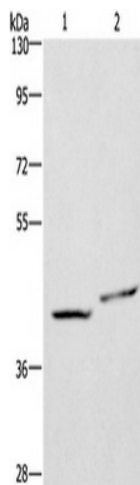
Synonyms: IAP; MER6; OA3
Protein Families: Druggable Genome, Transmembrane



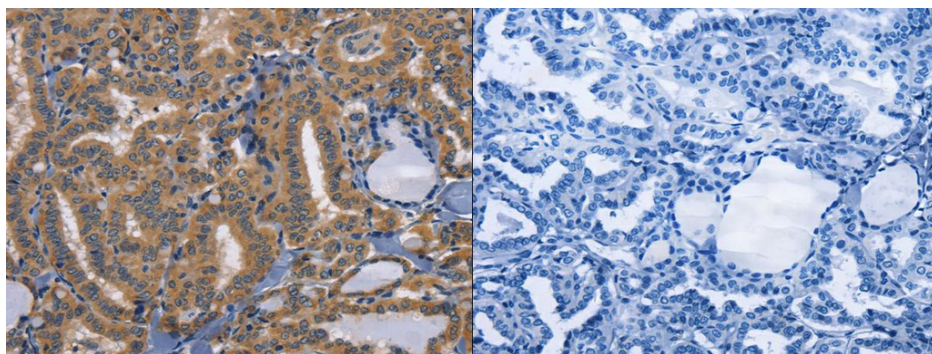
[View online »](#)

Protein Pathways: ECM-receptor interaction

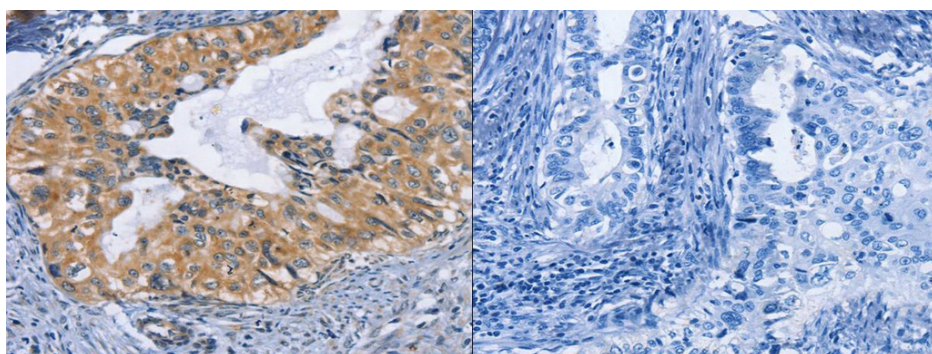
Product images:



Gel: 8%SDS-PAGE, Lysate: 40 ug, Lane 1-2: SKOV3 cells, Hela cells, Primary antibody: (CD47 Antibody) at dilution 1/200, Secondary antibody: Goat anti rabbit IgG at 1/8000 dilution, Exposure time: 20 seconds



The image on the left is immunohistochemistry of paraffin-embedded Human thyroid cancer tissue using (CD47 Antibody) at dilution 1/50, on the right is treated with synthetic peptide. (Original magnification: ×200)



The image on the left is immunohistochemistry of paraffin-embedded Human cervical cancer tissue using (CD47 Antibody) at dilution 1/50, on the right is treated with synthetic peptide. (Original magnification: ×200)