

Product datasheet for **TA351047**

SIGLEC6 Rabbit Polyclonal Antibody

Product data:

| | |
|-------------------------|---|
| Product Type: | Primary Antibodies |
| Applications: | IHC, WB |
| Recommended Dilution: | WB: 200-1000 WB positive control: A549 cell lysate IHC: 50-300 Positive control: Human liver cancer Predicted cell location: Secreted and Cell membrane |
| Reactivity: | Human |
| Host: | Rabbit |
| Isotype: | IgG |
| Clonality: | Polyclonal |
| Immunogen: | Synthetic peptide of human SIGLEC6 |
| Formulation: | pH7.4 PBS, 0.05% NaN ₃ , 40% Glycerol |
| Concentration: | lot specific |
| Purification: | Antigen affinity purification |
| Conjugation: | Unconjugated |
| Storage: | Store at -20°C as received. |
| Stability: | Stable for 12 months from date of receipt. |
| Predicted Protein Size: | 50 kDa |
| Gene Name: | sialic acid binding Ig like lectin 6 |
| Database Link: | NP_942142 Entrez Gene 946 Human O43699 |



[View online »](#)

Background:

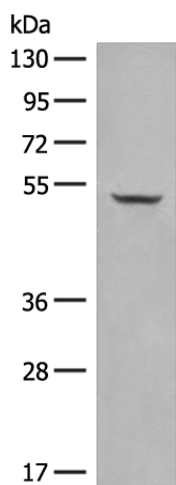
The SIGLEC6 gene is located on 19q13.3, which is where the CD33 gene is located. Putative adhesion molecule that mediates sialic-acid dependent binding to cells. Binds to alpha-2,6-linked sialic acid. The sialic acid recognition site may be masked by cis interactions with sialic acids on the same cell surface. Expressed at high levels in placenta (cyto- and syncytiotrophoblastic cells) and at lower levels in spleen, peripheral blood leukocytes (predominantly B-cells) and small intestine.

Synonyms:

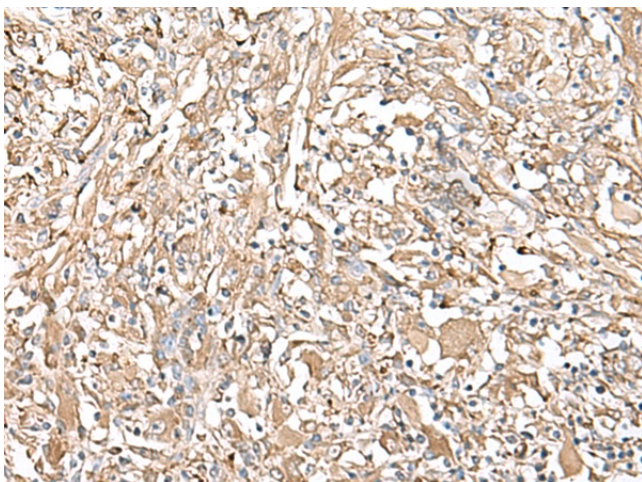
CD33L; CD33L1; CD33L2; CD327; CDW327; OBBP1

Protein Families:

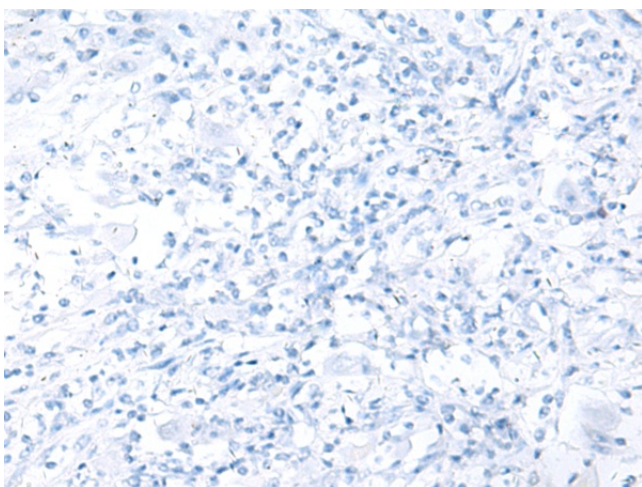
Druggable Genome, Secreted Protein, Transmembrane

Product images:

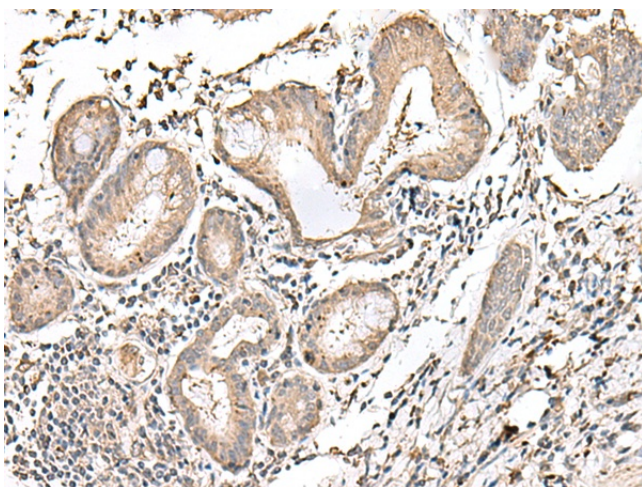
Gel: 8%SDS-PAGE
Lysate: 40 μ g
Lane: A549 cell lysate
Primary antibody: TA351047 (SIGLEC6 Antibody) at dilution 1/200
Secondary antibody: Goat anti rabbit IgG at 1/8000 dilution
Exposure time: 40 seconds



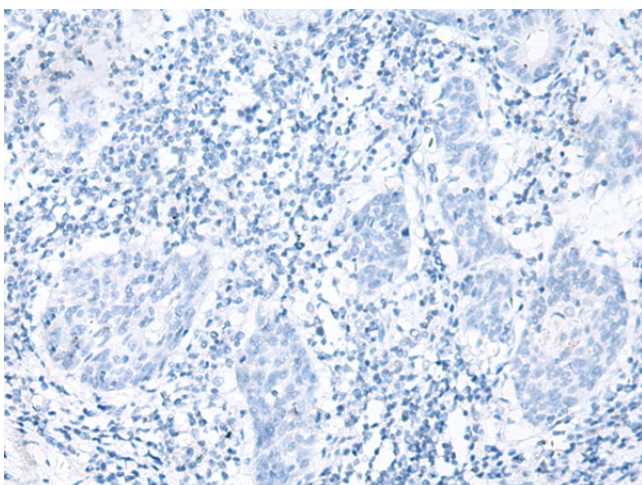
Immunohistochemistry of paraffin-embedded Human liver cancer tissue using TA351047 (SIGLEC6 Antibody) at dilution 1/60 (Original magnification: \times 200)



Immunohistochemistry of paraffin-embedded Human liver cancer tissue using TA351047 (SIGLEC6 Antibody) at dilution 1/60, treated with synthetic peptide. (Original magnification: ×200)



Immunohistochemistry of paraffin-embedded Human esophagus cancer tissue using TA351047 (SIGLEC6 Antibody) at dilution 1/60 (Original magnification: ×200)



Immunohistochemistry of paraffin-embedded Human esophagus cancer tissue using TA351047 (SIGLEC6 Antibody) at dilution 1/60, treated with synthetic peptide. (Original magnification: ×200)