

## Product datasheet for **TA351045**

### NCR1 Rabbit Polyclonal Antibody

#### Product data:

Product Type:	Primary Antibodies
Applications:	IHC, WB
Recommended Dilution:	WB: 500-2000 WB positive control: Mouse lung tissue lysate IHC: 50-100 Positive control: Human liver cancer Predicted cell location: Cell membrane
Reactivity:	Human, Mouse
Host:	Rabbit
Isotype:	IgG
Clonality:	Polyclonal
Immunogen:	Synthetic peptide of human NCR1
Formulation:	pH7.4 PBS, 0.05% NaN <sub>3</sub> , 40% Glycerol
Concentration:	lot specific
Purification:	Antigen affinity purification
Conjugation:	Unconjugated
Storage:	Store at -20°C as received.
Stability:	Stable for 12 months from date of receipt.
Predicted Protein Size:	34 kDa
Gene Name:	natural cytotoxicity triggering receptor 1
Database Link:	<a href="#">NP_004820</a> <a href="#">Entrez Gene 9437 Human</a> <a href="#">O76036</a>

**Background:** Natural cytotoxicity triggering receptor 1 is a protein that in humans is encoded by the NCR1 gene. NCR1 has also been designated as CD335 (cluster of differentiation 335). Cytotoxicity-activating receptor that may contribute to the increased efficiency of activated natural killer (NK) cells to mediate tumor cell lysis. Interacts with CD247 and FCER1G. Selectively expressed by both resting and activated NK cells.



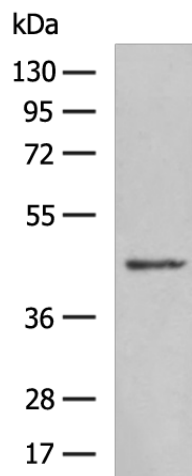
[View online »](#)

**Synonyms:** CD335; LY94; NK-p46; NKP46

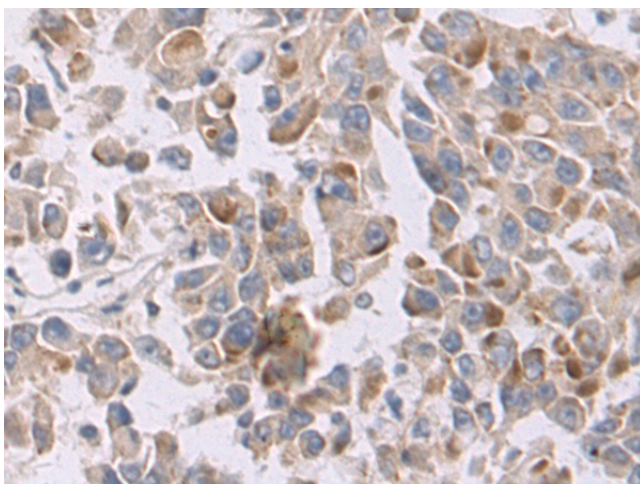
**Protein Families:** Druggable Genome, Transmembrane

**Protein Pathways:** Natural killer cell mediated cytotoxicity

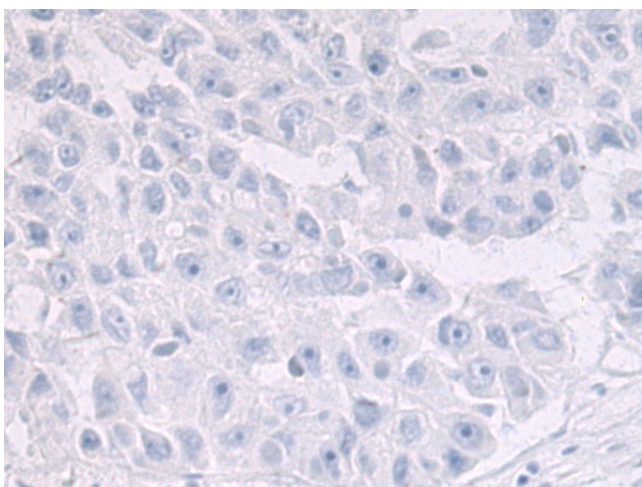
### Product images:



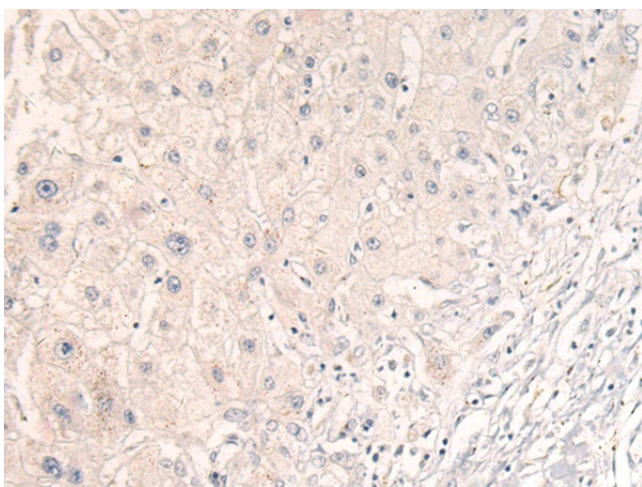
Gel: 8%SDS-PAGE  
 Lysate: 40 µg  
 Lane: A549 cell lysate  
 Primary antibody: TA351045 (NCR1 Antibody) at dilution 1/550  
 Secondary antibody: Goat anti rabbit IgG at 1/5000 dilution  
 Exposure time: 1 minute



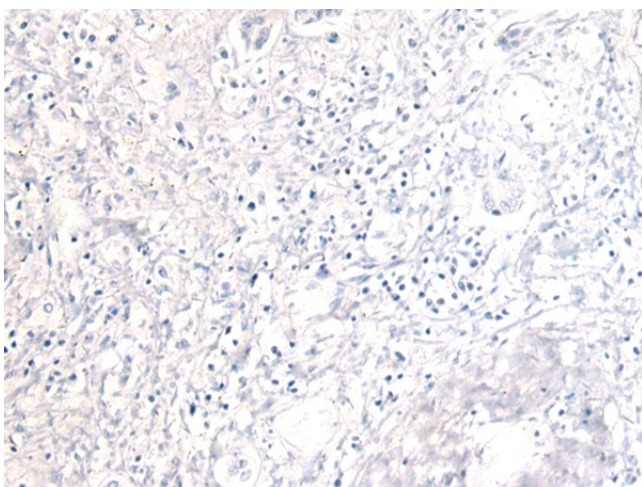
Immunohistochemistry of paraffin-embedded Human esophagus cancer tissue using TA351045 (NCR1 Antibody) at dilution 1/50 (Original magnification: ×200)



Immunohistochemistry of paraffin-embedded Human esophagus cancer tissue using TA351045 (NCR1 Antibody) at dilution 1/50, treated with synthetic peptide. (Original magnification: ×200)



Immunohistochemistry of paraffin-embedded Human liver cancer tissue using TA351045 (NCR1 Antibody) at dilution 1/50 (Original magnification: ×200)



Immunohistochemistry of paraffin-embedded Human liver cancer tissue using TA351045 (NCR1 Antibody) at dilution 1/50, treated with synthetic peptide. (Original magnification: ×200)