

Product datasheet for **TA351042S**

CD2AP Rabbit Polyclonal Antibody

Product data:

Product Type:	Primary Antibodies
Applications:	IHC, WB
Recommended Dilution:	WB: 1000-5000 WB positive control: A431 and Raji cells IHC: 100-300 Positive control: Human Lymphoma Predicted cell location: Cytoplasm
Reactivity:	Human
Host:	Rabbit
Isotype:	IgG
Clonality:	Polyclonal
Immunogen:	Synthetic peptide of human CD2AP
Formulation:	pH7.4 PBS, 0.05% NaN ₃ , 40% Glycerol
Purification:	Antigen affinity purification
Conjugation:	Unconjugated
Storage:	Store at -20°C as received.
Stability:	Stable for 12 months from date of receipt.
Predicted Protein Size:	71 kDa
Gene Name:	CD2-associated protein
Database Link:	NP_036252 Entrez Gene 23607 Human Q9Y5K6



[View online »](#)

Background:

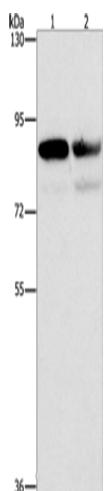
This gene encodes a scaffolding molecule that regulates the actin cytoskeleton. The protein directly interacts with filamentous actin and a variety of cell membrane proteins through multiple actin binding sites, SH3 domains, and a proline-rich region containing binding sites for SH3 domains. The cytoplasmic protein localizes to membrane ruffles, lipid rafts, and the leading edges of cells. It is implicated in dynamic actin remodeling and membrane trafficking that occurs during receptor endocytosis and cytokinesis. Haploinsufficiency of this gene is implicated in susceptibility to glomerular disease.

Synonyms:

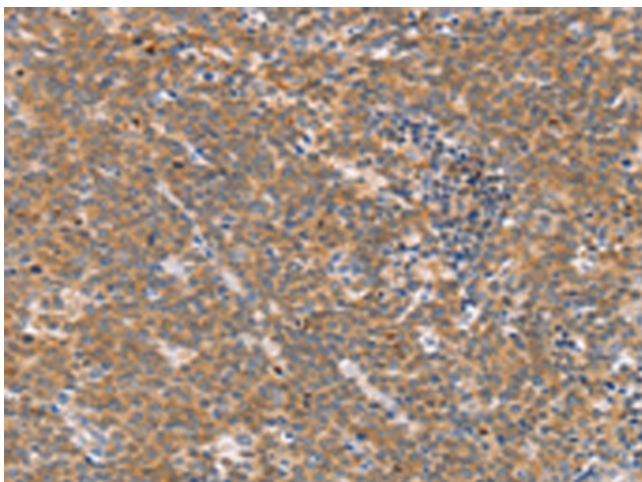
CMS

Protein Families:

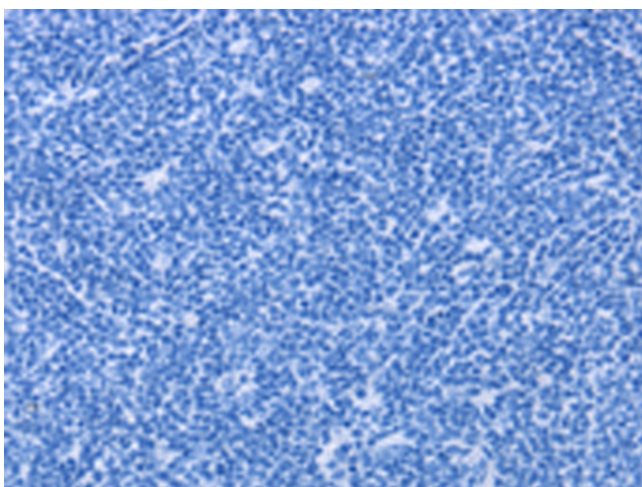
Druggable Genome

Product images:

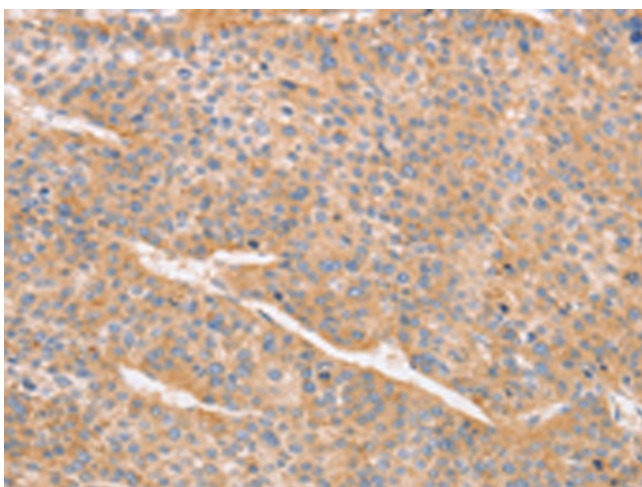
Gel: 6%SDS-PAGE
Lysate: 40 µg
Lane 1-2: A431 cells
Raji cells
Primary antibody: [TA351042] (CD2AP Antibody)
at dilution 1/1000
Secondary antibody: Goat anti rabbit IgG at
1/8000 dilution
Exposure time: 1 second



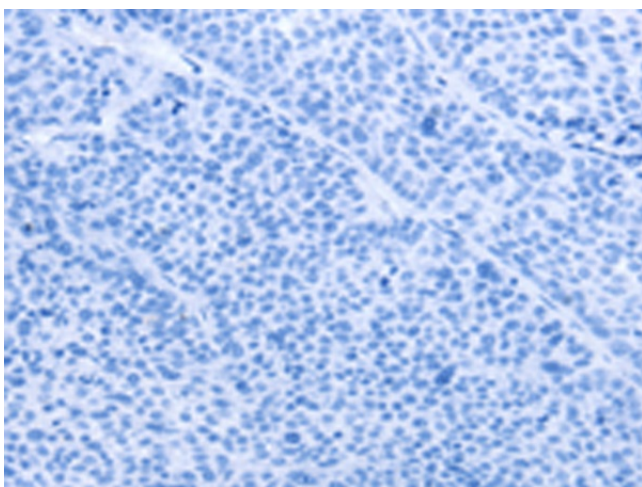
Immunohistochemistry of paraffin-embedded
Human Lymphoma tissue using [TA351042]
(CD2AP Antibody) at dilution 1/70 (Original
magnification: ×200)



Immunohistochemistry of paraffin-embedded Human Lymphoma tissue using [TA351042] (CD2AP Antibody) at dilution 1/70, treated with synthetic peptide. (Original magnification: $\times 200$)



Immunohistochemistry of paraffin-embedded Human liver cancer tissue using [TA351042] (CD2AP Antibody) at dilution 1/70 (Original magnification: $\times 200$)



Immunohistochemistry of paraffin-embedded Human liver cancer tissue using [TA351042] (CD2AP Antibody) at dilution 1/70, treated with synthetic peptide. (Original magnification: $\times 200$)