

Product datasheet for **TA351041**

CD24 Rabbit Polyclonal Antibody

Product data:

Product Type:	Primary Antibodies
Applications:	IHC, WB
Recommended Dilution:	WB: 200-1000 WB positive control: Raji and LOVO cell lysates IHC: 50-100 Positive control: Human colorectal cancer Predicted cell location: Cytoplasm
Reactivity:	Human
Host:	Rabbit
Isotype:	IgG
Clonality:	Polyclonal
Immunogen:	Synthetic peptide of human CD24
Formulation:	pH7.4 PBS, 0.05% NaN ₃ , 40% Glycerol
Concentration:	lot specific
Purification:	Antigen affinity purification
Conjugation:	Unconjugated
Storage:	Store at -20°C as received.
Stability:	Stable for 12 months from date of receipt.
Gene Name:	CD24 molecule
Database Link:	NP_037362 Entrez Gene 100133941 Human P25063

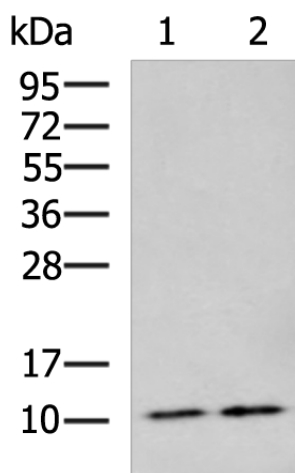
Background: This gene encodes a sialoglycoprotein that is expressed on mature granulocytes and in many B cells. The encoded protein is anchored via a glycosyl phosphatidylinositol (GPI) link to the cell surface. Modulates B-cell activation responses. Signaling could be triggered by the binding of a lectin-like ligand to the CD24 carbohydrates, and transduced by the release of second messengers derived from the GPI-anchor. Promotes AG-dependent proliferation of B-cells, and prevents their terminal differentiation into antibody-forming cells.



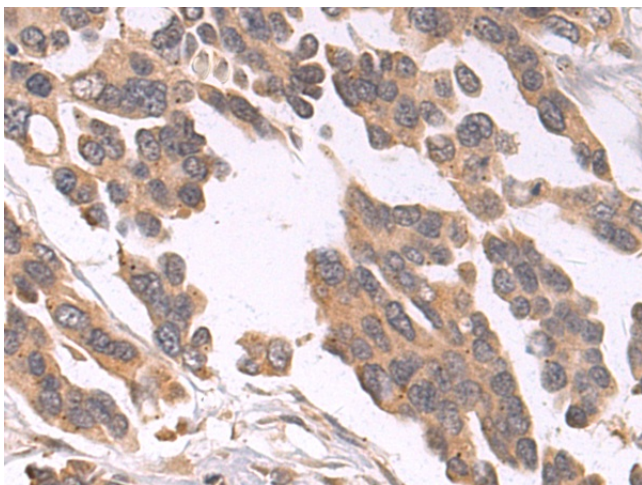
[View online »](#)

Synonyms: CD24A

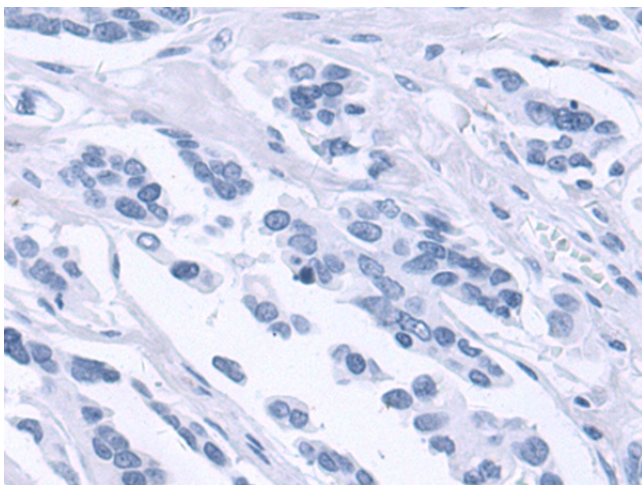
Product images:



Gel: 12%SDS-PAGE
Lysate: 40 µg
Lane 1-2: Raji and LOVO cell lysates
Primary antibody: TA351041 (CD24 Antibody) at dilution 1/400
Secondary antibody: Goat anti rabbit IgG at 1/5000 dilution
Exposure time: 5 minutes



Immunohistochemistry of paraffin-embedded Human colorectal cancer tissue using TA351041 (CD24 Antibody) at dilution 1/50 (Original magnification: ×200)



Immunohistochemistry of paraffin-embedded Human colorectal cancer tissue using TA351041 (CD24 Antibody) at dilution 1/50, treated with synthetic peptide. (Original magnification: $\times 200$)