

## Product datasheet for **TA351037S**

### LEC (CCL16) Rabbit Polyclonal Antibody

#### Product data:

Product Type:	Primary Antibodies
Applications:	IHC, WB
Recommended Dilution:	WB: 500-2000 WB positive control: HepG2 cells IHC: 50-200 Positive control: Human Lymphoma Predicted cell location: Cytoplasm
Reactivity:	Human
Host:	Rabbit
Isotype:	IgG
Clonality:	Polyclonal
Immunogen:	Synthetic peptide of human CCL16
Formulation:	pH7.4 PBS, 0.05% NaN <sub>3</sub> , 40% Glycerol
Purification:	Antigen affinity purification
Conjugation:	Unconjugated
Storage:	Store at -20°C as received.
Stability:	Stable for 12 months from date of receipt.
Predicted Protein Size:	14 kDa
Gene Name:	C-C motif chemokine ligand 16
Database Link:	<a href="#">NP_004581</a> <a href="#">Entrez Gene 6360 Human</a> <a href="#">O15467</a>



[View online »](#)

**Background:**

This gene is one of several cytokine genes clustered on the q-arm of chromosome 17. Cytokines are a family of secreted proteins involved in immunoregulatory and inflammatory processes. The CC cytokines are proteins characterized by two adjacent cysteines. The cytokine encoded by this gene displays chemotactic activity for lymphocytes and monocytes but not for neutrophils. This cytokine also shows a potent myelosuppressive activity and suppresses proliferation of myeloid progenitor cells. The expression of this gene is upregulated by IL-10.

**Synonyms:**

CKb12; HCC-4; ILINCK; LCC-1; LEC; LMC; Mtn-1; NCC-4; NCC4; SCYA16; SCYL4

**Protein Families:**

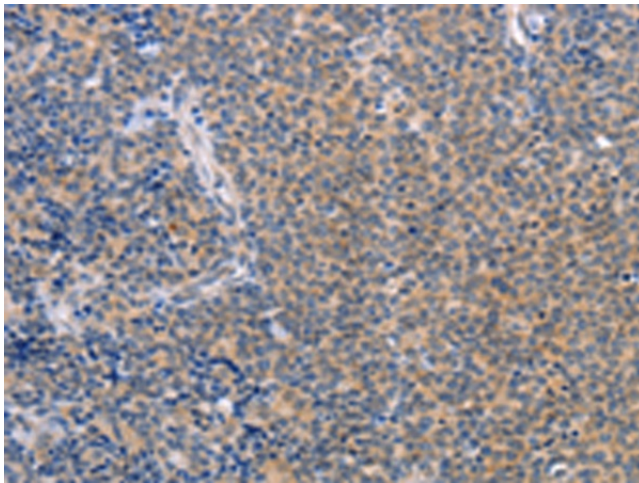
Druggable Genome, Secreted Protein

**Protein Pathways:**

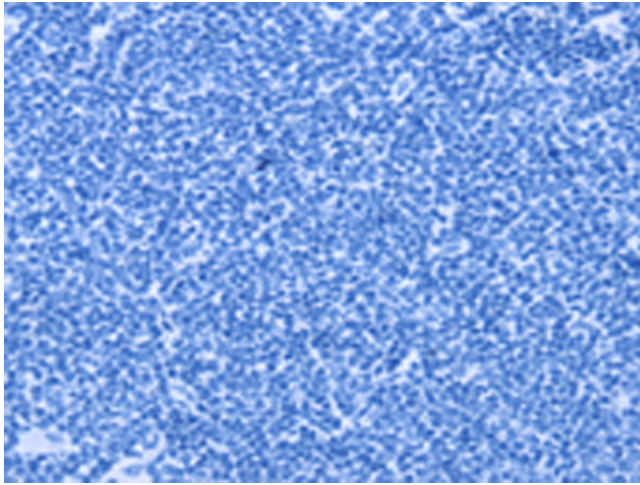
Chemokine signaling pathway, Cytokine-cytokine receptor interaction

**Product images:**

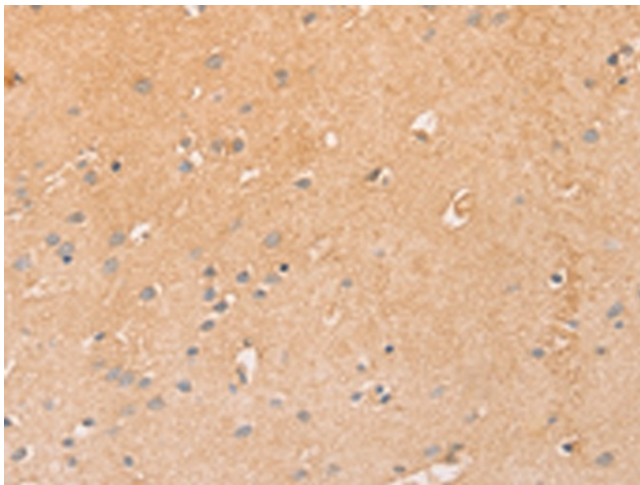

Gel: 15%SDS-PAGE  
 Lysate: 40 µg  
 Lane: HepG2 cells  
 Primary antibody: [TA351037] (CCL16 Antibody) at dilution 1/760  
 Secondary antibody: Goat anti rabbit IgG at 1/8000 dilution  
 Exposure time: 3 seconds



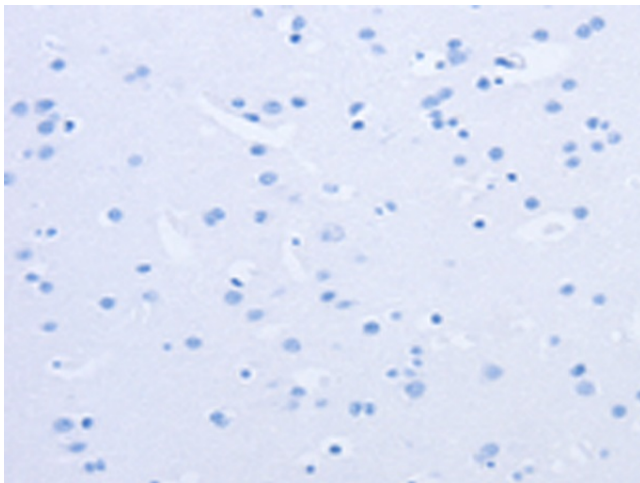
Immunohistochemistry of paraffin-embedded Human Lymphoma tissue using [TA351037] (CCL16 Antibody) at dilution 1/50 (Original magnification: ×200)



Immunohistochemistry of paraffin-embedded Human Lymphoma tissue using [TA351037] (CCL16 Antibody) at dilution 1/50, treated with synthetic peptide. (Original magnification:  $\times 200$ )



Immunohistochemistry of paraffin-embedded Human brain tissue using [TA351037] (CCL16 Antibody) at dilution 1/50 (Original magnification:  $\times 200$ )



Immunohistochemistry of paraffin-embedded Human brain tissue using [TA351037] (CCL16 Antibody) at dilution 1/50, treated with synthetic peptide. (Original magnification:  $\times 200$ )