

Product datasheet for **TA351035**

STK3 Rabbit Polyclonal Antibody

Product data:

Product Type:	Primary Antibodies
Applications:	IHC, WB
Recommended Dilution:	WB: 500-2000 WB positive control: PC3 and hela cells, human bladder carcinoma tissue and A172 cells, hepG2 cells IHC: 100-300 Positive control: Human Lymphoma Predicted cell location: Cytoplasm
Reactivity:	Human, Mouse
Host:	Rabbit
Isotype:	IgG
Clonality:	Polyclonal
Immunogen:	Synthetic peptide of human STK3/STK4
Formulation:	pH7.4 PBS, 0.05% NaN ₃ , 40% Glycerol
Concentration:	lot specific
Purification:	Antigen affinity purification
Conjugation:	Unconjugated
Storage:	Store at -20°C as received.
Stability:	Stable for 12 months from date of receipt.
Predicted Protein Size:	56 kDa
Gene Name:	serine/threonine kinase 3
Database Link:	NP_006272 Entrez Gene 56274 Mouse Entrez Gene 6788 Human Q13188



[View online »](#)

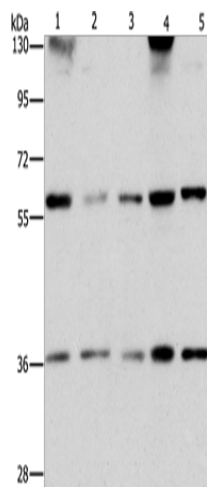
Background: Sterile-20 (Ste20) is a serine/threonine kinase in *Saccharomyces cerevisiae* that is involved in relaying signals from G protein-coupled receptors to cyto-solic MAP kinase cascades. Mammalian protein kinases that display sequence similarity to Ste20 are divided into two groups, the PAK subfamily and the GCK subfamily. The mammalian Ste20-like kinases (MST kinases), also known as Krs proteins, are members of the GCK subfamily. Ksr-1 (MST-2) and Ksr-2 (MST-1) are both direct substrates of caspase-3 that accelerate caspase-3 activation.

Synonyms: KRS1; MST2

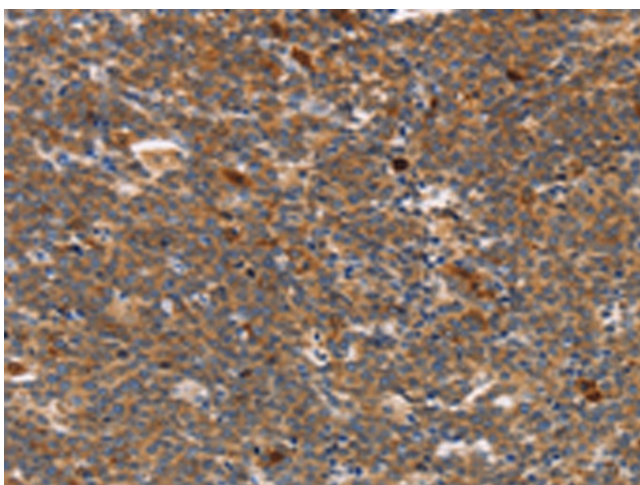
Protein Families: Druggable Genome, Protein Kinase

Protein Pathways: MAPK signaling pathway

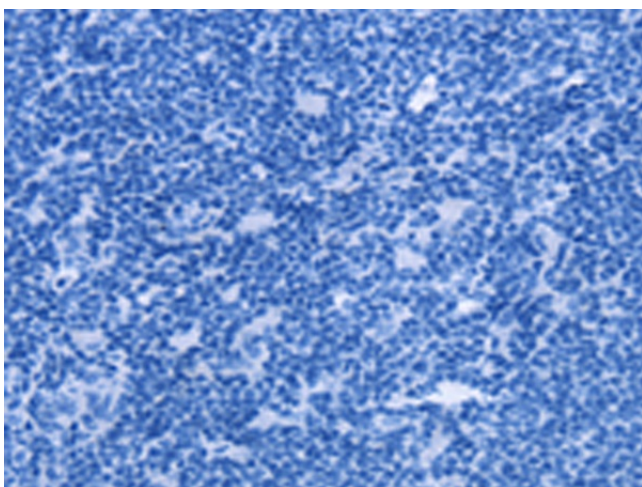
Product images:



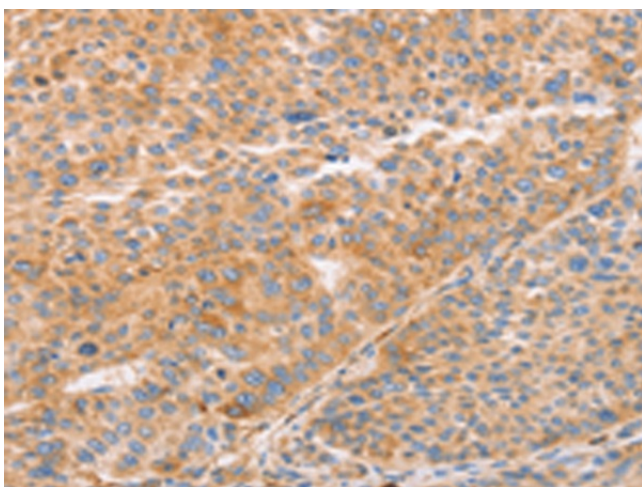
Gel: 6%SDS-PAGE
Lysate: 40 µg
Lane 1-5: PC3 cells
hela cells
human bladder carcinoma tissue
A172 cells
hepG2 cells
Primary antibody: TA351035 (STK3/STK4 Antibody) at dilution 1/1000
Secondary antibody: Goat anti rabbit IgG at 1/8000 dilution
Exposure time: 10 seconds



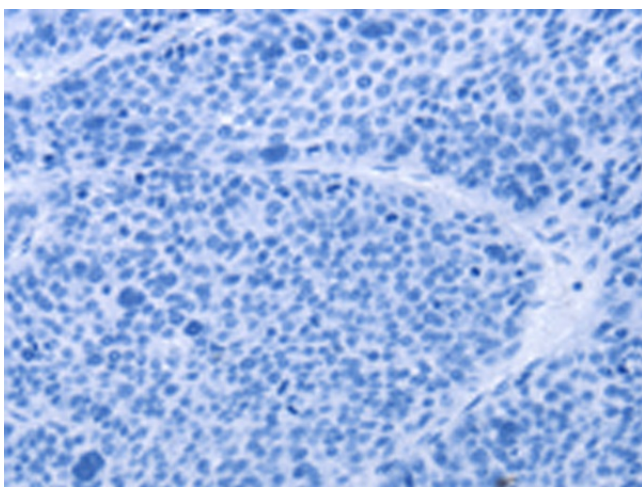
Immunohistochemistry of paraffin-embedded Human Lymphoma tissue using TA351035 (STK3/STK4 Antibody) at dilution 1/70 (Original magnification: ×200)



Immunohistochemistry of paraffin-embedded Human Lymphoma tissue using TA351035 (STK3/STK4 Antibody) at dilution 1/70, treated with synthetic peptide. (Original magnification: ×200)



Immunohistochemistry of paraffin-embedded Human liver cancer tissue using TA351035 (STK3/STK4 Antibody) at dilution 1/70 (Original magnification: ×200)



Immunohistochemistry of paraffin-embedded Human liver cancer tissue using TA351035 (STK3/STK4 Antibody) at dilution 1/70, treated with synthetic peptide. (Original magnification: ×200)