

## Product datasheet for **TA351029**

### NCAPG2 Rabbit Polyclonal Antibody

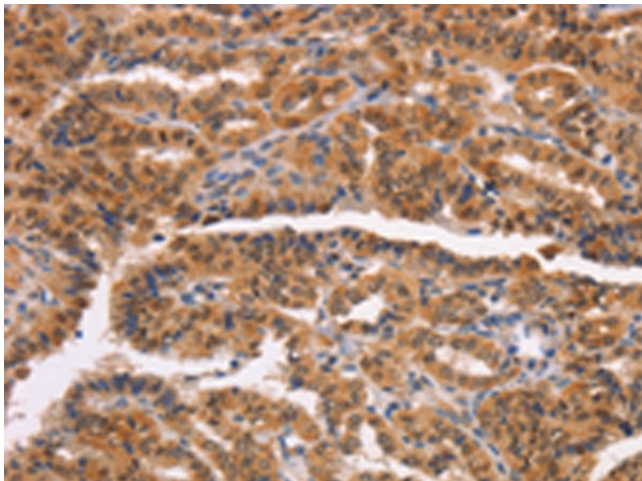
#### Product data:

Product Type:	Primary Antibodies
Applications:	IHC
Recommended Dilution:	IHC: 50-200 Positive control: Human thyroid cancer Predicted cell location: Nucleus
Reactivity:	Human
Host:	Rabbit
Isotype:	IgG
Clonality:	Polyclonal
Immunogen:	Synthetic peptide of human NCAPG2
Formulation:	pH7.4 PBS, 0.05% NaN <sub>3</sub> , 40% Glycerol
Concentration:	lot specific
Purification:	Antigen affinity purification
Conjugation:	Unconjugated
Storage:	Store at -20°C as received.
Stability:	Stable for 12 months from date of receipt.
Gene Name:	non-SMC condensin II complex subunit G2
Database Link:	<a href="#">NP_060230</a> <a href="#">Entrez Gene 54892 Human</a> <a href="#">Q86XI2</a>
Background:	This gene encodes a protein that belongs to the Condensin2nSMC family of proteins. The encoded protein is a regulatory subunit of the condensin II complex which, along with the condensin I complex, plays a role in chromosome assembly and segregation during mitosis. A similar protein in mouse is required for early development of the embryo. Alternate splicing results in multiple transcript variants.
Synonyms:	CAP-G2; CAPG2; hCAP-G2; LUZP5; MTB

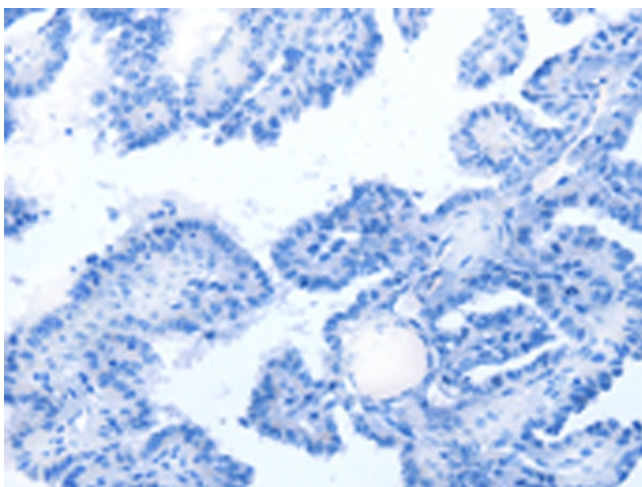


[View online »](#)

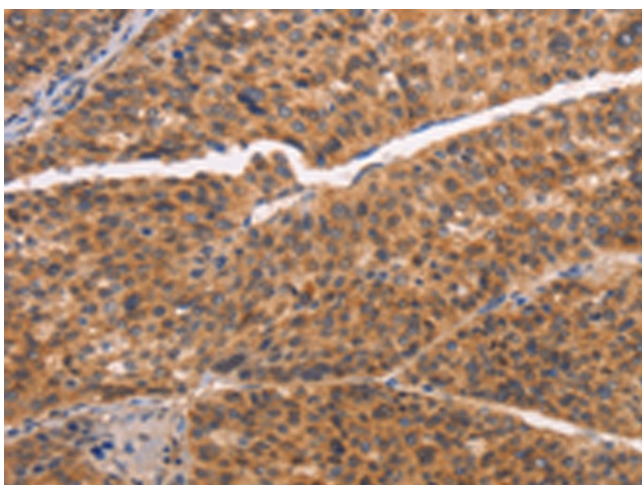
## Product images:



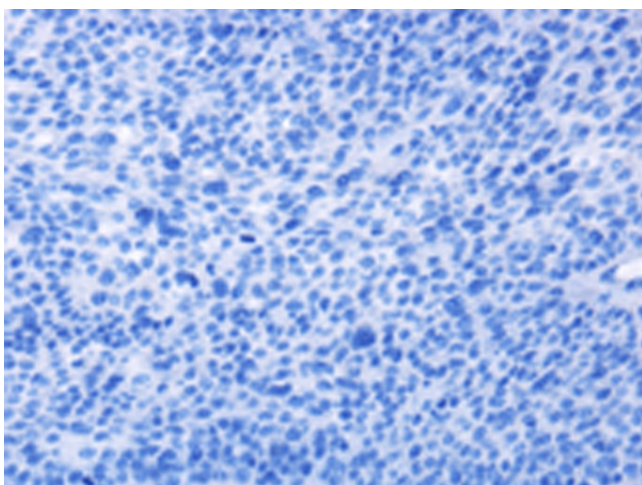
Immunohistochemistry of paraffin-embedded Human thyroid cancer tissue using TA351029 (NCAPG2 Antibody) at dilution 1/50 (Original magnification: ×200)



Immunohistochemistry of paraffin-embedded Human thyroid cancer tissue using TA351029 (NCAPG2 Antibody) at dilution 1/50, treated with synthetic peptide. (Original magnification: ×200)



Immunohistochemistry of paraffin-embedded Human liver cancer tissue using TA351029 (NCAPG2 Antibody) at dilution 1/50 (Original magnification:  $\times 200$ )



Immunohistochemistry of paraffin-embedded Human liver cancer tissue using TA351029 (NCAPG2 Antibody) at dilution 1/50, treated with synthetic peptide. (Original magnification:  $\times 200$ )