

Product datasheet for **TA351028**

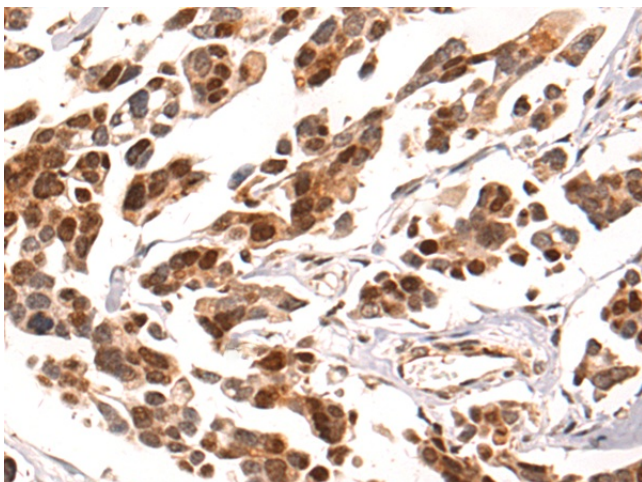
CAMTA1 Rabbit Polyclonal Antibody

Product data:

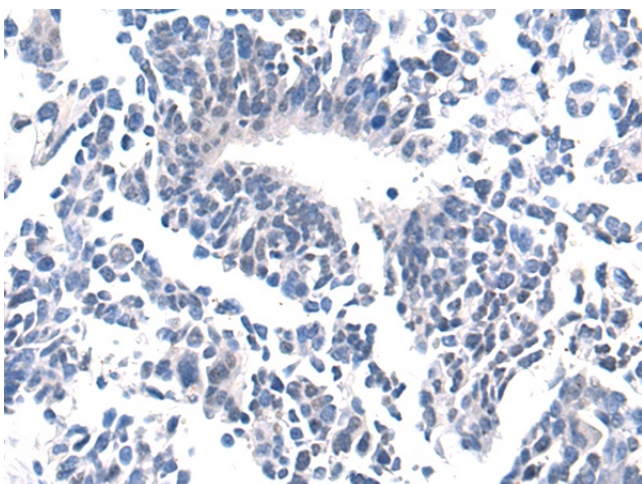
Product Type:	Primary Antibodies
Applications:	IHC
Recommended Dilution:	IHC: 100-300 Positive control: Human colorectal cancer Predicted cell location: Nucleus
Reactivity:	Human, Mouse
Host:	Rabbit
Isotype:	IgG
Clonality:	Polyclonal
Immunogen:	Synthetic peptide of human CAMTA1
Formulation:	pH7.4 PBS, 0.05% NaN ₃ , 40% Glycerol
Concentration:	lot specific
Purification:	Antigen affinity purification
Conjugation:	Unconjugated
Storage:	Store at -20°C as received.
Stability:	Stable for 12 months from date of receipt.
Gene Name:	calmodulin binding transcription activator 1
Database Link:	NP_056030 Entrez Gene 23261 Human Q9Y6Y1
Background:	Calmodulin-binding transcription activator 1 is a protein that in humans is encoded by the CAMTA1 gene. Normally expressed in non-neoplastic adult central nervous system tissues: detected in whole brain, cerebellum, brain cortex, occipital lobe, frontal lobe, temporal lobe, putamen. Expression levels are low in oligodendroglial tumors, and are reduced by half in oligodendroglioma and astrocytoma cases with 1p loss of heterozygosity. Detected in neuroblastic-type cultured neuroblastoma cells.
Synonyms:	CANPMR
Protein Families:	Transcription Factors



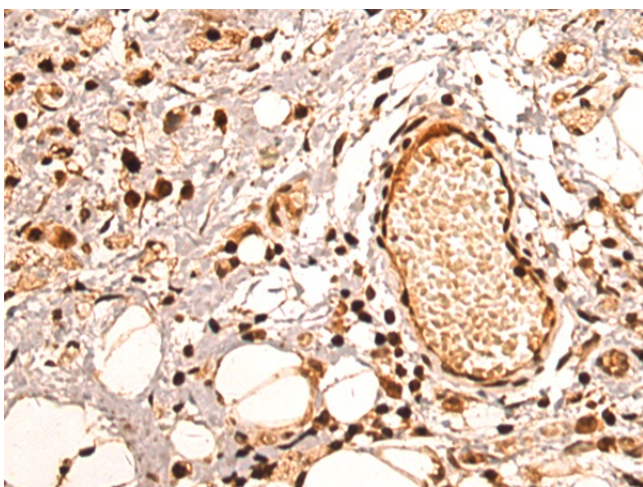
[View online »](#)

Product images:

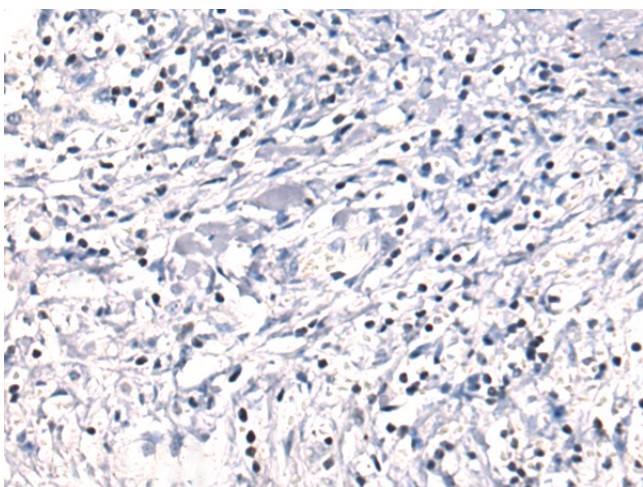
Immunohistochemistry of paraffin-embedded Human colorectal cancer tissue using TA351028 (CAMTA1 Antibody) at dilution 1/50 (Original magnification: $\times 200$)



Immunohistochemistry of paraffin-embedded Human colorectal cancer tissue using TA351028 (CAMTA1 Antibody) at dilution 1/50, treated with synthetic peptide. (Original magnification: $\times 200$)



Immunohistochemistry of paraffin-embedded Human gastric cancer tissue using TA351028 (CAMTA1 Antibody) at dilution 1/50 (Original magnification: $\times 200$)



Immunohistochemistry of paraffin-embedded Human gastric cancer tissue using TA351028 (CAMTA1 Antibody) at dilution 1/50, treated with synthetic peptide. (Original magnification: $\times 200$)