

Product datasheet for **TA351026**

CAGE1 Rabbit Polyclonal Antibody

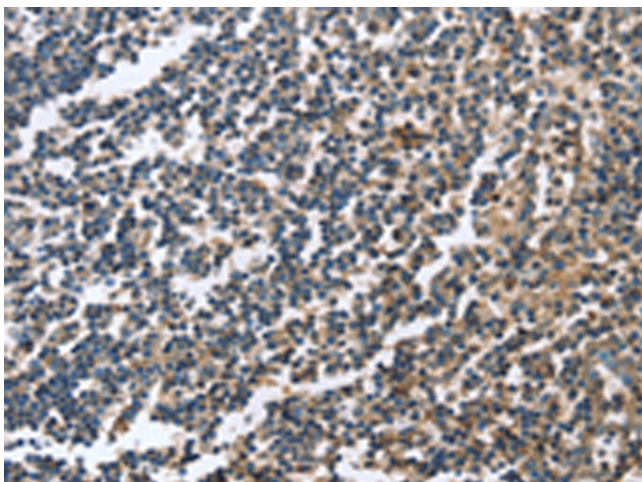
Product data:

| | |
|-----------------------|---|
| Product Type: | Primary Antibodies |
| Applications: | IHC |
| Recommended Dilution: | IHC: 25-100 Positive control: Human tonsil Predicted cell location: Cytoplasm |
| Reactivity: | Human |
| Host: | Rabbit |
| Isotype: | IgG |
| Clonality: | Polyclonal |
| Immunogen: | Synthetic peptide of human CAGE1 |
| Formulation: | pH7.4 PBS, 0.05% NaN ₃ , 40% Glycerol |
| Concentration: | lot specific |
| Purification: | Antigen affinity purification |
| Conjugation: | Unconjugated |
| Storage: | Store at -20°C as received. |
| Stability: | Stable for 12 months from date of receipt. |
| Gene Name: | cancer antigen 1 |
| Database Link: | NP_995586 Entrez Gene 285782 Human Q8TC20 |
| Background: | CAGE1, also known as CT3; CT95; CTAG3; bA69L16.7, is a 639-amino acid protein. It shares 76% sequence identity with a monkey homolog. RT-PCR analysis detected testis-specific expression among normal tissues and wide expression among various cancer tissues and cancer cell lines including those from cervical, melanoma, hepatic, renal, myeloma, and breast cancers. CTAG3 was overexpressed in cancer tissues compared with surrounding noncancerous tissues. Transfection experiments with a GFP-CTAG3 construct indicated a predominantly nuclear localization. |
| Synonyms: | bA69L16.7; CT3; CT95; CTAG3 |

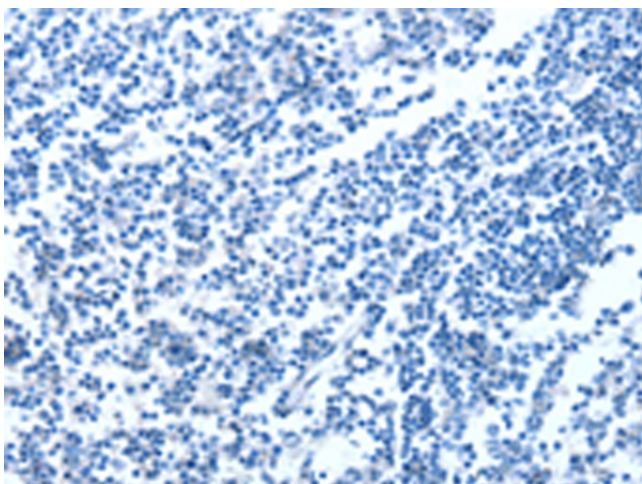


[View online »](#)

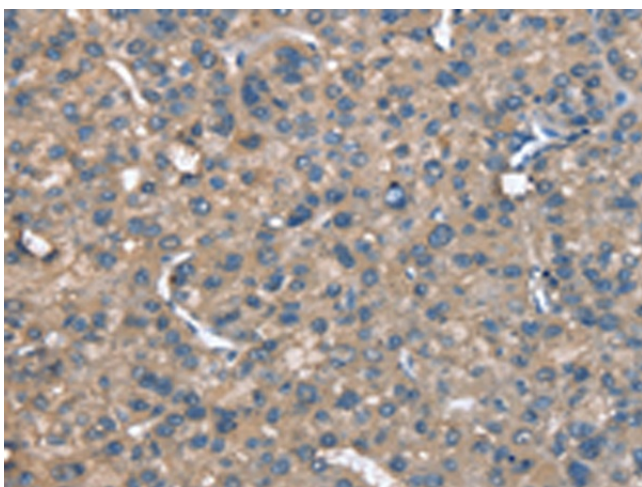
Product images:



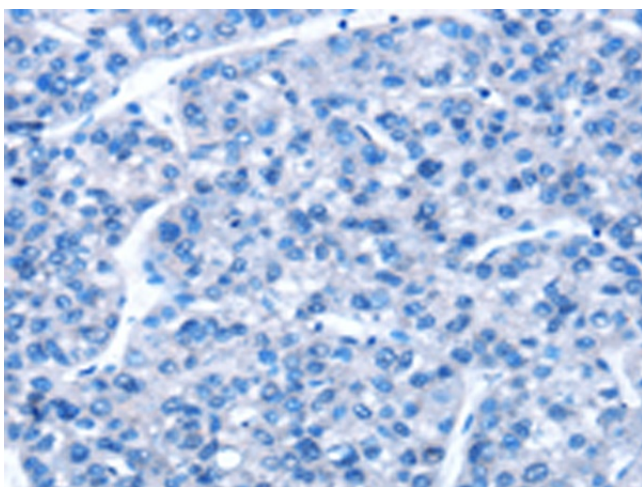
Immunohistochemistry of paraffin-embedded Human tonsil tissue using TA351026 (CAGE1 Antibody) at dilution 1/20 (Original magnification: ×200)



Immunohistochemistry of paraffin-embedded Human tonsil tissue using TA351026 (CAGE1 Antibody) at dilution 1/20, treated with synthetic peptide. (Original magnification: ×200)



Immunohistochemistry of paraffin-embedded Human liver cancer tissue using TA351026 (CAGE1 Antibody) at dilution 1/20 (Original magnification: ×200)



Immunohistochemistry of paraffin-embedded Human liver cancer tissue using TA351026 (CAGE1 Antibody) at dilution 1/20, treated with synthetic peptide. (Original magnification: ×200)