

Product datasheet for **TA351025**

Cell adhesion molecule 4 (CADM4) Rabbit Polyclonal Antibody

Product data:

Product Type:	Primary Antibodies
Applications:	IHC, WB
Recommended Dilution:	WB: 200-1000 WB positive control: RAW264.7 cells and mouse brain tissue IHC: 25-100 Positive control: Human liver cancer Predicted cell location: Cytoplasm
Reactivity:	Human, Mouse, Rat
Host:	Rabbit
Isotype:	IgG
Clonality:	Polyclonal
Immunogen:	Synthetic peptide of human CADM4
Formulation:	pH7.4 PBS, 0.05% NaN ₃ , 40% Glycerol
Concentration:	lot specific
Purification:	Antigen affinity purification
Conjugation:	Unconjugated
Storage:	Store at -20°C as received.
Stability:	Stable for 12 months from date of receipt.
Predicted Protein Size:	43 kDa
Gene Name:	cell adhesion molecule 4
Database Link:	NP_660339 Entrez Gene 260299 Mouse Entrez Gene 365216 Rat Entrez Gene 199731 Human Q8NFZ8



[View online »](#)

Background:

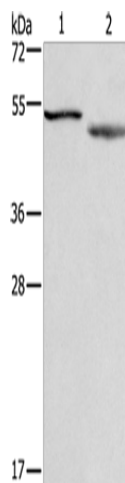
IGSF4C (immunoglobulin superfamily member 4C), also known as CADM4 (cell adhesion molecule 4), NECL4 or TSLL2, is a 388 amino acid single-pass type I membrane protein that contains one Ig-like V-type domain and two Ig-like C2-type domains. Expressed in kidney, brain and prostate, IGSF4C exists as both a monomer and a homodimer and is thought to be involved in cell-cell adhesion, possibly playing a role in tumor suppression. Human IGSF4C shares 98% sequence identity with its mouse counterpart, suggesting a conserved role between species. The gene encoding IGSF4C maps to human chromosome 19, which is the genetic home for a number of immunoglobulin superfamily members, including the killer cell and leukocyte Ig-like receptors, a number of ICAMs, the CEACAM and PSG family and Fc receptors (FcRs)

Synonyms:

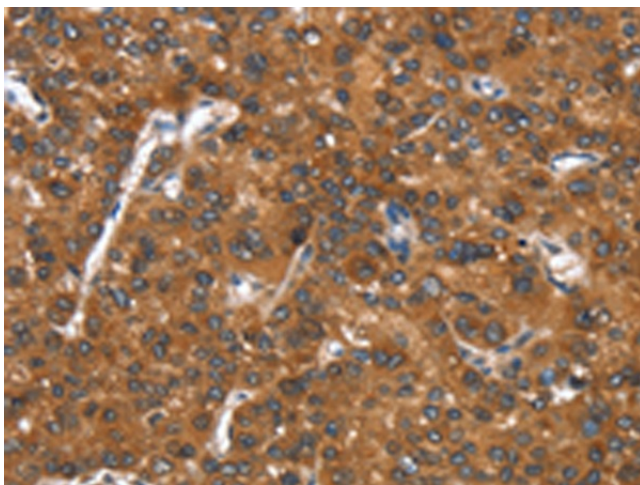
IGSF4C; Necl-4; NECL4; synCAM4; TSLL2

Protein Families:

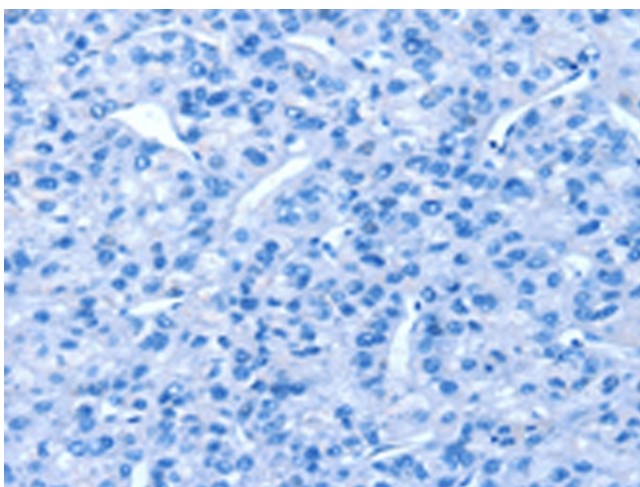
Transmembrane

Product images:

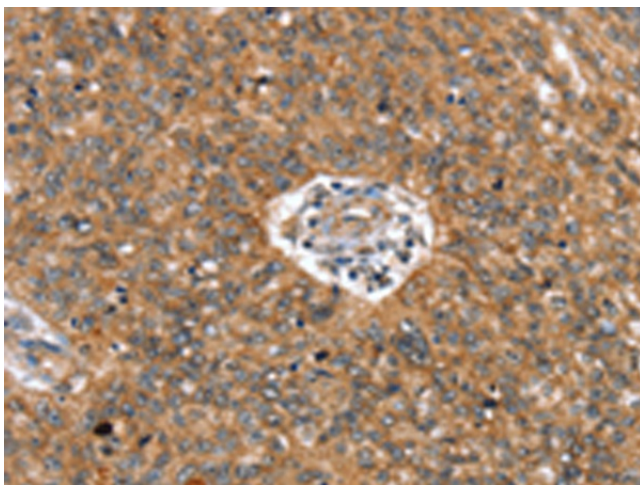
Gel: 10%SDS-PAGE
Lysate: 40 µg
Lane 1-2: RAW264.7 cells
mouse brain tissue
Primary antibody: TA351025 (CADM4 Antibody) at
dilution 1/300
Secondary antibody: Goat anti rabbit IgG at
1/8000 dilution
Exposure time: 20 seconds



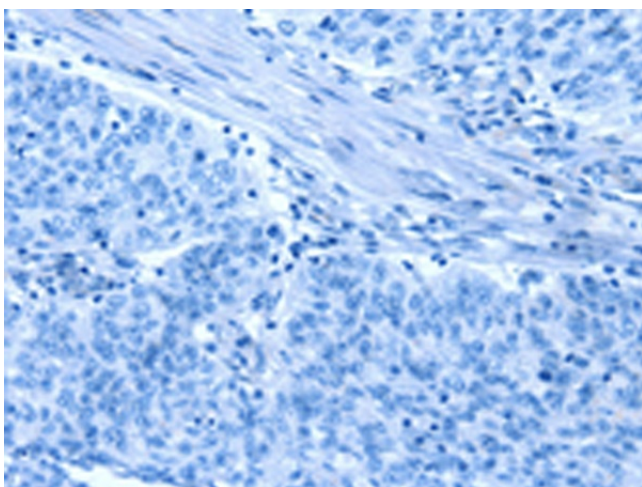
Immunohistochemistry of paraffin-embedded Human liver cancer tissue using TA351025 (CADM4 Antibody) at dilution 1/25 (Original magnification: $\times 200$)



Immunohistochemistry of paraffin-embedded Human liver cancer tissue using TA351025 (CADM4 Antibody) at dilution 1/25, treated with synthetic peptide. (Original magnification: $\times 200$)



Immunohistochemistry of paraffin-embedded Human ovarian cancer tissue using TA351025 (CADM4 Antibody) at dilution 1/25 (Original magnification: $\times 200$)



Immunohistochemistry of paraffin-embedded Human ovarian cancer tissue using TA351025 (CADM4 Antibody) at dilution 1/25, treated with synthetic peptide. (Original magnification: ×200)