

## Product datasheet for **TA351021S**

### CACNA1E Rabbit Polyclonal Antibody

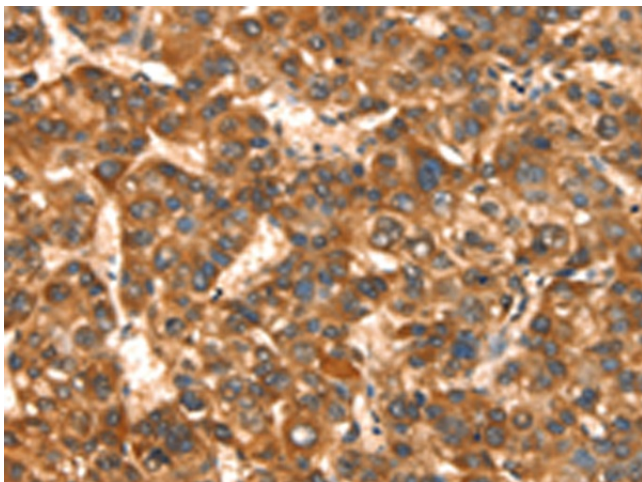
#### Product data:

Product Type:	Primary Antibodies
Applications:	IHC
Recommended Dilution:	IHC: 25-100 Positive control: Human liver cancer Predicted cell location: Cytoplasm
Reactivity:	Human, Mouse, Rat
Host:	Rabbit
Isotype:	IgG
Clonality:	Polyclonal
Immunogen:	Synthetic peptide of human CACNA1E
Formulation:	pH7.4 PBS, 0.05% NaN <sub>3</sub> , 40% Glycerol
Purification:	Antigen affinity purification
Conjugation:	Unconjugated
Storage:	Store at -20°C as received.
Stability:	Stable for 12 months from date of receipt.
Gene Name:	calcium voltage-gated channel subunit alpha1 E
Database Link:	<a href="#">NP_000712</a> <a href="#">Entrez Gene 12290 Mouse</a> <a href="#">Entrez Gene 54234 Rat</a> <a href="#">Entrez Gene 777 Human</a> <a href="#">Q15878</a>
Background:	Voltage-dependent calcium channels are multisubunit complexes consisting of alpha-1, alpha-2, beta, and delta subunits in a 1:1:1:1 ratio. These channels mediate the entry of calcium ions into excitable cells, and are also involved in a variety of calcium-dependent processes, including muscle contraction, hormone or neurotransmitter release, gene expression, cell motility, cell division and cell death. This gene encodes the alpha-1E subunit of the R-type calcium channels, which belong to the 'high-voltage activated' group that maybe involved in the modulation of firing patterns of neurons important for information processing. Alternatively spliced transcript variants encoding different isoforms have been described for this gene

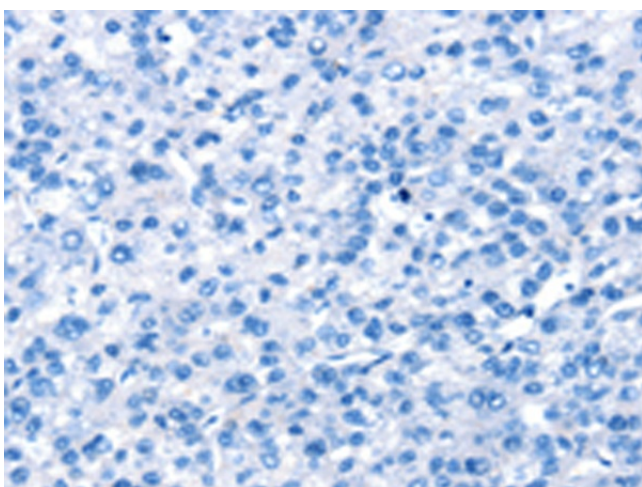


[View online »](#)

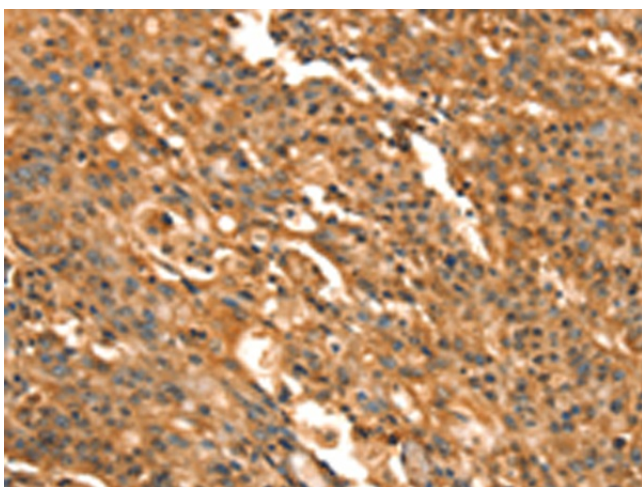
**Synonyms:** BII; CACH6; CACNL1A6; Cav2.3; gm139  
**Protein Families:** Druggable Genome, Ion Channels: Calcium, Transmembrane  
**Protein Pathways:** Calcium signaling pathway, MAPK signaling pathway, Type II diabetes mellitus

**Product images:**

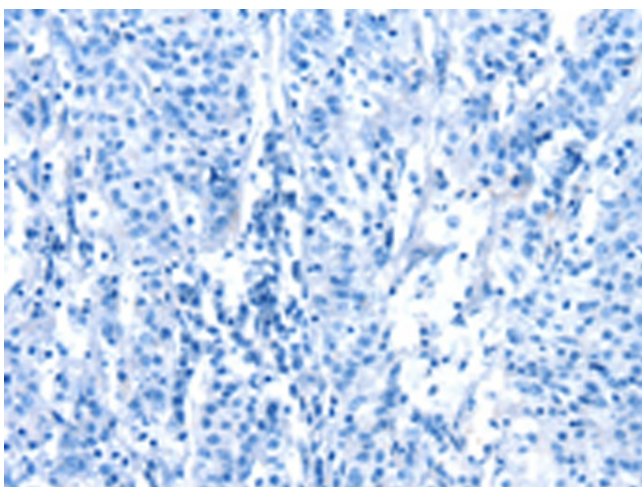
Immunohistochemistry of paraffin-embedded Human liver cancer tissue using [TA351021] (CACNA1E Antibody) at dilution 1/15 (Original magnification:  $\times 200$ )



Immunohistochemistry of paraffin-embedded Human liver cancer tissue using [TA351021] (CACNA1E Antibody) at dilution 1/15, treated with synthetic peptide. (Original magnification:  $\times 200$ )



Immunohistochemistry of paraffin-embedded Human gastric cancer tissue using [TA351021] (CACNA1E Antibody) at dilution 1/15 (Original magnification:  $\times 200$ )



Immunohistochemistry of paraffin-embedded Human gastric cancer tissue using [TA351021] (CACNA1E Antibody) at dilution 1/15, treated with synthetic peptide. (Original magnification:  $\times 200$ )