

Product datasheet for **TA351018**

CABLES2 Rabbit Polyclonal Antibody

Product data:

Product Type:	Primary Antibodies
Applications:	IHC
Recommended Dilution:	IHC: 25-100 Positive control: Human thyroid cancer Predicted cell location: Cytoplasm
Reactivity:	Human, Mouse
Host:	Rabbit
Isotype:	IgG
Clonality:	Polyclonal
Immunogen:	Synthetic peptide of human CABLES2
Formulation:	pH7.4 PBS, 0.05% NaN ₃ , 40% Glycerol
Concentration:	lot specific
Purification:	Antigen affinity purification
Conjugation:	Unconjugated
Storage:	Store at -20°C as received.
Stability:	Stable for 12 months from date of receipt.
Gene Name:	Cdk5 and Abl enzyme substrate 2
Database Link:	NP_112492 Entrez Gene 252966 Mouse Entrez Gene 81928 Human Q9BTV7



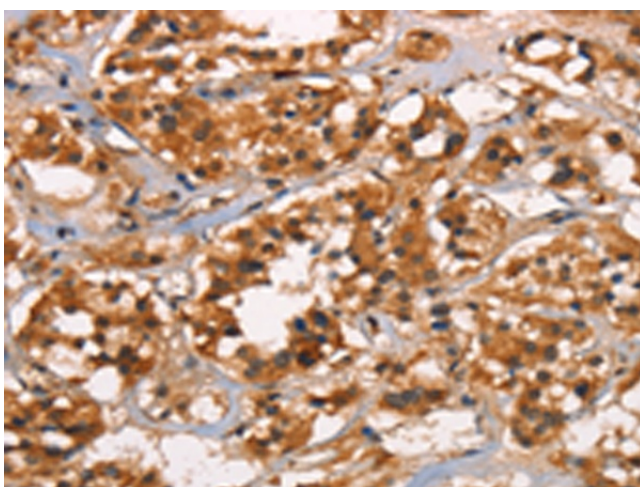
[View online »](#)

Background:

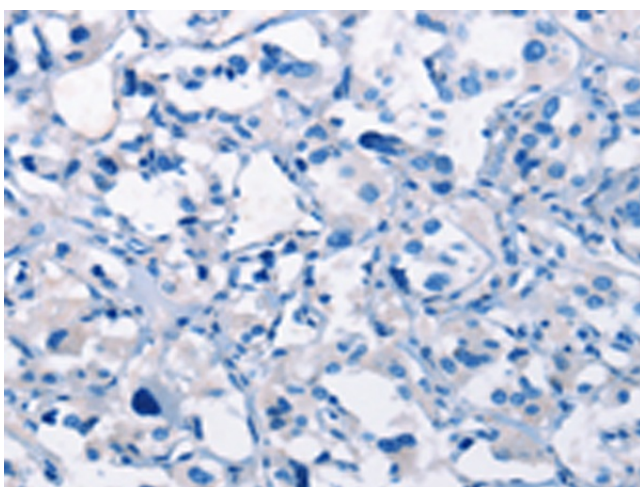
Cables2 (Cdk5 and ABL1 enzyme substrate 2), also known as Ik3-2, is a 478 amino acid ubiquitously expressed protein that has a C-terminal cyclin box-containing domain, making it a member of the cyclin protein superfamily. A related protein, Cables, forms a trimolecular complex with Cdk5 and c-Abl in vivo, enhances apoptosis induced by overexpression of p53 and may be a tumor suppressor, due to its chromosomal loss of heterozygosity that is found in certain cancers. Cables2 shares 78% sequence similarity with Cables in the region of the cyclin box-containing domain and, in similar functionality, associates with Cdk3, Cdk5 and c-Abl. However, unlike its close relative, Cables2 also contains an N-terminal region that enhances not only p53-mediated cell death, but also p53-independent cell death. This characteristic suggests that the gene encoding Cables2 may also function as a tumor suppressor gene.

Synonyms:

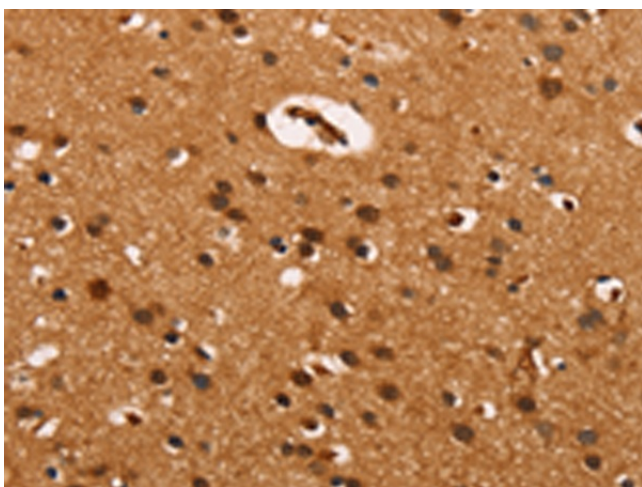
C20orf150; dj908M14.2; ik3-2

Product images:


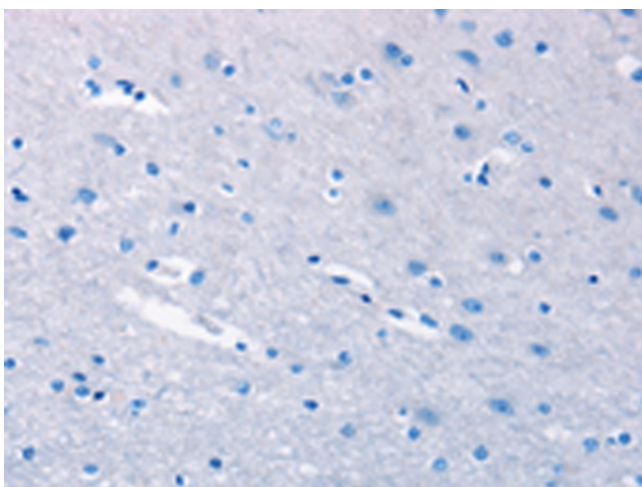
Immunohistochemistry of paraffin-embedded Human thyroid cancer tissue using TA351018 (CABLES2 Antibody) at dilution 1/25 (Original magnification: ×200)



Immunohistochemistry of paraffin-embedded Human thyroid cancer tissue using TA351018 (CABLES2 Antibody) at dilution 1/25, treated with synthetic peptide. (Original magnification: ×200)



Immunohistochemistry of paraffin-embedded Human brain tissue using TA351018 (CABLES2 Antibody) at dilution 1/25 (Original magnification: ×200)



Immunohistochemistry of paraffin-embedded Human brain tissue using TA351018 (CABLES2 Antibody) at dilution 1/25, treated with synthetic peptide. (Original magnification: ×200)