

## Product datasheet for **TA351016S**

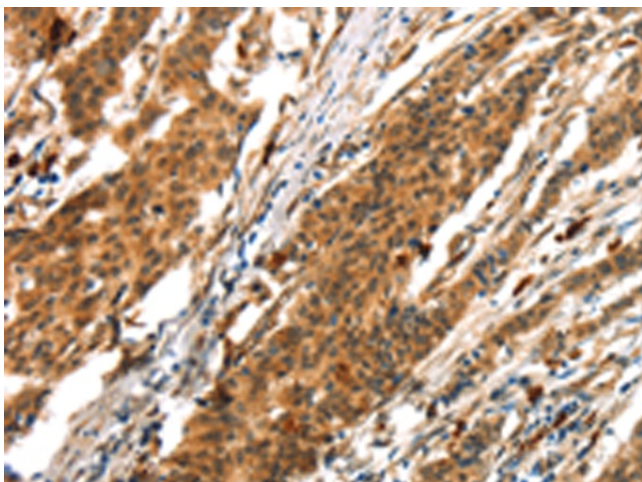
### **BTF (BCLAF1) Rabbit Polyclonal Antibody**

#### **Product data:**

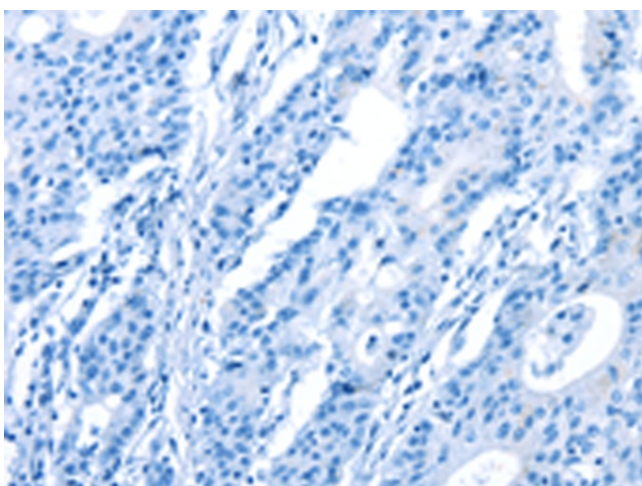
|                              |  |
|------------------------------|--|
| <b>Product Type:</b>         | Primary Antibodies   |
| <b>Applications:</b>         | IHC  |
| <b>Recommended Dilution:</b> | IHC: 25-100<br>Positive control: Human gastric cancer<br>Predicted cell location: Cytoplasm  |
| <b>Reactivity:</b>           | Human, Mouse   |
| <b>Host:</b>                 | Rabbit   |
| <b>Isotype:</b>              | IgG  |
| <b>Clonality:</b>            | Polyclonal   |
| <b>Immunogen:</b>            | Synthetic peptide of human BCLAF1  |
| <b>Formulation:</b>          | pH7.4 PBS, 0.05% NaN <sub>3</sub> , 40% Glycerol   |
| <b>Purification:</b>         | Antigen affinity purification  |
| <b>Conjugation:</b>          | Unconjugated   |
| <b>Storage:</b>              | Store at -20°C as received.  |
| <b>Stability:</b>            | Stable for 12 months from date of receipt.   |
| <b>Gene Name:</b>            | BCL2 associated transcription factor 1   |
| <b>Database Link:</b>        | <a href="#">NP_055554</a><br><a href="#">Entrez Gene 72567 Mouse</a> <a href="#">Entrez Gene 9774 Human</a><br><a href="#">Q9NYF8</a>  |
| <b>Background:</b>           | This gene encodes a transcriptional repressor that interacts with several members of the BCL2 family of proteins. Overexpression of this protein induces apoptosis, which can be suppressed by co-expression of BCL2 proteins. The protein localizes to dot-like structures throughout the nucleus, and redistributes to a zone near the nuclear envelope in cells undergoing apoptosis. Multiple transcript variants encoding different isoforms have been found for this gene. |
| <b>Synonyms:</b>             | bK211L9.1; BTF   |
| <b>Protein Families:</b>     | Transcription Factors  |



[View online »](#)

**Product images:**

Immunohistochemistry of paraffin-embedded Human gastric cancer tissue using [TA351016] (BCLAF1 Antibody) at dilution 1/25 (Original magnification:  $\times 200$ )



Immunohistochemistry of paraffin-embedded Human gastric cancer tissue using [TA351016] (BCLAF1 Antibody) at dilution 1/25, treated with synthetic peptide. (Original magnification:  $\times 200$ )