

## Product datasheet for **TA351016**

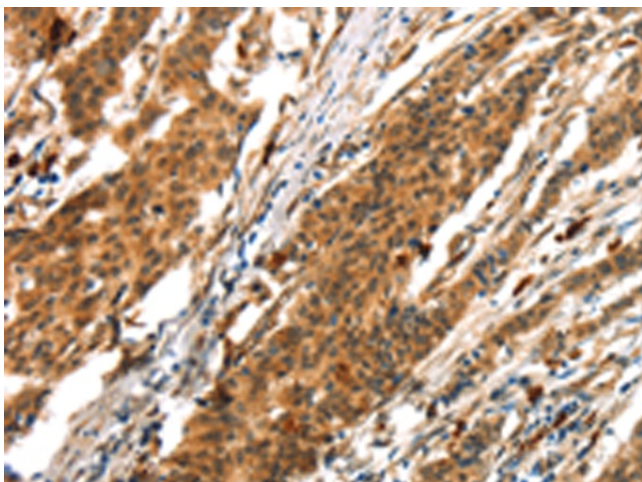
### **BTF (BCLAF1) Rabbit Polyclonal Antibody**

#### **Product data:**

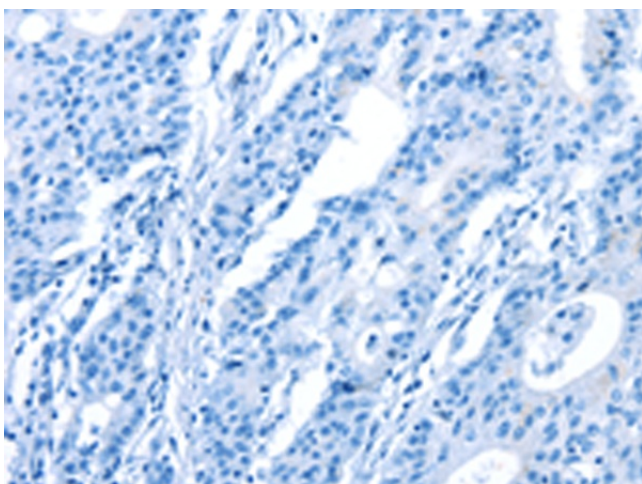
Product Type:	Primary Antibodies
Applications:	IHC
Recommended Dilution:	IHC: 25-100 Positive control: Human gastric cancer Predicted cell location: Cytoplasm
Reactivity:	Human, Mouse
Host:	Rabbit
Isotype:	IgG
Clonality:	Polyclonal
Immunogen:	Synthetic peptide of human BCLAF1
Formulation:	pH7.4 PBS, 0.05% NaN <sub>3</sub> , 40% Glycerol
Concentration:	lot specific
Purification:	Antigen affinity purification
Conjugation:	Unconjugated
Storage:	Store at -20°C as received.
Stability:	Stable for 12 months from date of receipt.
Gene Name:	BCL2 associated transcription factor 1
Database Link:	<a href="#">NP_055554</a> <a href="#">Entrez Gene 72567 Mouse</a> <a href="#">Entrez Gene 9774 Human</a> <a href="#">Q9NYF8</a>
Background:	This gene encodes a transcriptional repressor that interacts with several members of the BCL2 family of proteins. Overexpression of this protein induces apoptosis, which can be suppressed by co-expression of BCL2 proteins. The protein localizes to dot-like structures throughout the nucleus, and redistributes to a zone near the nuclear envelope in cells undergoing apoptosis. Multiple transcript variants encoding different isoforms have been found for this gene.
Synonyms:	bK211L9.1; BTF
Protein Families:	Transcription Factors



[View online »](#)

**Product images:**

Immunohistochemistry of paraffin-embedded Human gastric cancer tissue using TA351016 (BCLAF1 Antibody) at dilution 1/25 (Original magnification:  $\times 200$ )



Immunohistochemistry of paraffin-embedded Human gastric cancer tissue using TA351016 (BCLAF1 Antibody) at dilution 1/25, treated with synthetic peptide. (Original magnification:  $\times 200$ )