

## Product datasheet for **TA351015**

### Bone marrow stromal cell antigen 1 (BST1) Rabbit Polyclonal Antibody

#### Product data:

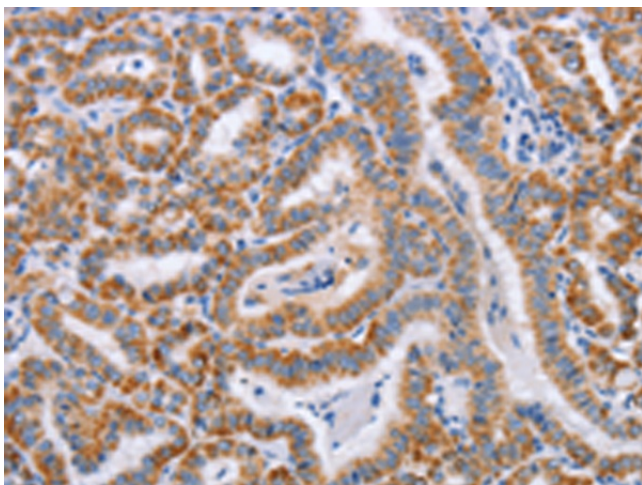
Product Type:	Primary Antibodies
Applications:	IHC
Recommended Dilution:	IHC: 50-200 Positive control: Human thyroid cancer Predicted cell location: Cytoplasm
Reactivity:	Human, Mouse, Rat
Host:	Rabbit
Isotype:	IgG
Clonality:	Polyclonal
Immunogen:	Synthetic peptide of human BST1
Formulation:	pH7.4 PBS, 0.05% NaN <sub>3</sub> , 40% Glycerol
Concentration:	lot specific
Purification:	Antigen affinity purification
Conjugation:	Unconjugated
Storage:	Store at -20°C as received.
Stability:	Stable for 12 months from date of receipt.
Gene Name:	bone marrow stromal cell antigen 1
Database Link:	<a href="#">NP_004325</a> <a href="#">Entrez Gene 12182 Mouse</a> <a href="#">Entrez Gene 81506 Rat</a> <a href="#">Entrez Gene 683 Human</a> <a href="#">Q10588</a>
Background:	Bone marrow stromal cell antigen-1 is a stromal cell line-derived glycosylphosphatidylinositol-anchored molecule that facilitates pre-B-cell growth. The deduced amino acid sequence exhibits 33% similarity with CD38. BST1 expression is enhanced in bone marrow stromal cell lines derived from patients with rheumatoid arthritis. The polyclonal B-cell abnormalities in rheumatoid arthritis may be, at least in part, attributed to BST1 overexpression in the stromal cell population.
Synonyms:	CD157
Protein Families:	Transmembrane



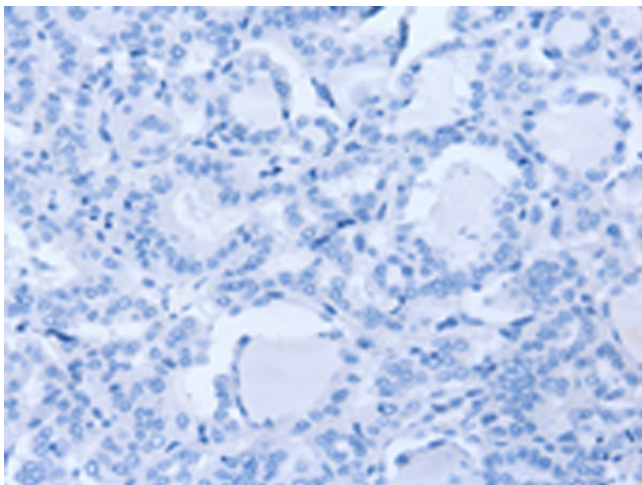
[View online »](#)

Protein Pathways: Calcium signaling pathway, Metabolic pathways, Nicotinate and nicotinamide metabolism

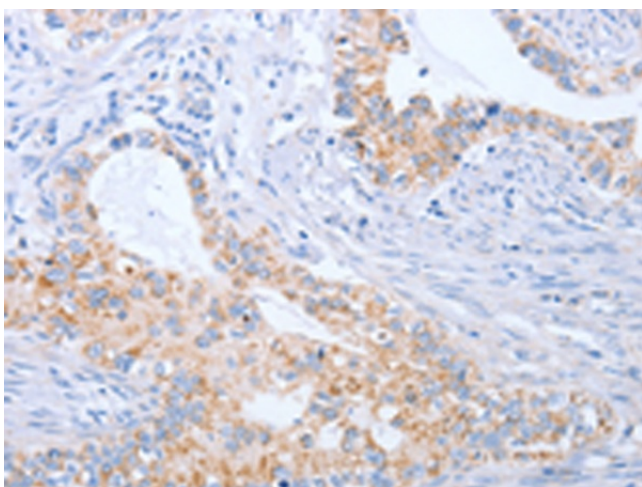
### Product images:



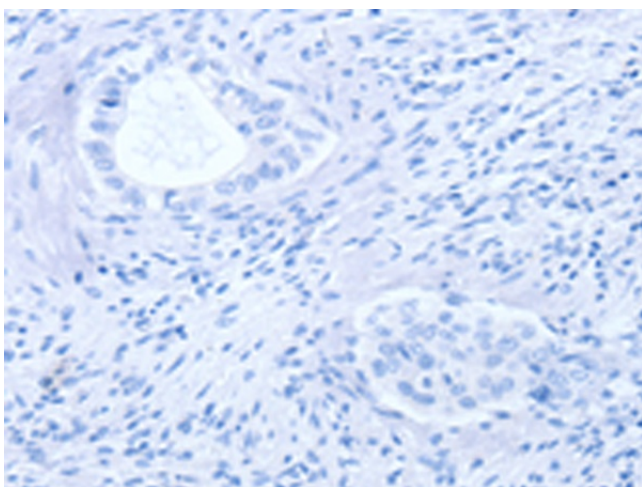
Immunohistochemistry of paraffin-embedded Human thyroid cancer tissue using TA351015 (BST1 Antibody) at dilution 1/50 (Original magnification:  $\times 200$ )



Immunohistochemistry of paraffin-embedded Human thyroid cancer tissue using TA351015 (BST1 Antibody) at dilution 1/50, treated with synthetic peptide. (Original magnification:  $\times 200$ )



Immunohistochemistry of paraffin-embedded Human cervical cancer tissue using TA351015 (BST1 Antibody) at dilution 1/50 (Original magnification:  $\times 200$ )



Immunohistochemistry of paraffin-embedded Human cervical cancer tissue using TA351015 (BST1 Antibody) at dilution 1/50, treated with synthetic peptide. (Original magnification:  $\times 200$ )