

Product datasheet for **TA351014**

Bombesin Receptor 3 (BRS3) Rabbit Polyclonal Antibody

Product data:

Product Type:	Primary Antibodies
Applications:	IHC, WB
Recommended Dilution:	WB: 500-2000 WB positive control: A172 cells IHC: 50-200 Positive control: Human liver cancer Predicted cell location: Cytoplasm
Reactivity:	Human, Mouse, Rat
Host:	Rabbit
Isotype:	IgG
Clonality:	Polyclonal
Immunogen:	Synthetic peptide of human BRS3
Formulation:	pH7.4 PBS, 0.05% NaN ₃ , 40% Glycerol
Concentration:	lot specific
Purification:	Antigen affinity purification
Conjugation:	Unconjugated
Storage:	Store at -20°C as received.
Stability:	Stable for 12 months from date of receipt.
Predicted Protein Size:	44 kDa
Gene Name:	bombesin like receptor 3
Database Link:	NP_001718 Entrez Gene 12209 Mouse Entrez Gene 260319 Rat Entrez Gene 680 Human P32247
Background:	The protein encoded by this gene is a G protein-coupled membrane receptor that binds bombesin-like peptides. This binding results in activation of a phosphatidylinositol-calcium second messenger system, with physiological effects including regulation of metabolic rate, glucose metabolism, and hypertension.
Synonyms:	BB3; BB3R

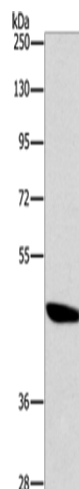


[View online »](#)

Protein Families: Druggable Genome, GPCR, Transmembrane

Protein Pathways: Neuroactive ligand-receptor interaction

Product images:



Gel: 8%SDS-PAGE

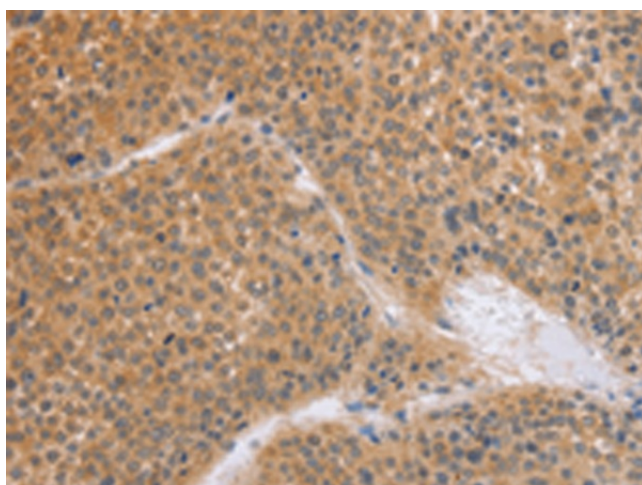
Lysate: 40 μ g

Lane: A172 cells

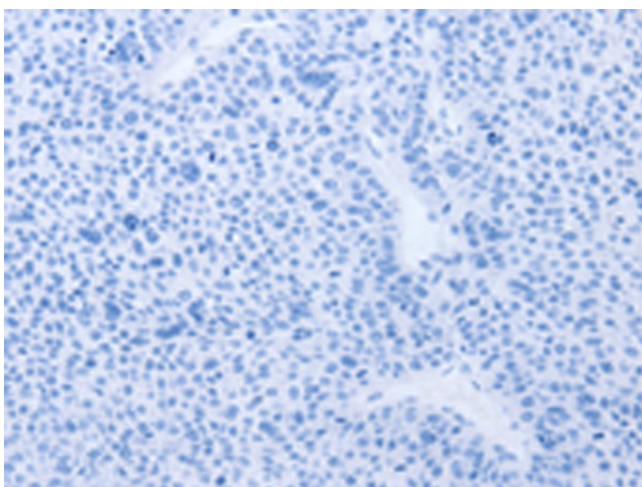
Primary antibody: TA351014 (BRS3 Antibody) at dilution 1/500

Secondary antibody: Goat anti rabbit IgG at 1/8000 dilution

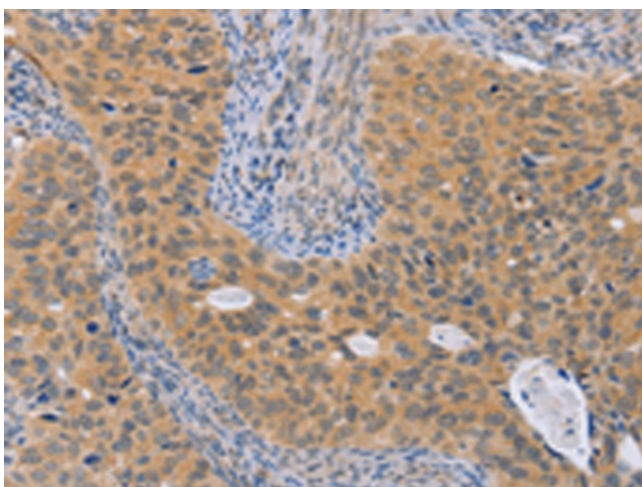
Exposure time: 20 seconds



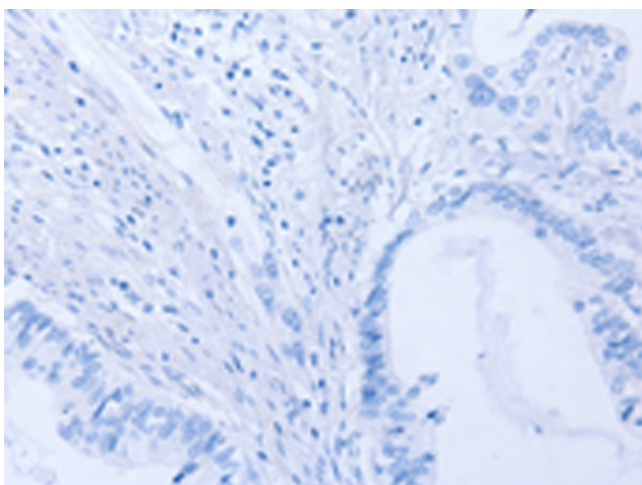
Immunohistochemistry of paraffin-embedded Human liver cancer tissue using TA351014 (BRS3 Antibody) at dilution 1/50 (Original magnification: \times 200)



Immunohistochemistry of paraffin-embedded Human liver cancer tissue using TA351014 (BRS3 Antibody) at dilution 1/50, treated with synthetic peptide. (Original magnification: ×200)



Immunohistochemistry of paraffin-embedded Human cervical cancer tissue using TA351014 (BRS3 Antibody) at dilution 1/50 (Original magnification: ×200)



Immunohistochemistry of paraffin-embedded Human cervical cancer tissue using TA351014 (BRS3 Antibody) at dilution 1/50, treated with synthetic peptide. (Original magnification: ×200)