

Product datasheet for **TA351013**

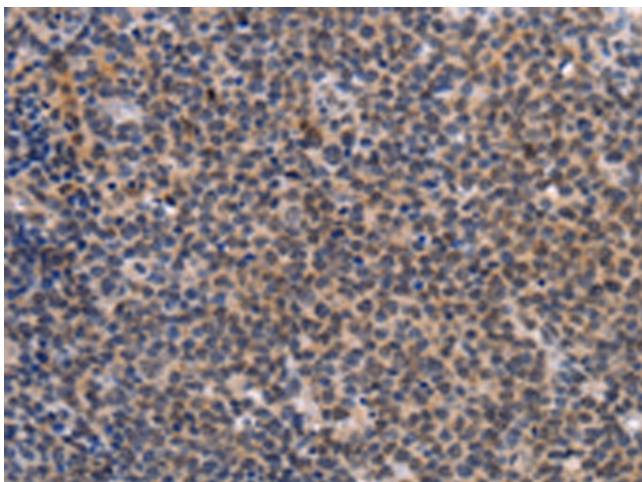
BRN3A (POU4F1) Rabbit Polyclonal Antibody

Product data:

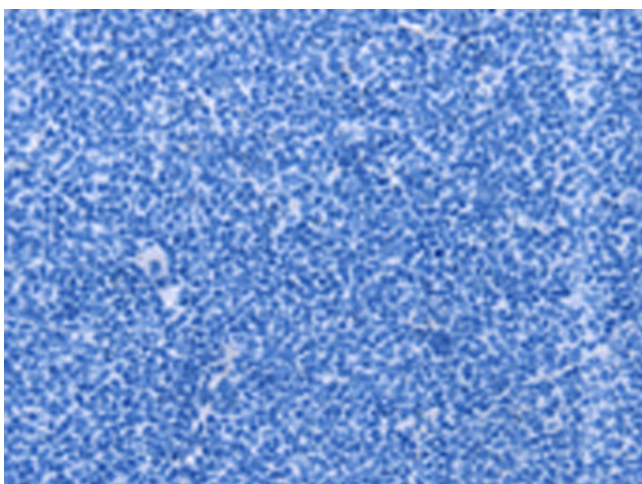
Product Type:	Primary Antibodies
Applications:	IHC
Recommended Dilution:	IHC: 25-100 Positive control: Human Lymphoma Predicted cell location: Nucleus
Reactivity:	Human, Mouse
Host:	Rabbit
Isotype:	IgG
Clonality:	Polyclonal
Immunogen:	Synthetic peptide of human POU4F1
Formulation:	pH7.4 PBS, 0.05% NaN ₃ , 40% Glycerol
Concentration:	lot specific
Purification:	Antigen affinity purification
Conjugation:	Unconjugated
Storage:	Store at -20°C as received.
Stability:	Stable for 12 months from date of receipt.
Gene Name:	POU class 4 homeobox 1
Database Link:	NP_006228 Entrez Gene 18996 Mouse Entrez Gene 5457 Human Q01851
Background:	This gene encodes a member of the POU-IV class of neural transcription factors. This protein is expressed in a subset of retinal ganglion cells and may be involved in the developing sensory nervous system. This protein may also promote the growth of cervical tumors. A translocation of this gene is associated with some adult acute myeloid leukemias.
Synonyms:	brn-3A; BRN3A; Oct-T1; RDC-1
Protein Families:	Transcription Factors



[View online »](#)

Product images:


Immunohistochemistry of paraffin-embedded Human Lymphoma tissue using TA351013 (POU4F1 Antibody) at dilution 1/25 (Original magnification: ×200)



Immunohistochemistry of paraffin-embedded Human Lymphoma tissue using TA351013 (POU4F1 Antibody) at dilution 1/25, treated with synthetic peptide. (Original magnification: ×200)