

## Product datasheet for **TA351012**

### Bone Sialoprotein (IBSP) Rabbit Polyclonal Antibody

#### Product data:

Product Type:	Primary Antibodies
Applications:	IHC, WB
Recommended Dilution:	WB: 500-2000 WB positive control: Jurkat cell lysate IHC: 25-100 Positive control: Human liver cancer Predicted cell location: Secreted
Reactivity:	Human, Mouse
Host:	Rabbit
Isotype:	IgG
Clonality:	Polyclonal
Immunogen:	Synthetic peptide of human IBSP
Formulation:	pH7.4 PBS, 0.05% NaN <sub>3</sub> , 40% Glycerol
Concentration:	lot specific
Purification:	Antigen affinity purification
Conjugation:	Unconjugated
Storage:	Store at -20°C as received.
Stability:	Stable for 12 months from date of receipt.
Predicted Protein Size:	35 kDa
Gene Name:	integrin binding sialoprotein
Database Link:	<a href="#">NP_004958</a> <a href="#">Entrez Gene 3381 Human P21815</a>



[View online »](#)

**Background:**

The protein encoded by this gene is a major structural protein of the bone matrix. It constitutes approximately 12% of the noncollagenous proteins in human bone and is synthesized by skeletal-associated cell types, including hypertrophic chondrocytes, osteoblasts, osteocytes, and osteoclasts. The only extraskeletal site of its synthesis is the trophoblast. This protein binds to calcium and hydroxyapatite via its acidic amino acid clusters, and mediates cell attachment through an RGD sequence that recognizes the vitronectin receptor.

**Synonyms:**

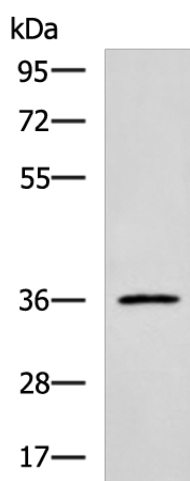
BNSP; BSP; BSP-II; SP-II

**Protein Families:**

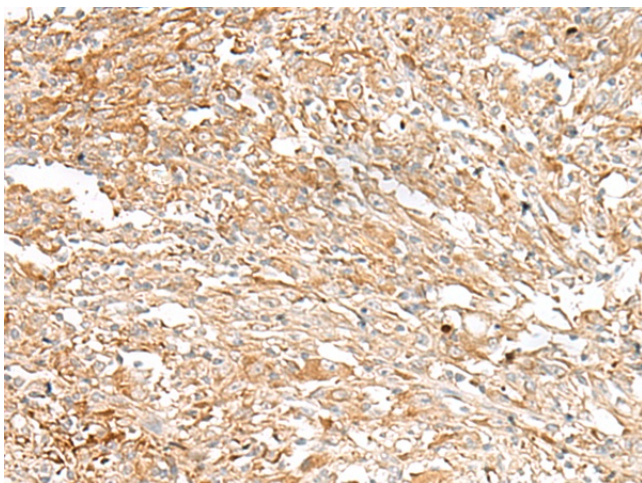
Druggable Genome, Secreted Protein

**Protein Pathways:**

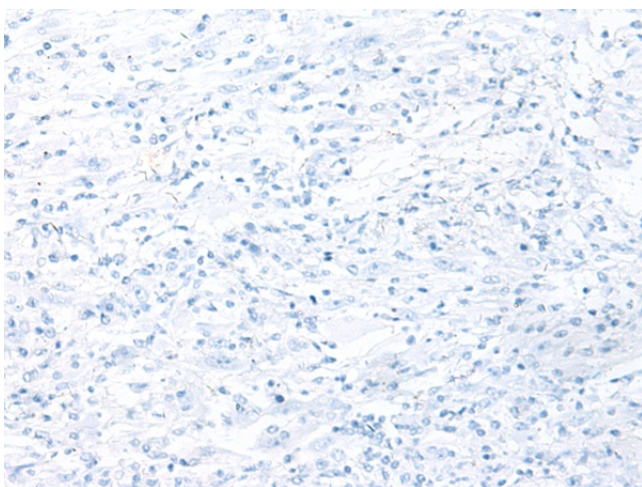
ECM-receptor interaction, Focal adhesion

**Product images:**

Gel: 8%SDS-PAGE  
Lysate: 40 µg  
Lane: Jurkat cell lysate  
Primary antibody: TA351012 (IBSP Antibody) at dilution 1/700  
Secondary antibody: Goat anti rabbit IgG at 1/5000 dilution  
Exposure time: 5 minutes



Immunohistochemistry of paraffin-embedded Human liver cancer tissue using TA351012 (IBSP Antibody) at dilution 1/30 (Original magnification: ×200)



Immunohistochemistry of paraffin-embedded Human liver cancer tissue using TA351012 (IBSP Antibody) at dilution 1/30, treated with synthetic peptide. (Original magnification: x200)