

Product datasheet for **TA351010**

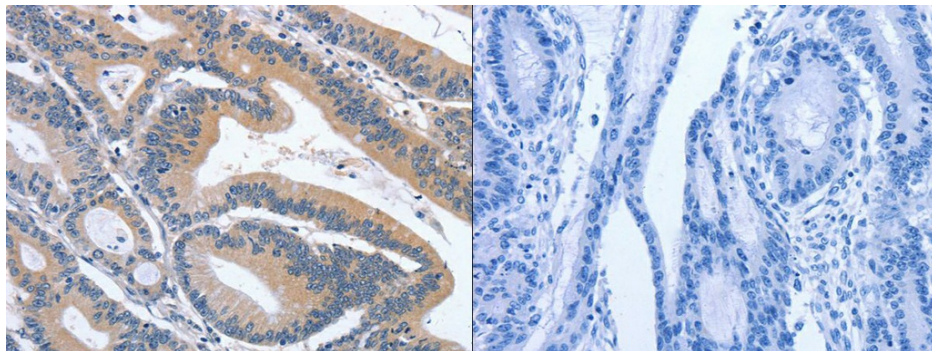
BMP11 (GDF11) Rabbit Polyclonal Antibody

Product data:

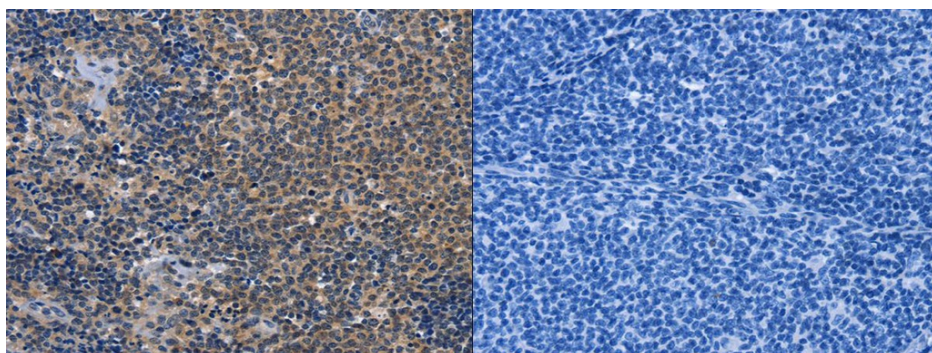
Product Type:	Primary Antibodies
Applications:	IHC
Recommended Dilution:	ELISA: 1000-5000, IHC: 25-100
Reactivity:	Human, Mouse, Rat
Host:	Rabbit
Isotype:	IgG
Clonality:	Polyclonal
Immunogen:	Synthetic peptide of human GDF11
Formulation:	pH7.4 PBS, 0.05% NaN ₃ , 40% Glycerol
Concentration:	lot specific
Purification:	Antigen affinity purification
Conjugation:	Unconjugated
Storage:	Store at -20°C as received.
Stability:	Stable for 12 months from date of receipt.
Gene Name:	growth differentiation factor 11
Database Link:	NP_005802 Entrez Gene 14561 Mouse Entrez Gene 29454 Rat Entrez Gene 10220 Human O95390
Background:	The protein encoded by this gene is a member of the bone morphogenetic protein (BMP) family and the TGF-beta superfamily. This group of proteins is characterized by a polybasic proteolytic processing site which is cleaved to produce a mature protein containing seven conserved cysteine residues. The members of this family are regulators of cell growth and differentiation in both embryonic and adult tissues. Studies in mice and Xenopus suggest that this protein is involved in mesodermal formation and neurogenesis during embryonic development.
Synonyms:	BMP-11; BMP11
Protein Families:	Druggable Genome, Secreted Protein



[View online »](#)

Product images:

The image on the left is immunohistochemistry of paraffin-embedded Human colon cancer tissue using (GDF11 Antibody) at dilution 1/30, on the right is treated with synthetic peptide. (Original magnification: $\times 200$)



The image on the left is immunohistochemistry of paraffin-embedded Human lymphoma tissue using (GDF11 Antibody) at dilution 1/30, on the right is treated with synthetic peptide. (Original magnification: $\times 200$)