

Product datasheet for **TA351007**

BLNK Rabbit Polyclonal Antibody

Product data:

Product Type:	Primary Antibodies
Applications:	IHC, WB
Recommended Dilution:	WB: 500-2000 WB positive control: Mouse liver, kidney and pancreas tissue IHC: 50-200 Positive control: Human lung cancer Predicted cell location: Cytoplasm
Reactivity:	Human, Mouse, Rat
Host:	Rabbit
Isotype:	IgG
Clonality:	Polyclonal
Immunogen:	Synthetic peptide of human BLNK
Formulation:	pH7.4 PBS, 0.05% NaN ₃ , 40% Glycerol
Concentration:	lot specific
Purification:	Antigen affinity purification
Conjugation:	Unconjugated
Storage:	Store at -20°C as received.
Stability:	Stable for 12 months from date of receipt.
Predicted Protein Size:	50 kDa
Gene Name:	B-cell linker
Database Link:	NP_037446 Entrez Gene 17060 Mouse Entrez Gene 499356 Rat Entrez Gene 29760 Human Q8WW28



[View online »](#)

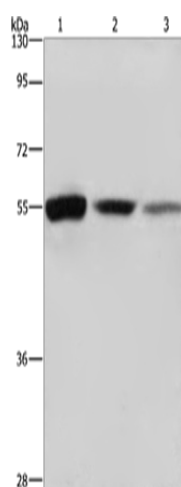
Background: This gene encodes a cytoplasmic linker or adaptor protein that plays a critical role in B cell development. This protein bridges B cell receptor-associated kinase activation with downstream signaling pathways, thereby affecting various biological functions. The phosphorylation of five tyrosine residues is necessary for this protein to nucleate distinct signaling effectors following B cell receptor activation. Mutations in this gene cause hypoglobulinemia and absent B cells, a disease in which the pro- to pre-B-cell transition is developmentally blocked. Deficiency in this protein has also been shown in some cases of pre-B acute lymphoblastic leukemia.

Synonyms: AGM4; BASH; bca; BLNK-S; LY57; SLP-65; SLP65

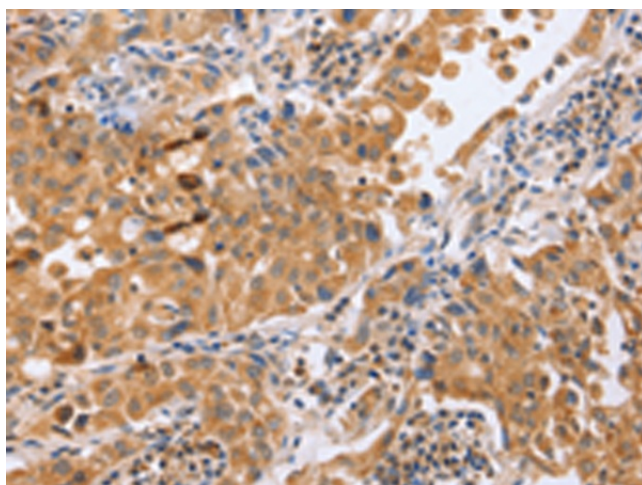
Protein Families: Druggable Genome

Protein Pathways: B cell receptor signaling pathway, Primary immunodeficiency

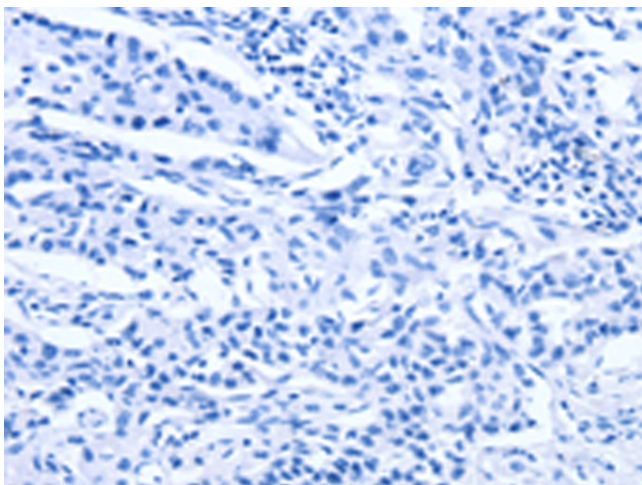
Product images:



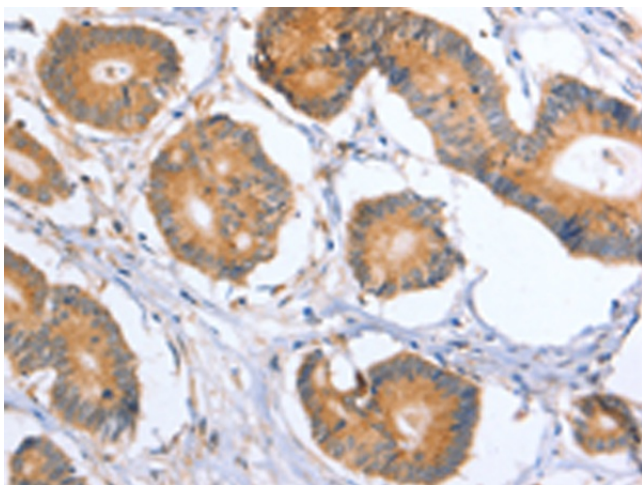
Gel: 8%SDS-PAGE
Lysate: 40 µg
Lane 1-3: Mouse liver
Mouse kidney tissue
Mouse pancreas tissue
Primary antibody: TA351007 (BLNK Antibody) at dilution 1/550
Secondary antibody: Goat anti rabbit IgG at 1/8000 dilution
Exposure time: 40 seconds



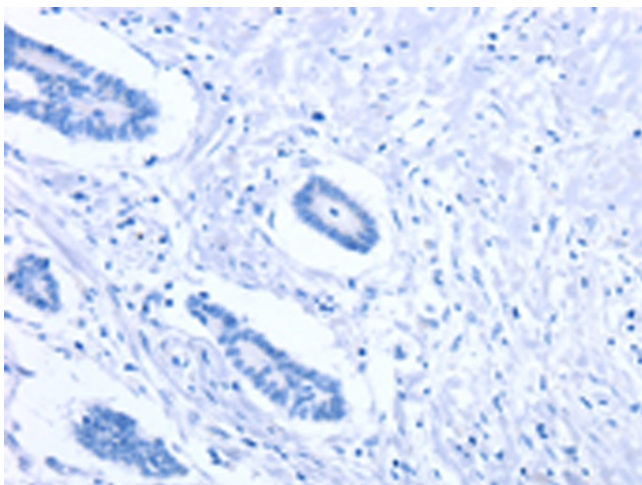
Immunohistochemistry of paraffin-embedded Human lung cancer tissue using TA351007 (BLNK Antibody) at dilution 1/50 (Original magnification: ×200)



Immunohistochemistry of paraffin-embedded Human lung cancer tissue using TA351007 (BLNK Antibody) at dilution 1/50, treated with synthetic peptide. (Original magnification: $\times 200$)



Immunohistochemistry of paraffin-embedded Human colon cancer tissue using TA351007 (BLNK Antibody) at dilution 1/50 (Original magnification: $\times 200$)



Immunohistochemistry of paraffin-embedded Human colon cancer tissue using TA351007 (BLNK Antibody) at dilution 1/50, treated with synthetic peptide. (Original magnification: $\times 200$)