

## Product datasheet for **TA351005**

### Osteocalcin (BGLAP) Rabbit Polyclonal Antibody

#### Product data:

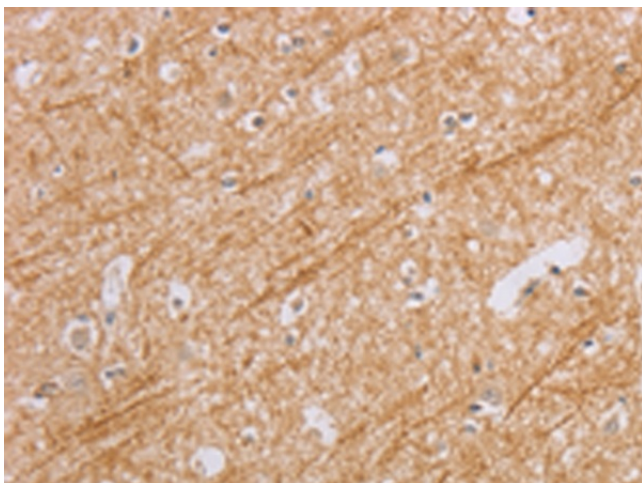
Product Type:	Primary Antibodies
Applications:	IHC
Recommended Dilution:	IHC: 50-200 Positive control: Human brain Predicted cell location: Cytoplasm
Reactivity:	Human
Host:	Rabbit
Isotype:	IgG
Clonality:	Polyclonal
Immunogen:	Synthetic peptide of human BGLAP
Formulation:	pH7.4 PBS, 0.05% NaN <sub>3</sub> , 40% Glycerol
Concentration:	lot specific
Purification:	Antigen affinity purification
Conjugation:	Unconjugated
Storage:	Store at -20°C as received.
Stability:	Stable for 12 months from date of receipt.
Gene Name:	bone gamma-carboxyglutamate protein
Database Link:	<a href="#">NP_954642</a> <a href="#">Entrez Gene 632 Human</a> <a href="#">P02818</a>
Background:	Bone gamma-carboxyglutamic acid (Gla) protein, known as BGLAP, BGP or osteocalcin, is an abundant, non-collagenous protein component of bone that is produced by osteoblasts. In mice, osteocalcin is composed of a cluster of 3 genes known as OG1, OG2 and ORG, all of which can be found within a 23Kb span of genomic DNA. Human osteocalcin is a highly conserved, 46-50 amino acid, single chain protein that contains three vitamin K-dependent gamma-carboxyglutamic acid residues. Osteocalcin appears transiently in embryonic bone at the time of mineral deposition, where it binds to hydroxyapatite in a calcium-dependent manner.
Synonyms:	BGP; OC; OCN



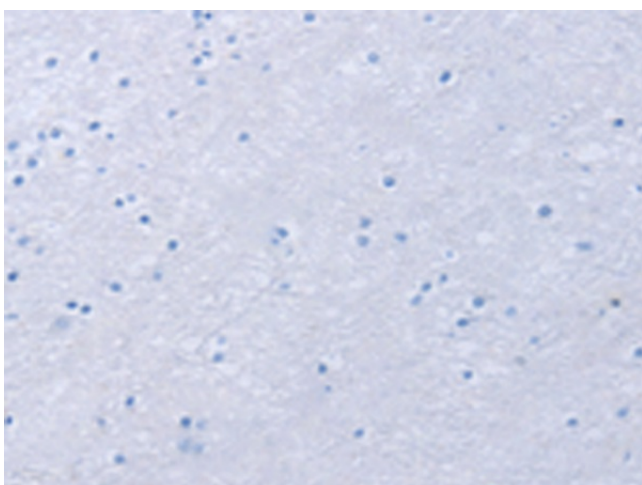
[View online »](#)

Protein Families: ES Cell Differentiation/IPS, Secreted Protein

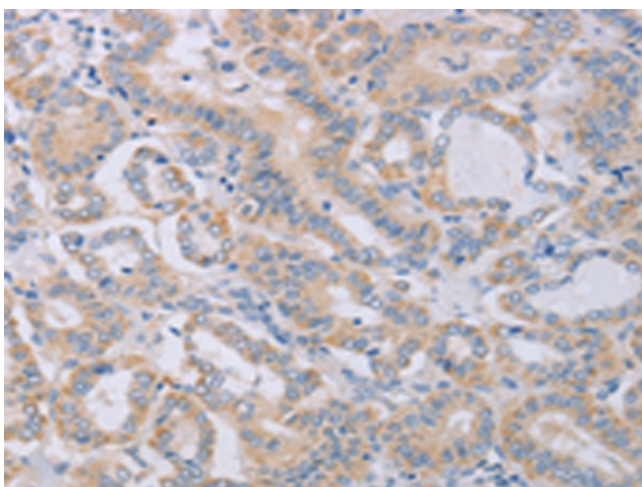
### Product images:



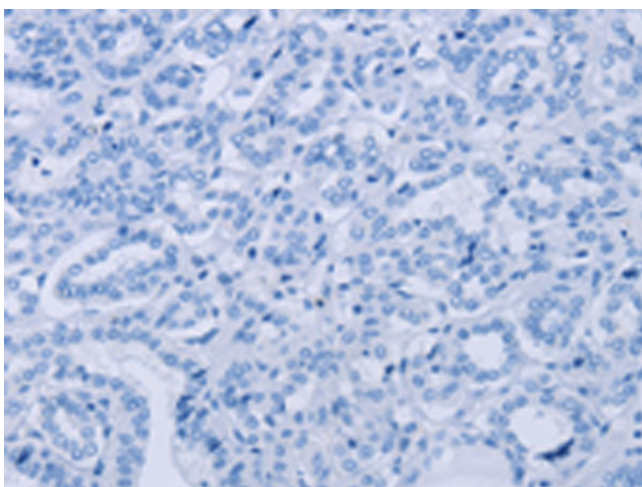
Immunohistochemistry of paraffin-embedded Human brain tissue using TA351005 (BGLAP Antibody) at dilution 1/40 (Original magnification: ×200)



Immunohistochemistry of paraffin-embedded Human brain tissue using TA351005 (BGLAP Antibody) at dilution 1/40, treated with synthetic peptide. (Original magnification: ×200)



Immunohistochemistry of paraffin-embedded Human thyroid cancer tissue using TA351005 (BGLAP Antibody) at dilution 1/40 (Original magnification: ×200)



Immunohistochemistry of paraffin-embedded Human thyroid cancer tissue using TA351005 (BGLAP Antibody) at dilution 1/40, treated with synthetic peptide. (Original magnification: ×200)