

## Product datasheet for **TA351004S**

### BCAS4 Rabbit Polyclonal Antibody

#### Product data:

Product Type:	Primary Antibodies
Applications:	IHC, WB
Recommended Dilution:	WB: 500-2000 WB positive control: K562 and Hela cell lysates Human left kidney tissue and fetal intestines tissue lysates IHC: 50-200 Positive control: Human gastric cancer Predicted cell location: Cytoplasm
Reactivity:	Human
Host:	Rabbit
Isotype:	IgG
Clonality:	Polyclonal
Immunogen:	Synthetic peptide of human BCAS4
Formulation:	pH7.4 PBS, 0.05% NaN <sub>3</sub> , 40% Glycerol
Purification:	Antigen affinity purification
Conjugation:	Unconjugated
Storage:	Store at -20°C as received.
Stability:	Stable for 12 months from date of receipt.
Predicted Protein Size:	23 kDa
Gene Name:	breast carcinoma amplified sequence 4
Database Link:	<a href="#">NP_942094</a> <a href="#">Entrez Gene 55653 Human</a> <a href="#">Q8TDM0</a>



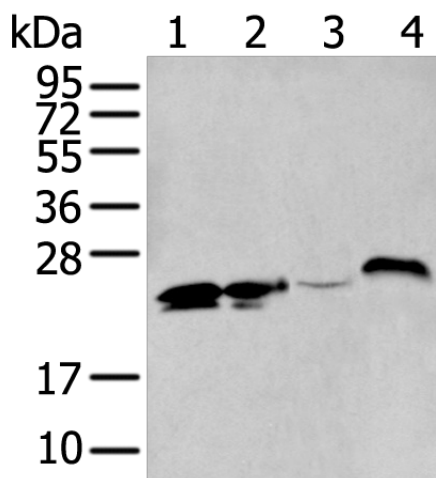
[View online »](#)

**Background:**

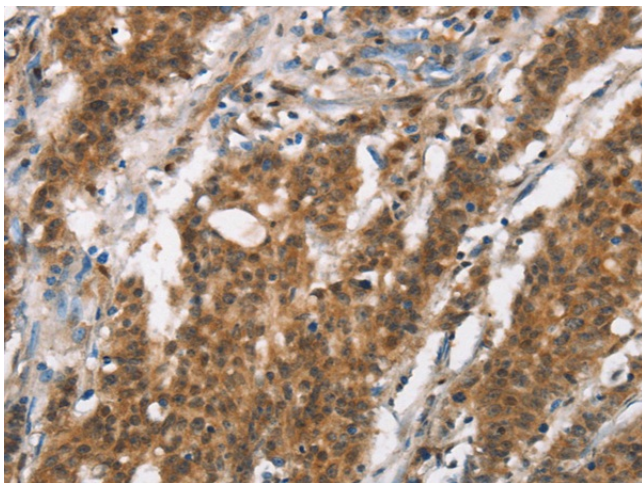
The gene encoding BCAS4 (Breast carcinoma-amplified sequence 4), a 211 amino acid protein, is found in a region on chromosome 20 that is frequently amplified in human breast cancer. The amplification and translocation between the BCAS4 gene and the BCAS3 gene, with a 17q23 locus, results in a fusion transcript that is overexpressed in MCF-7 cells. Also, deletion of chromosomal region 20q13.13-q13.2 and resultant deletion of BCAS4, as well as three other genes, is the cause of Okihiro syndrome, a disease characterized by ocular and upper limb anomalies.

**Synonyms:**

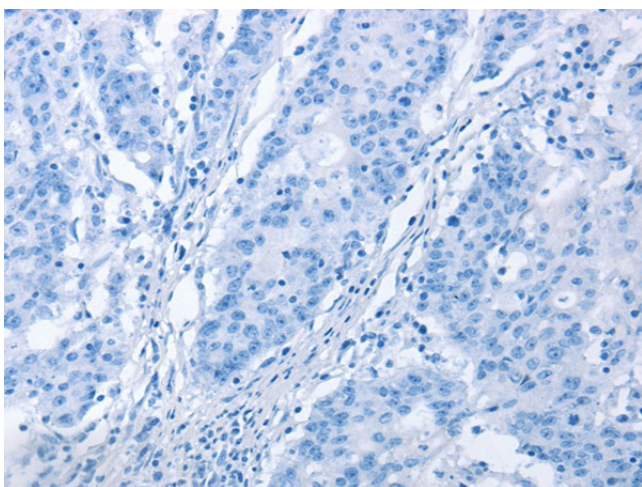
CNOL

**Product images:**


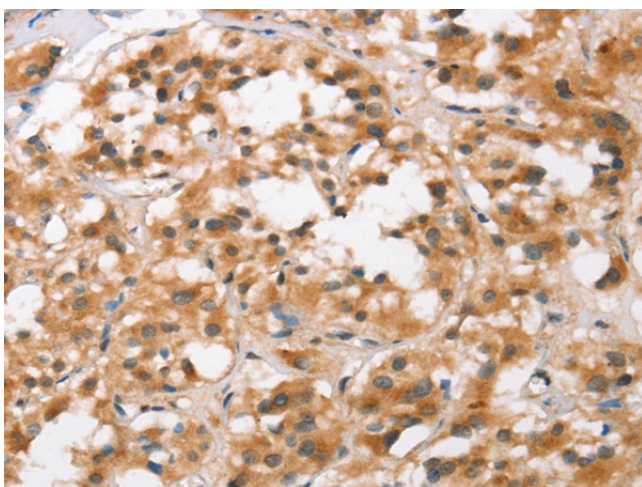
Gel: 12%SDS-PAGE  
 Lysate: 40 µg  
 Lane 1-4: K562 and HeLa cell lysates  
 Human left kidney tissue and fetal intestines  
 tissue lysates  
 Primary antibody: [TA351004] (BCAS4 Antibody)  
 at dilution 1/400  
 Secondary antibody: Goat anti rabbit IgG at  
 1/8000 dilution  
 Exposure time: 10 seconds



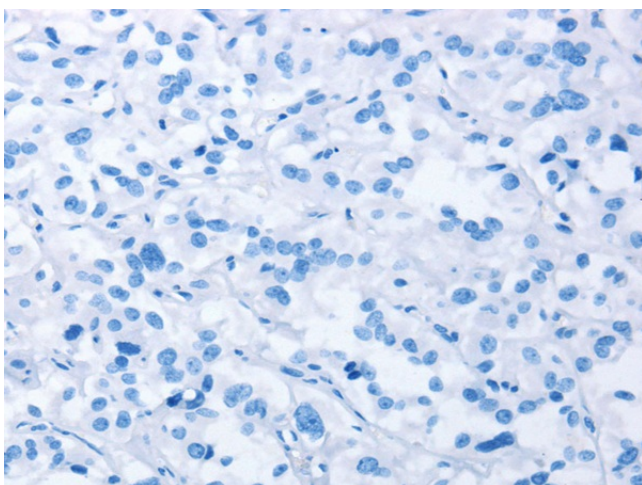
Immunohistochemistry of paraffin-embedded  
 Human gastric cancer tissue using [TA351004]  
 (BCAS4 Antibody) at dilution 1/50 (Original  
 magnification: ×200)



Immunohistochemistry of paraffin-embedded Human gastric cancer tissue using [TA351004] (BCAS4 Antibody) at dilution 1/50, treated with synthetic peptide. (Original magnification: ×200)



Immunohistochemistry of paraffin-embedded Human thyroid cancer tissue using [TA351004] (BCAS4 Antibody) at dilution 1/50 (Original magnification: ×200)



Immunohistochemistry of paraffin-embedded Human thyroid cancer tissue using [TA351004] (BCAS4 Antibody) at dilution 1/50, treated with synthetic peptide. (Original magnification: ×200)