

Product datasheet for **TA351000S**

BAI1 (ADGRB1) Rabbit Polyclonal Antibody

Product data:

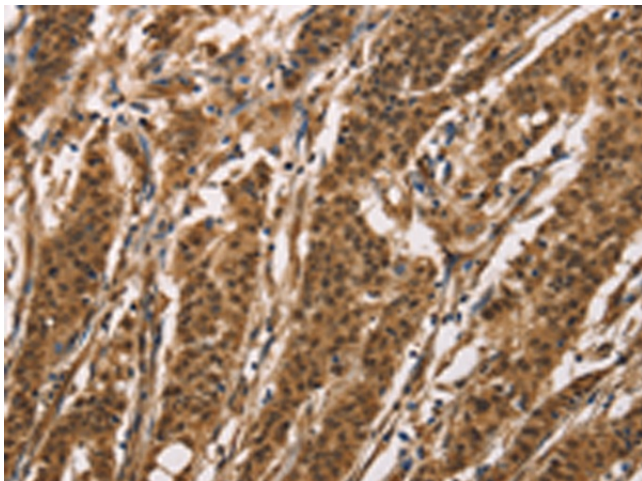
Product Type:	Primary Antibodies
Applications:	IHC
Recommended Dilution:	IHC: 50-200 Positive control: Human gastric cancer Predicted cell location: Cytoplasm and Nucleus
Reactivity:	Human, Mouse, Rat
Host:	Rabbit
Isotype:	IgG
Clonality:	Polyclonal
Immunogen:	Synthetic peptide of human BAI1
Formulation:	pH7.4 PBS, 0.05% NaN ₃ , 40% Glycerol
Purification:	Antigen affinity purification
Conjugation:	Unconjugated
Storage:	Store at -20°C as received.
Stability:	Stable for 12 months from date of receipt.
Gene Name:	adhesion G protein-coupled receptor B1
Database Link:	NP_001693 Entrez Gene 107831 Mouse Entrez Gene 362931 Rat Entrez Gene 575 Human O14514
Background:	Angiogenesis is controlled by a local balance between stimulators and inhibitors of new vessel growth and is suppressed under normal physiologic conditions. Angiogenesis has been shown to be essential for growth and metastasis of solid tumors. In order to obtain blood supply for their growth, tumor cells are potently angiogenic and attract new vessels as results of increased secretion of inducers and decreased production of endogenous negative regulators. BAI1 contains at least one 'functional' p53-binding site within an intron, and its expression has been shown to be induced by wildtype p53.
Synonyms:	BAI1; GDAIF
Protein Families:	Druggable Genome, Transmembrane



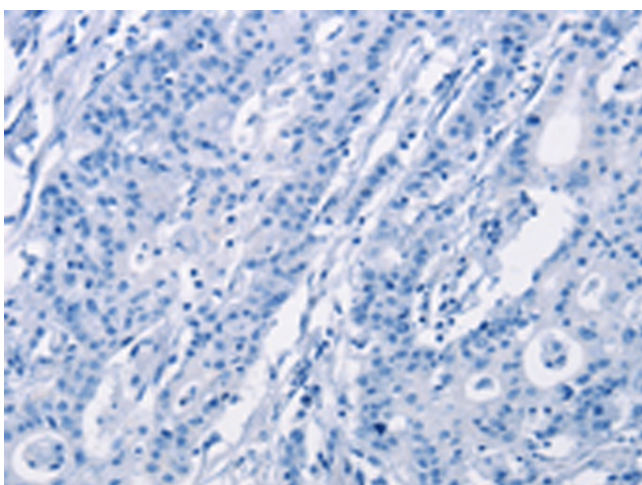
[View online »](#)

Protein Pathways: p53 signaling pathway

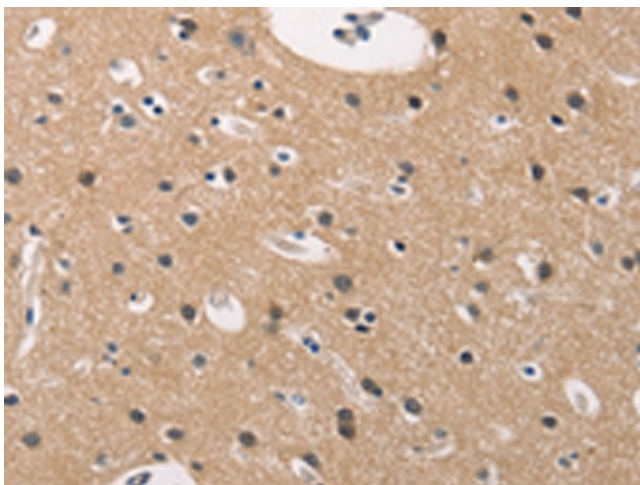
Product images:



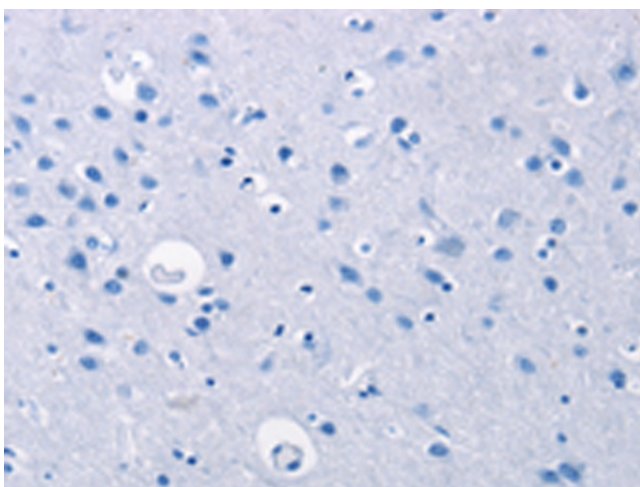
Immunohistochemistry of paraffin-embedded Human gastric cancer tissue using [TA351000] (ADGRB1 Antibody) at dilution 1/40 (Original magnification: $\times 200$)



Immunohistochemistry of paraffin-embedded Human gastric cancer tissue using [TA351000] (ADGRB1 Antibody) at dilution 1/40, treated with synthetic peptide. (Original magnification: $\times 200$)



Immunohistochemistry of paraffin-embedded Human brain tissue using [TA351000] (ADGRB1 Antibody) at dilution 1/40 (Original magnification: $\times 200$)



Immunohistochemistry of paraffin-embedded Human brain tissue using [TA351000] (ADGRB1 Antibody) at dilution 1/40, treated with synthetic peptide. (Original magnification: $\times 200$)