

## Product datasheet for **TA351000**

### **BAI1 (ADGRB1) Rabbit Polyclonal Antibody**

#### **Product data:**

<b>Product Type:</b>	Primary Antibodies
<b>Applications:</b>	IHC
<b>Recommended Dilution:</b>	IHC: 50-200 Positive control: Human gastric cancer Predicted cell location: Cytoplasm and Nucleus
<b>Reactivity:</b>	Human, Mouse, Rat
<b>Host:</b>	Rabbit
<b>Isotype:</b>	IgG
<b>Clonality:</b>	Polyclonal
<b>Immunogen:</b>	Synthetic peptide of human BAI1
<b>Formulation:</b>	pH7.4 PBS, 0.05% NaN <sub>3</sub> , 40% Glycerol
<b>Concentration:</b>	lot specific
<b>Purification:</b>	Antigen affinity purification
<b>Conjugation:</b>	Unconjugated
<b>Storage:</b>	Store at -20°C as received.
<b>Stability:</b>	Stable for 12 months from date of receipt.
<b>Gene Name:</b>	adhesion G protein-coupled receptor B1
<b>Database Link:</b>	<a href="#">NP_001693</a> <a href="#">Entrez Gene 107831 Mouse</a> <a href="#">Entrez Gene 362931 Rat</a> <a href="#">Entrez Gene 575 Human</a> <a href="#">O14514</a>
<b>Background:</b>	Angiogenesis is controlled by a local balance between stimulators and inhibitors of new vessel growth and is suppressed under normal physiologic conditions. Angiogenesis has been shown to be essential for growth and metastasis of solid tumors. In order to obtain blood supply for their growth, tumor cells are potently angiogenic and attract new vessels as results of increased secretion of inducers and decreased production of endogenous negative regulators. BAI1 contains at least one 'functional' p53-binding site within an intron, and its expression has been shown to be induced by wildtype p53.
<b>Synonyms:</b>	BAI1; GDAIF

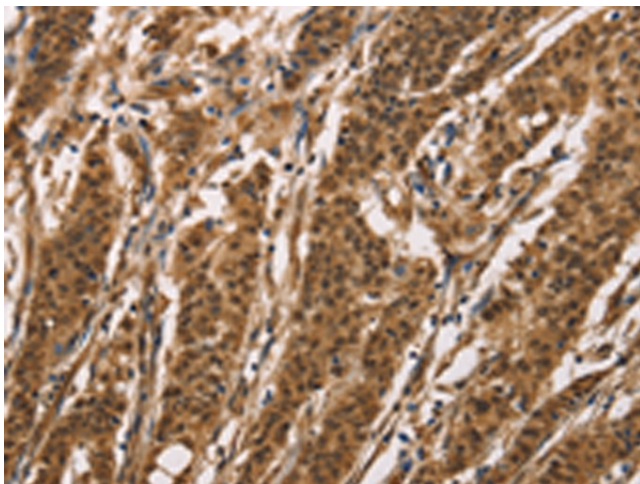


[View online »](#)

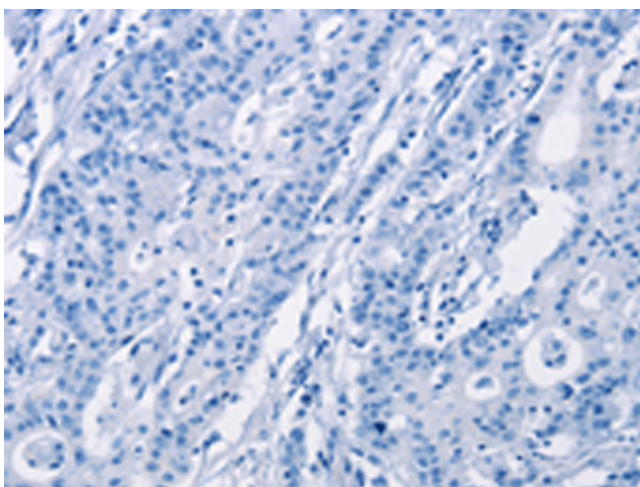
Protein Families: Druggable Genome, Transmembrane

Protein Pathways: p53 signaling pathway

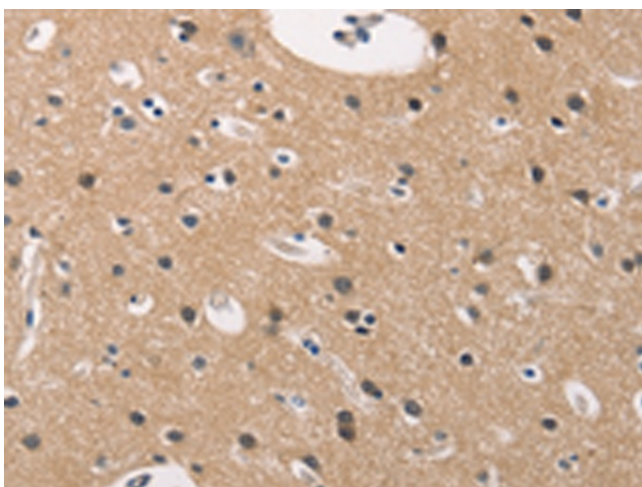
### Product images:



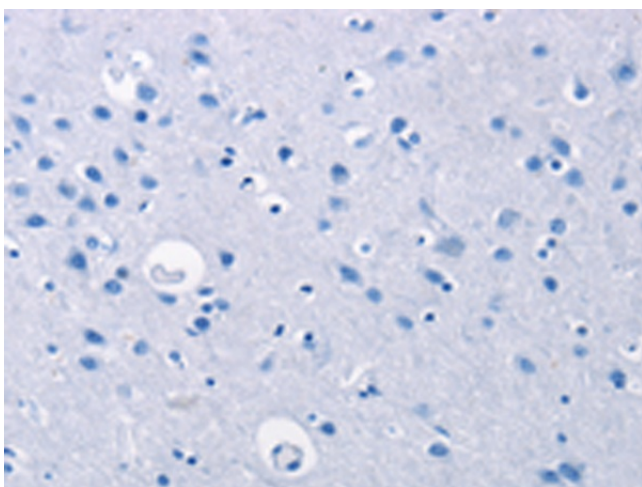
Immunohistochemistry of paraffin-embedded Human gastric cancer tissue using TA351000 (ADGRB1 Antibody) at dilution 1/40 (Original magnification:  $\times 200$ )



Immunohistochemistry of paraffin-embedded Human gastric cancer tissue using TA351000 (ADGRB1 Antibody) at dilution 1/40, treated with synthetic peptide. (Original magnification:  $\times 200$ )



Immunohistochemistry of paraffin-embedded Human brain tissue using TA351000 (ADGRB1 Antibody) at dilution 1/40 (Original magnification: ×200)



Immunohistochemistry of paraffin-embedded Human brain tissue using TA351000 (ADGRB1 Antibody) at dilution 1/40, treated with synthetic peptide. (Original magnification: ×200)