

## Product datasheet for **TA350996S**

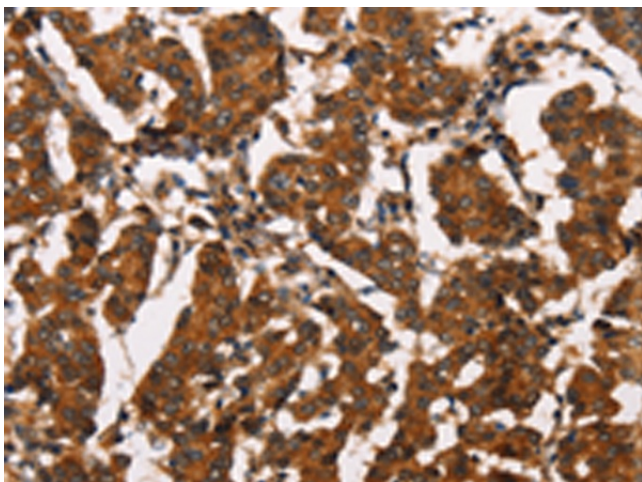
### Attractin (ATRN) Rabbit Polyclonal Antibody

#### Product data:

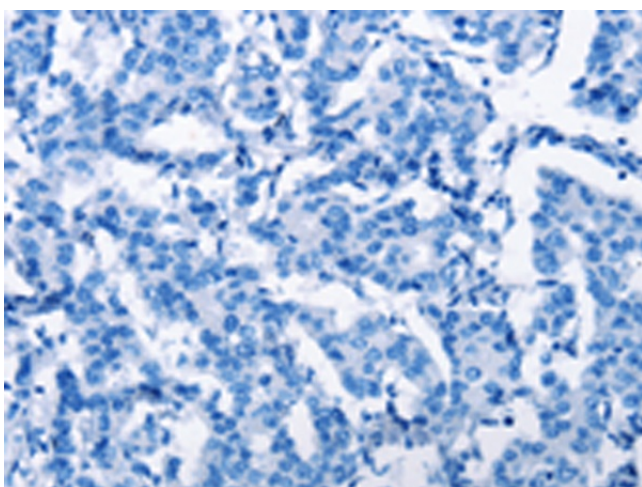
Product Type:	Primary Antibodies
Applications:	IHC
Recommended Dilution:	IHC: 50-200 Positive control: Human breast cancer Predicted cell location: Cytoplasm
Reactivity:	Human, Mouse, Rat
Host:	Rabbit
Isotype:	IgG
Clonality:	Polyclonal
Immunogen:	Synthetic peptide of human ATRN
Formulation:	pH7.4 PBS, 0.05% NaN <sub>3</sub> , 40% Glycerol
Purification:	Antigen affinity purification
Conjugation:	Unconjugated
Storage:	Store at -20°C as received.
Stability:	Stable for 12 months from date of receipt.
Gene Name:	attractin
Database Link:	<a href="#">NP_647537</a> <a href="#">Entrez Gene 11990 Mouse</a> <a href="#">Entrez Gene 83526 Rat</a> <a href="#">Entrez Gene 8455 Human</a> <a href="#">O75882</a>
Background:	Multiple transcript variants encoding different isoforms exist for this gene. One of the isoforms is a membrane-bound protein with sequence similarity to the mouse mahogany protein, a receptor involved in controlling obesity. The other two isoforms are secreted proteins involved in the initial immune cell clustering during inflammatory responses that may regulate the chemotactic activity of chemokines.
Synonyms:	DPPT-L; MGCA
Protein Families:	Druggable Genome, Secreted Protein, Transmembrane



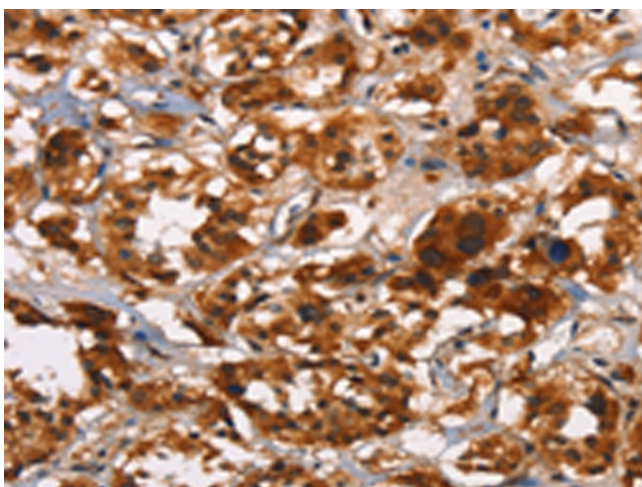
[View online »](#)

**Product images:**

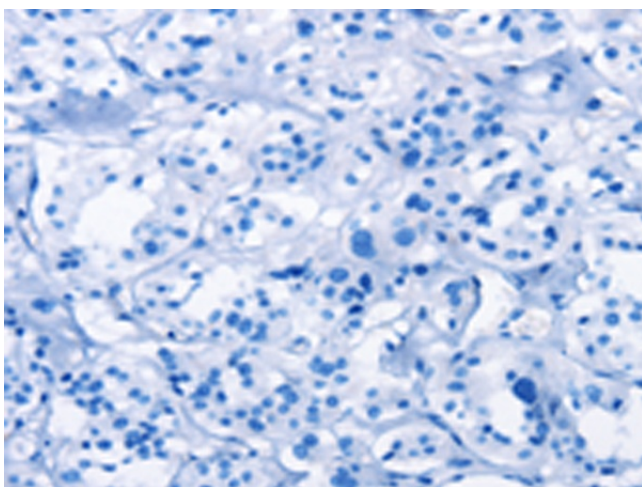
Immunohistochemistry of paraffin-embedded Human breast cancer tissue using [TA350996] (ATRN Antibody) at dilution 1/50 (Original magnification:  $\times 200$ )



Immunohistochemistry of paraffin-embedded Human breast cancer tissue using [TA350996] (ATRN Antibody) at dilution 1/50, treated with synthetic peptide. (Original magnification:  $\times 200$ )



Immunohistochemistry of paraffin-embedded Human thyroid cancer tissue using [TA350996] (ATRN Antibody) at dilution 1/50 (Original magnification: x200)



Immunohistochemistry of paraffin-embedded Human thyroid cancer tissue using [TA350996] (ATRN Antibody) at dilution 1/50, treated with synthetic peptide. (Original magnification: x200)