

## Product datasheet for **TA350995**

### ATP7A Rabbit Polyclonal Antibody

#### Product data:

Product Type:	Primary Antibodies
Applications:	IHC, WB
Recommended Dilution:	WB: 200-1000 WB positive control: HepG2 cells IHC: 50-200 Positive control: Human gastric cancer Predicted cell location: Cytoplasm
Reactivity:	Human, Mouse, Rat
Host:	Rabbit
Isotype:	IgG
Clonality:	Polyclonal
Immunogen:	Synthetic peptide of human ATP7A
Formulation:	pH7.4 PBS, 0.05% NaN <sub>3</sub> , 40% Glycerol
Concentration:	lot specific
Purification:	Antigen affinity purification
Conjugation:	Unconjugated
Storage:	Store at -20°C as received.
Stability:	Stable for 12 months from date of receipt.
Predicted Protein Size:	163 kDa
Gene Name:	ATPase copper transporting alpha
Database Link:	<a href="#">NP_000043</a> <a href="#">Entrez Gene 11977 Mouse</a> <a href="#">Entrez Gene 24941 Rat</a> <a href="#">Entrez Gene 538 Human</a> <a href="#">Q04656</a>



[View online »](#)

**Background:**

This gene encodes a transmembrane protein that functions in copper transport across membranes. This protein is localized to the trans Golgi network, where it is predicted to supply copper to copper-dependent enzymes in the secretory pathway. It relocalizes to the plasma membrane under conditions of elevated extracellular copper, and functions in the efflux of copper from cells. Mutations in this gene are associated with Menkes disease, X-linked distal spinal muscular atrophy, and occipital horn syndrome. Alternatively-spliced transcript variants have been observed.

**Synonyms:**

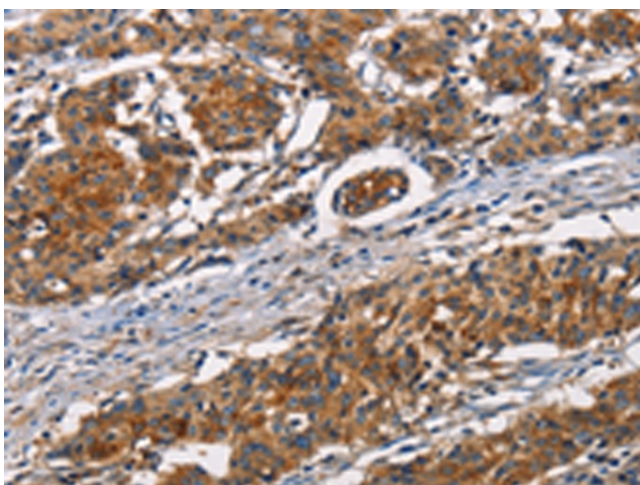
DSMAX; MK; MNK; SMAX3

**Protein Families:**

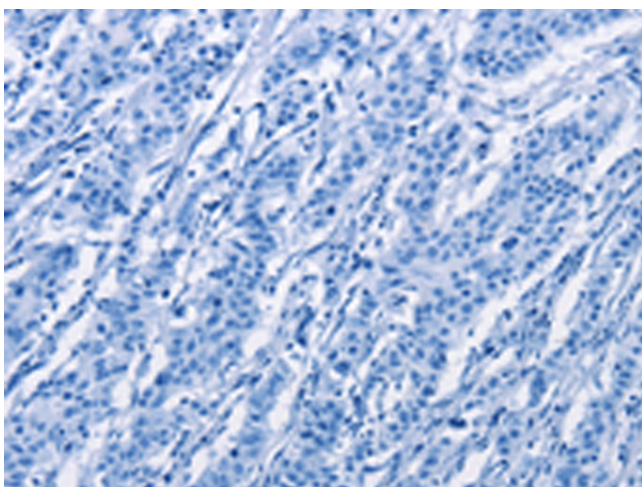
Druggable Genome, Transmembrane

**Product images:**

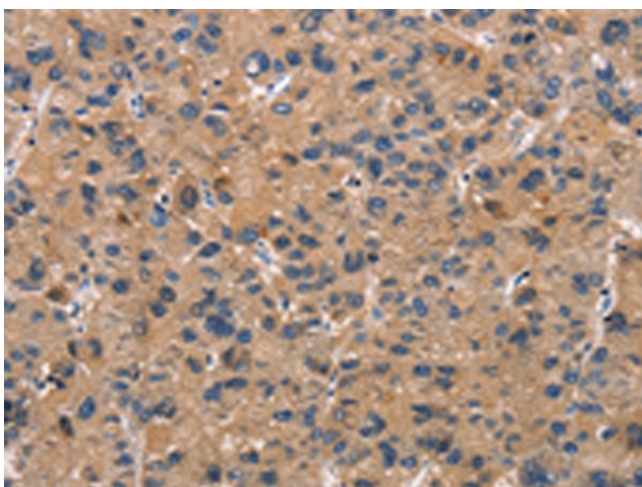

Gel: 6%SDS-PAGE  
Lysate: 40 µg  
Lane: HepG2 cells  
Primary antibody: TA350995 (ATP7A Antibody) at dilution 1/800  
Secondary antibody: Goat anti rabbit IgG at 1/8000 dilution  
Exposure time: 10 minutes



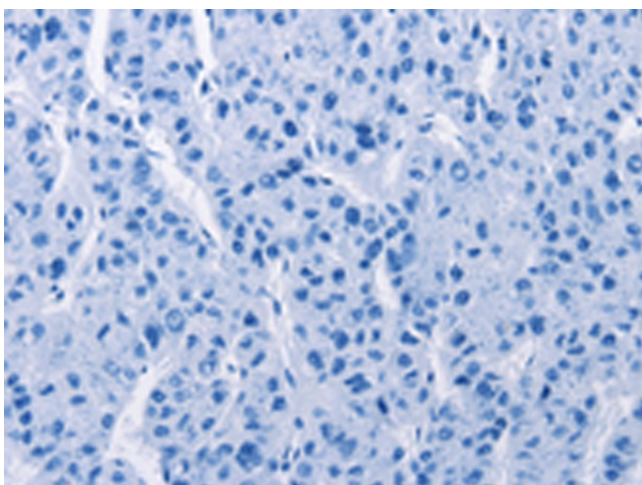
Immunohistochemistry of paraffin-embedded Human gastric cancer tissue using TA350995 (ATP7A Antibody) at dilution 1/50 (Original magnification: ×200)



Immunohistochemistry of paraffin-embedded Human gastric cancer tissue using TA350995 (ATP7A Antibody) at dilution 1/50, treated with synthetic peptide. (Original magnification: ×200)



Immunohistochemistry of paraffin-embedded Human liver cancer tissue using TA350995 (ATP7A Antibody) at dilution 1/50 (Original magnification: ×200)



Immunohistochemistry of paraffin-embedded Human liver cancer tissue using TA350995 (ATP7A Antibody) at dilution 1/50, treated with synthetic peptide. (Original magnification: ×200)