

Product datasheet for **TA350986**

GPR182 Rabbit Polyclonal Antibody

Product data:

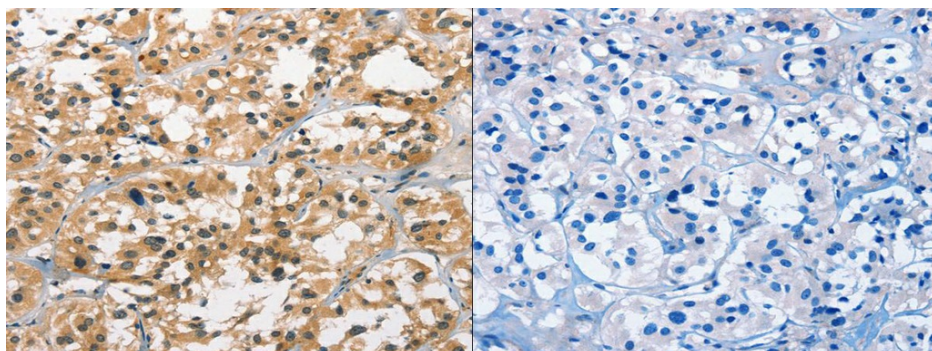
Product Type:	Primary Antibodies
Applications:	IHC, WB
Recommended Dilution:	ELISA: 1000-2000, WB: 200-1000, IHC: 25-100
Reactivity:	Human, Mouse
Host:	Rabbit
Isotype:	IgG
Clonality:	Polyclonal
Immunogen:	Synthetic peptide of human GPR182
Formulation:	pH7.4 PBS, 0.05% NaN ₃ , 40% Glycerol
Concentration:	lot specific
Purification:	Antigen affinity purification
Conjugation:	Unconjugated
Storage:	Store at -20°C as received.
Stability:	Stable for 12 months from date of receipt.
Predicted Protein Size:	45 kDa
Gene Name:	G protein-coupled receptor 182
Database Link:	NP_009195 Entrez Gene 11318 Human O15218
Background:	Adrenomedullin is a potent vasodilator peptide that exerts major effects on cardiovascular function. This gene encodes a seven-transmembrane protein that belongs to the family 1 of G-protein coupled receptors. Studies of the rat counterpart suggest that the encoded protein may function as a receptor for adrenomedullin.
Synonyms:	7TMR; ADMR; AM-R; AMR; G10D; gamrh; hrhAMR
Protein Families:	Druggable Genome, GPCR, Transmembrane



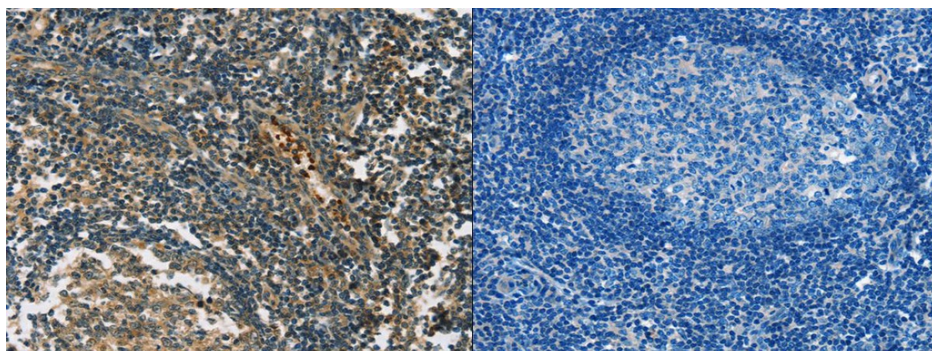
[View online »](#)

Product images:

Gel: 8%SDS-PAGE, Lysate: 40 ug, Lane: Mouse liver tissue, Primary antibody: (GPR182 Antibody) at dilution 1/1000, Secondary antibody: Goat anti rabbit IgG at 1/8000 dilution, Exposure time: 8 minutes



The image on the left is immunohistochemistry of paraffin-embedded Human thyroid cancer tissue using (GPR182 Antibody) at dilution 1/30, on the right is treated with synthetic peptide. (Original magnification: $\times 200$)



The image on the left is immunohistochemistry of paraffin-embedded Human tonsil tissue using (GPR182 Antibody) at dilution 1/30, on the right is treated with synthetic peptide. (Original magnification: $\times 200$)