

Product datasheet for **TA350983**

BNIP3L Rabbit Polyclonal Antibody

Product data:

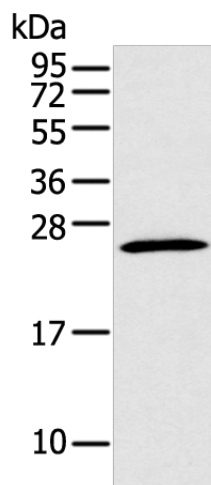
Product Type:	Primary Antibodies
Applications:	IHC, WB
Recommended Dilution:	WB: 200-1000 WB positive control: Mouse kidney tissue IHC: 50-200 Positive control: Human thyroid cancer Predicted cell location: cytoplasm
Reactivity:	Human, Mouse
Host:	Rabbit
Isotype:	IgG
Clonality:	Polyclonal
Immunogen:	Synthetic peptide of human BNIP3L
Formulation:	pH7.4 PBS, 0.05% NaN ₃ , 40% Glycerol
Concentration:	lot specific
Purification:	Antigen affinity purification
Conjugation:	Unconjugated
Storage:	Store at -20°C as received.
Stability:	Stable for 12 months from date of receipt.
Gene Name:	BCL2/adenovirus E1B 19kDa interacting protein 3-like
Database Link:	NP_004322 Entrez Gene 12177 Mouse Entrez Gene 665 Human O60238
Background:	This gene is a member of the BCL2/adenovirus E1B 19 kd-interacting protein (BNIP) family. It interacts with the E1B 19 kDa protein, which protects cells from virally-induced cell death. The encoded protein also interacts with E1B 19 kDa-like sequences of BCL2, another apoptotic protector. This protein counteracts the apoptotic inducer BNIP3 and may play a role in tumor suppression.
Synonyms:	BNIP3a; NIX



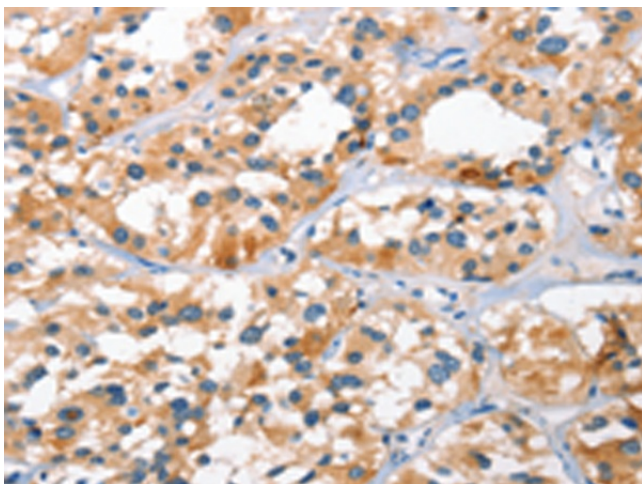
[View online »](#)

Protein Families: Druggable Genome, Transmembrane

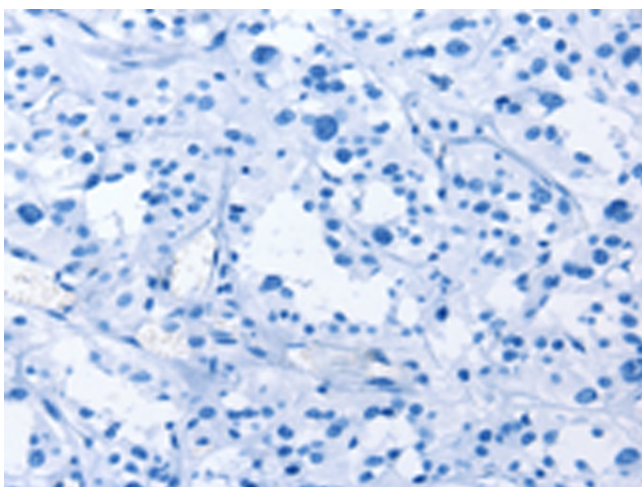
Product images:



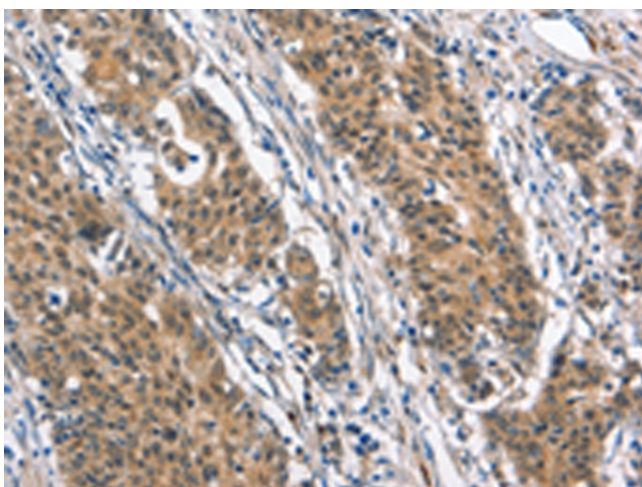
Gel: 12%SDS-PAGE
Lysate: 40 μ g
Lane: Mouse kidney tissue
Primary antibody: TA350983 (BNIP3L Antibody) at dilution 1/250
Secondary antibody: Goat anti rabbit IgG at 1/8000 dilution
Exposure time: 2 minutes



Immunohistochemistry of paraffin-embedded Human thyroid cancer tissue using TA350983 (BNIP3L Antibody) at dilution 1/40 (Original magnification: \times 200)



Immunohistochemistry of paraffin-embedded Human thyroid cancer tissue using TA350983 (BNIP3L Antibody) at dilution 1/40, treated with synthetic peptide. (Original magnification: ×200)



Immunohistochemistry of paraffin-embedded Human gastric cancer tissue using TA350983 (BNIP3L Antibody) at dilution 1/40 (Original magnification: ×200)