

Product datasheet for **TA350979**

Tau (MAPT) Rabbit Polyclonal Antibody

Product data:

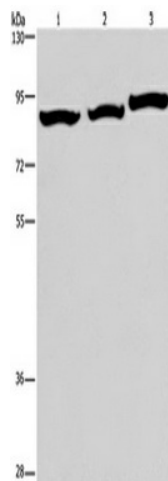
Product Type:	Primary Antibodies
Applications:	IHC, WB
Recommended Dilution:	ELISA: 2000-5000, WB: 500-2000, IHC: 25-100
Reactivity:	Human, Mouse
Host:	Rabbit
Isotype:	IgG
Clonality:	Polyclonal
Immunogen:	Synthetic peptide of human MAPT
Formulation:	pH7.4 PBS, 0.05% NaN ₃ , 40% Glycerol
Concentration:	lot specific
Purification:	Antigen affinity purification
Conjugation:	Unconjugated
Storage:	Store at -20°C as received.
Stability:	Stable for 12 months from date of receipt.
Predicted Protein Size:	79 kDa
Gene Name:	microtubule associated protein tau
Database Link:	NP_005901 Entrez Gene 17762 Mouse Entrez Gene 4137 Human P10636
Background:	This gene encodes the microtubule-associated protein tau (MAPT) whose transcript undergoes complex, regulated alternative splicing, giving rise to several mRNA species. MAPT transcripts are differentially expressed in the nervous system, depending on stage of neuronal maturation and neuron type. MAPT gene mutations have been associated with several neurodegenerative disorders such as Alzheimer's disease, Pick's disease, frontotemporal dementia, cortico-basal degeneration and progressive supranuclear palsy.
Synonyms:	DDPAC; FTDP-17; MAPTL; MSTD; MTBT1; MTBT2; PPND; PPP1R103; TAU
Protein Families:	Druggable Genome



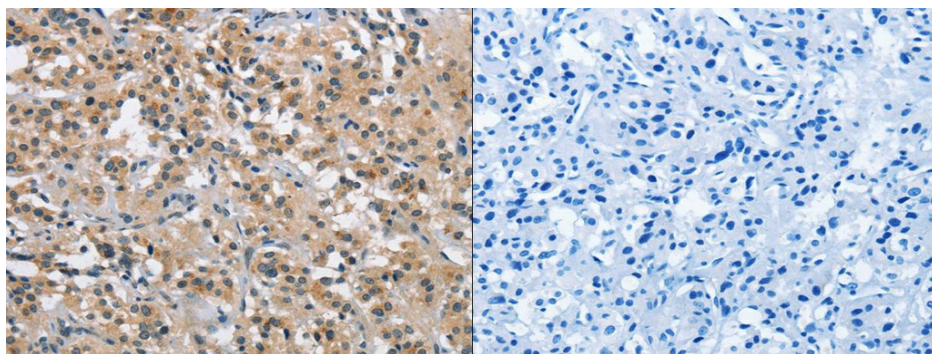
[View online »](#)

Protein Pathways: Alzheimer's disease, MAPK signaling pathway

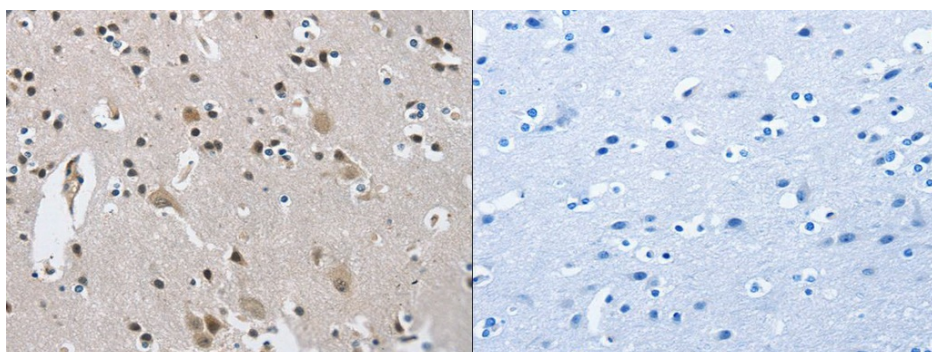
Product images:



Gel: 6%SDS-PAGE, Lysate: 40 ug, Lane 1-3: A172 cells, mouse brain tissue, NIH/3T3 cells, Primary antibody: (MAPT Antibody) at dilution 1/740, Secondary antibody: Goat anti rabbit IgG at 1/8000 dilution, Exposure time: 30 seconds



The image on the left is immunohistochemistry of paraffin-embedded Human thyroid cancer tissue using (MAPT Antibody) at dilution 1/40, on the right is treated with synthetic peptide. (Original magnification: $\times 200$)



The image on the left is immunohistochemistry of paraffin-embedded Human brain tissue using (MAPT Antibody) at dilution 1/40, on the right is treated with synthetic peptide. (Original magnification: $\times 200$)