

Product datasheet for **TA350978S**

SMAD9 Rabbit Polyclonal Antibody

Product data:

| | |
|-------------------------|--|
| Product Type: | Primary Antibodies |
| Applications: | IHC, WB |
| Recommended Dilution: | WB: 200-1000 WB positive control: Mouse heart tissue IHC: 25-100 Positive control: Human thyroid cancer Predicted cell location: Cytoplasm |
| Reactivity: | Human, Mouse |
| Host: | Rabbit |
| Isotype: | IgG |
| Clonality: | Polyclonal |
| Immunogen: | Synthetic peptide of human SMAD9 |
| Formulation: | pH7.4 PBS, 0.05% NaN ₃ , 40% Glycerol |
| Purification: | Antigen affinity purification |
| Conjugation: | Unconjugated |
| Storage: | Store at -20°C as received. |
| Stability: | Stable for 12 months from date of receipt. |
| Predicted Protein Size: | 52 kDa |
| Gene Name: | SMAD family member 9 |
| Database Link: | NP_005896 Entrez Gene 55994 Mouse Entrez Gene 4093 Human O15198 |
| Background: | The protein encoded by this gene is a member of the SMAD family, which transduces signals from TGF-beta family members. The encoded protein is activated by bone morphogenetic proteins and interacts with SMAD4. Two transcript variants encoding different isoforms have been found for this gene. |
| Synonyms: | MADH6; MADH9; PPH2; SMAD8; SMAD8A; SMAD8B |
| Protein Families: | ES Cell Differentiation/IPS, Transcription Factors |



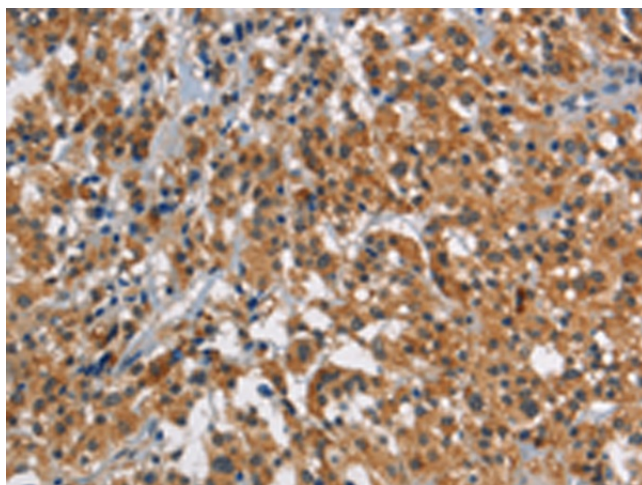
[View online »](#)

Protein Pathways: TGF-beta signaling pathway

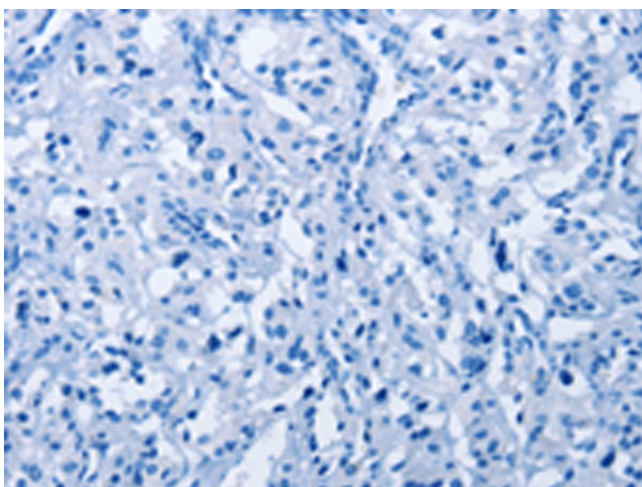
Product images:



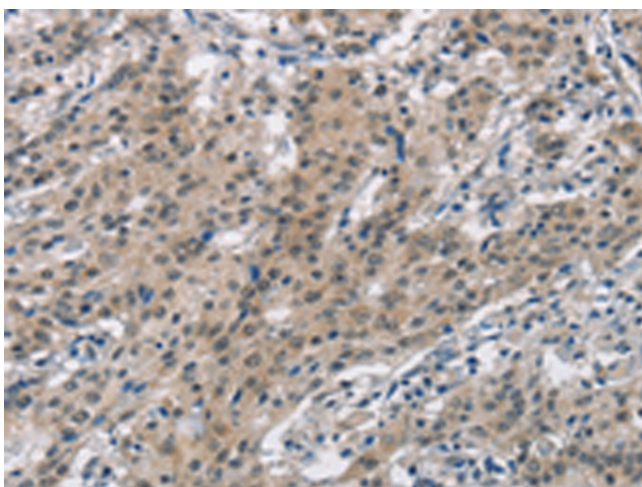
Gel: 8%SDS-PAGE
Lysate: 40 µg
Lane: Mouse heart tissue
Primary antibody: [TA350978] (SMAD9 Antibody)
at dilution 1/290
Secondary antibody: Goat anti rabbit IgG at
1/8000 dilution
Exposure time: 3 minutes



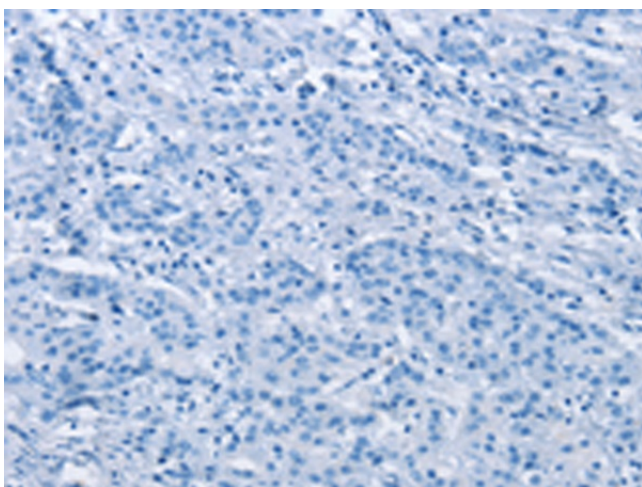
Immunohistochemistry of paraffin-embedded
Human thyroid cancer tissue using [TA350978]
(SMAD9 Antibody) at dilution 1/30 (Original
magnification: ×200)



Immunohistochemistry of paraffin-embedded Human thyroid cancer tissue using [TA350978] (SMAD9 Antibody) at dilution 1/30, treated with synthetic peptide. (Original magnification: ×200)



Immunohistochemistry of paraffin-embedded Human gastric cancer tissue using [TA350978] (SMAD9 Antibody) at dilution 1/30 (Original magnification: ×200)



Immunohistochemistry of paraffin-embedded Human gastric cancer tissue using [TA350978] (SMAD9 Antibody) at dilution 1/30, treated with synthetic peptide. (Original magnification: ×200)