

Product datasheet for **TA350978**

SMAD9 Rabbit Polyclonal Antibody

Product data:

Product Type:	Primary Antibodies
Applications:	IHC, WB
Recommended Dilution:	WB: 200-1000 WB positive control: Mouse heart tissue IHC: 25-100 Positive control: Human thyroid cancer Predicted cell location: Cytoplasm
Reactivity:	Human, Mouse
Host:	Rabbit
Isotype:	IgG
Clonality:	Polyclonal
Immunogen:	Synthetic peptide of human SMAD9
Formulation:	pH7.4 PBS, 0.05% NaN ₃ , 40% Glycerol
Concentration:	lot specific
Purification:	Antigen affinity purification
Conjugation:	Unconjugated
Storage:	Store at -20°C as received.
Stability:	Stable for 12 months from date of receipt.
Predicted Protein Size:	52 kDa
Gene Name:	SMAD family member 9
Database Link:	NP_005896 Entrez Gene 55994 Mouse Entrez Gene 4093 Human O15198
Background:	The protein encoded by this gene is a member of the SMAD family, which transduces signals from TGF-beta family members. The encoded protein is activated by bone morphogenetic proteins and interacts with SMAD4. Two transcript variants encoding different isoforms have been found for this gene.
Synonyms:	MADH6; MADH9; PPH2; SMAD8; SMAD8A; SMAD8B



[View online »](#)

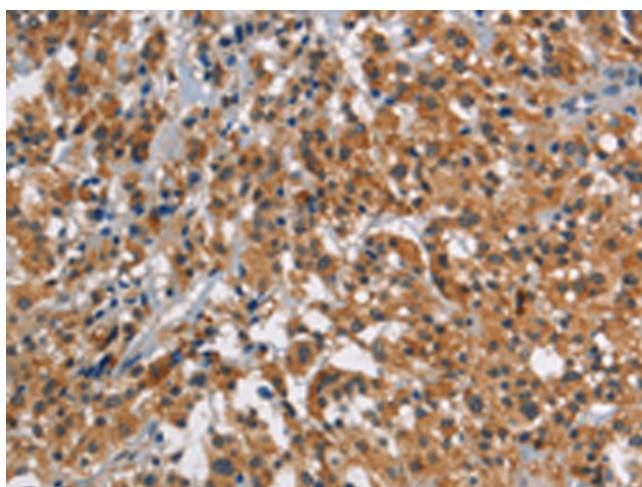
Protein Families: ES Cell Differentiation/IPS, Transcription Factors

Protein Pathways: TGF-beta signaling pathway

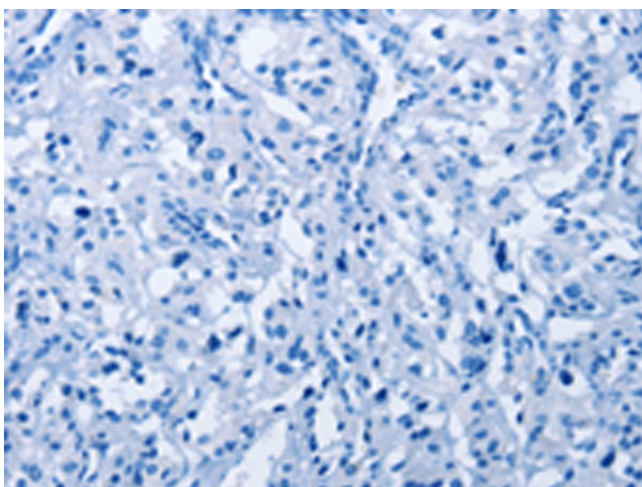
Product images:



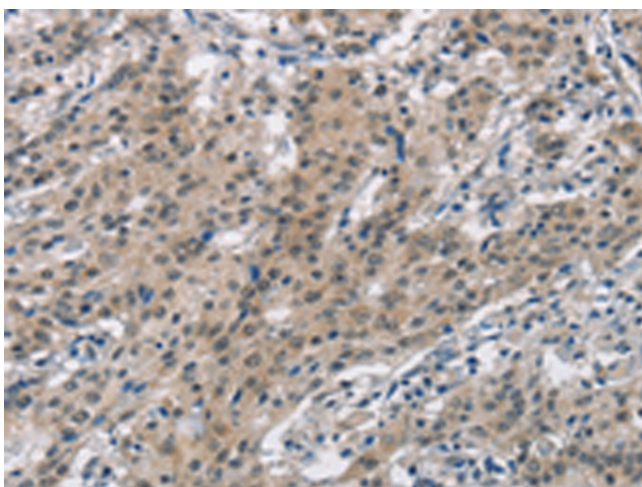
Gel: 8%SDS-PAGE
Lysate: 40 μ g
Lane: Mouse heart tissue
Primary antibody: TA350978 (SMAD9 Antibody) at dilution 1/290
Secondary antibody: Goat anti rabbit IgG at 1/8000 dilution
Exposure time: 3 minutes



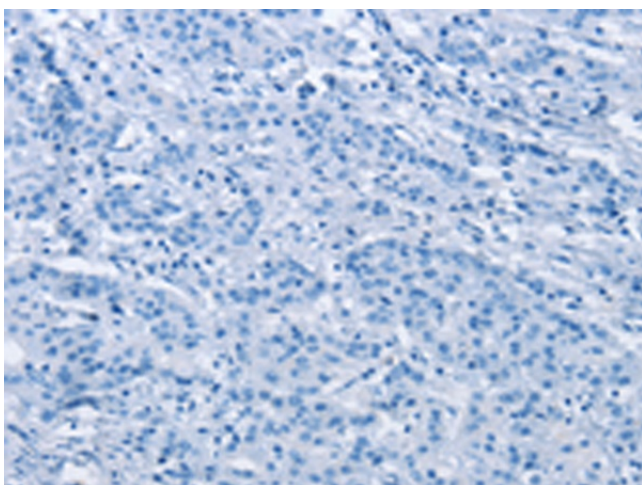
Immunohistochemistry of paraffin-embedded Human thyroid cancer tissue using TA350978 (SMAD9 Antibody) at dilution 1/30 (Original magnification: \times 200)



Immunohistochemistry of paraffin-embedded Human thyroid cancer tissue using TA350978 (SMAD9 Antibody) at dilution 1/30, treated with synthetic peptide. (Original magnification: ×200)



Immunohistochemistry of paraffin-embedded Human gastric cancer tissue using TA350978 (SMAD9 Antibody) at dilution 1/30 (Original magnification: ×200)



Immunohistochemistry of paraffin-embedded Human gastric cancer tissue using TA350978 (SMAD9 Antibody) at dilution 1/30, treated with synthetic peptide. (Original magnification: ×200)