

Product datasheet for **TA350973**

MMP2 Rabbit Polyclonal Antibody

Product data:

| | |
|-----------------------|---|
| Product Type: | Primary Antibodies |
| Applications: | IHC |
| Recommended Dilution: | IHC: 50-200 Positive control: Human gastric cancer Predicted cell location: Cytoplasm |
| Reactivity: | Human, Mouse, Rat |
| Host: | Rabbit |
| Isotype: | IgG |
| Clonality: | Polyclonal |
| Immunogen: | Synthetic peptide of human MMP2 |
| Formulation: | pH7.4 PBS, 0.05% NaN ₃ , 40% Glycerol |
| Concentration: | lot specific |
| Purification: | Antigen affinity purification |
| Conjugation: | Unconjugated |
| Storage: | Store at -20°C as received. |
| Stability: | Stable for 12 months from date of receipt. |
| Gene Name: | matrix metalloproteinase 2 |
| Database Link: | NP_004521 Entrez Gene 17390 Mouse Entrez Gene 81686 Rat Entrez Gene 4313 Human P08253 |

Background: Proteins of the matrix metalloproteinase (MMP) family are involved in the breakdown of extracellular matrix in normal physiological processes, such as embryonic development, reproduction, and tissue remodeling, as well as in disease processes, such as arthritis and metastasis. Most MMP's are secreted as inactive proproteins which are activated when cleaved by extracellular proteinases. This gene encodes an enzyme which degrades type IV collagen, the major structural component of basement membranes. The enzyme plays a role in endometrial menstrual breakdown, regulation of vascularization and the inflammatory response.



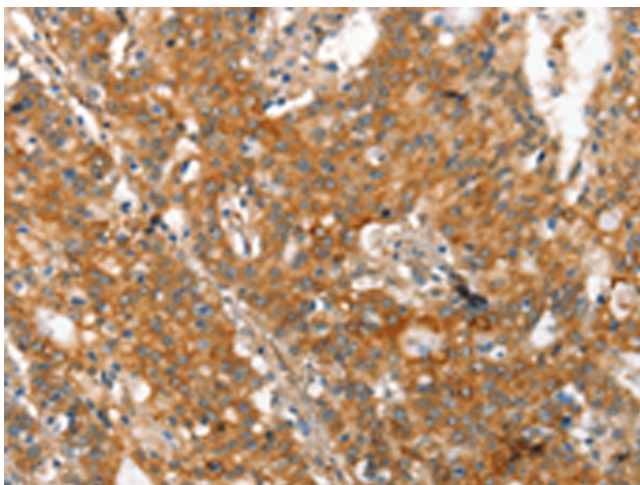
[View online »](#)

Synonyms: CLG4; CLG4A; MMP-2; MMP-II; MONA; TBE-1

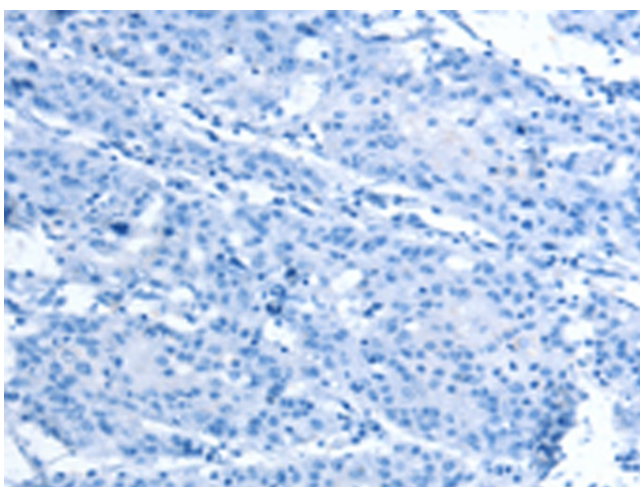
Protein Families: Druggable Genome, Protease

Protein Pathways: Bladder cancer, GnRH signaling pathway, Leukocyte transendothelial migration, Pathways in cancer

Product images:



Immunohistochemistry of paraffin-embedded Human gastric cancer tissue using TA350973 (MMP2 Antibody) at dilution 1/60 (Original magnification: ×200)



Immunohistochemistry of paraffin-embedded Human gastric cancer tissue using TA350973 (MMP2 Antibody) at dilution 1/60, treated with synthetic peptide. (Original magnification: ×200)