

## Product datasheet for **TA350972**

### MMP2 Rabbit Polyclonal Antibody

#### Product data:

Product Type:	Primary Antibodies
Applications:	WB
Recommended Dilution:	ELISA: 1000-5000, WB: 500-1000
Reactivity:	Human, Mouse, Rat
Host:	Rabbit
Isotype:	IgG
Clonality:	Polyclonal
Immunogen:	Synthetic peptide of human MMP2
Formulation:	pH7.4 PBS, 0.05% NaN <sub>3</sub> , 40% Glycerol
Concentration:	lot specific
Purification:	Antigen affinity purification
Conjugation:	Unconjugated
Storage:	Store at -20°C as received.
Stability:	Stable for 12 months from date of receipt.
Predicted Protein Size:	74 kDa; 61 kDa
Gene Name:	matrix metalloproteinase 2
Database Link:	<a href="#">NP_004521</a> <a href="#">Entrez Gene 17390 Mouse</a> <a href="#">Entrez Gene 81686 Rat</a> <a href="#">Entrez Gene 4313 Human</a> <a href="#">P08253</a>



[View online »](#)

**Background:**

Proteins of the matrix metalloproteinase (MMP) family are involved in the breakdown of extracellular matrix in normal physiological processes, such as embryonic development, reproduction, and tissue remodeling, as well as in disease processes, such as arthritis and metastasis. Most MMP's are secreted as inactive proproteins which are activated when cleaved by extracellular proteinases. This gene encodes an enzyme which degrades type IV collagen, the major structural component of basement membranes. The enzyme plays a role in endometrial menstrual breakdown, regulation of vascularization and the inflammatory response. Mutations in this gene have been associated with Winchester syndrome and Nodulosis-Arthropathy-Osteolysis (NAO) syndrome. Two transcript variants encoding different isoforms have been found for this gene.

**Synonyms:**

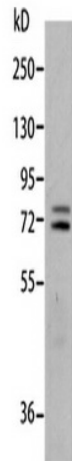
CLG4; CLG4A; MMP-2; MMP-II; MONA; TBE-1

**Protein Families:**

Druggable Genome, Protease

**Protein Pathways:**

Bladder cancer, GnRH signaling pathway, Leukocyte transendothelial migration, Pathways in cancer

**Product images:**

Gel: 10%SDS-PAGE, Lysate: 40 ug, Lane: Mouse liver tissue, Primary antibody: (MMP2 Antibody) at dilution 1/500, Secondary antibody: Goat anti rabbit IgG at 1/8000 dilution, Exposure time: 20 seconds