

Product datasheet for **TA350971**

MMP2 Rabbit Polyclonal Antibody

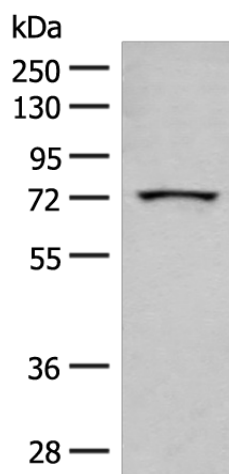
Product data:

Product Type:	Primary Antibodies
Applications:	IHC, WB
Recommended Dilution:	WB: 500-2000 WB positive control: HT-29 cell lysate IHC: 40-200 Positive control: Human cervical cancer Predicted cell location: Cytoplasm and Cell membrane
Reactivity:	Human, Mouse, Rat
Host:	Rabbit
Isotype:	IgG
Clonality:	Polyclonal
Immunogen:	Synthetic peptide of human MMP2
Formulation:	pH7.4 PBS, 0.05% NaN ₃ , 40% Glycerol
Concentration:	lot specific
Purification:	Antigen affinity purification
Conjugation:	Unconjugated
Storage:	Store at -20°C as received.
Stability:	Stable for 12 months from date of receipt.
Gene Name:	matrix metalloproteinase 2
Database Link:	NP_004521 Entrez Gene 17390 Mouse Entrez Gene 81686 Rat Entrez Gene 4313 Human P08253

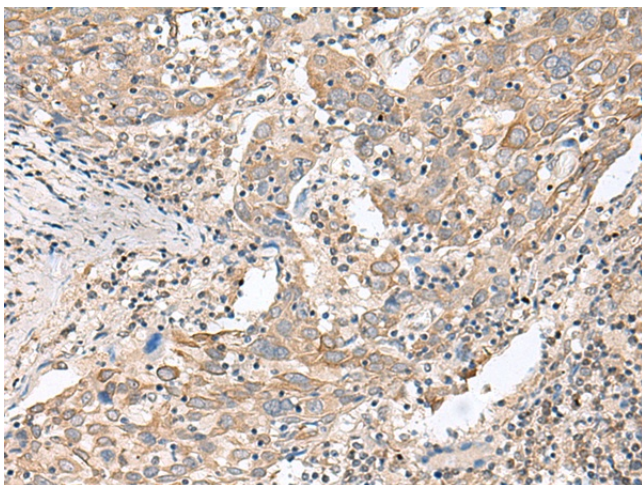


[View online »](#)

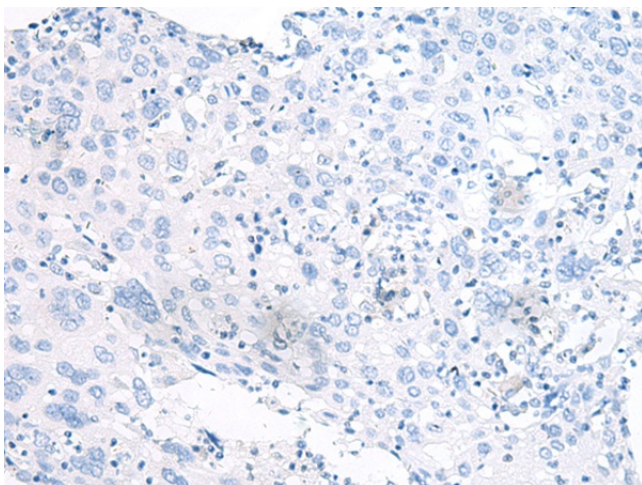
Background:	Proteins of the matrix metalloproteinase (MMP) family are involved in the breakdown of extracellular matrix in normal physiological processes, such as embryonic development, reproduction, and tissue remodeling, as well as in disease processes, such as arthritis and metastasis. Most MMP's are secreted as inactive proproteins which are activated when cleaved by extracellular proteinases. This gene encodes an enzyme which degrades type IV collagen, the major structural component of basement membranes. The enzyme plays a role in endometrial menstrual breakdown, regulation of vascularization and the inflammatory response.
Synonyms:	CLG4; CLG4A; MMP-2; MMP-II; MONA; TBE-1
Protein Families:	Druggable Genome, Protease
Protein Pathways:	Bladder cancer, GnRH signaling pathway, Leukocyte transendothelial migration, Pathways in cancer

Product images:

Gel: 8%SDS-PAGE
Lysate: 40 µg
Lane: HT-29 cell lysate
Primary antibody: TA350971 (MMP2 Antibody) at dilution 1/200
Secondary antibody: Goat anti rabbit IgG at 1/8000 dilution
Exposure time: 1 minute



Immunohistochemistry of paraffin-embedded Human cervical cancer tissue using TA350971 (MMP2 Antibody) at dilution 1/50 (Original magnification: ×200)



Immunohistochemistry of paraffin-embedded Human cervical cancer tissue using TA350971 (MMP2 Antibody) at dilution 1/50, treated with synthetic peptide. (Original magnification: ×200)