

## Product datasheet for **TA350964S**

### epithelial Sodium Channel alpha (SCNN1A) Rabbit Polyclonal Antibody

#### Product data:

Product Type:	Primary Antibodies
Applications:	IHC
Recommended Dilution:	IHC: 25-100 Positive control: Human thyroid cancer Predicted cell location: Cytoplasm
Reactivity:	Human
Host:	Rabbit
Isotype:	IgG
Clonality:	Polyclonal
Immunogen:	Synthetic peptide of human SCNN1A
Formulation:	pH7.4 PBS, 0.05% NaN <sub>3</sub> , 40% Glycerol
Purification:	Antigen affinity purification
Conjugation:	Unconjugated
Storage:	Store at -20°C as received.
Stability:	Stable for 12 months from date of receipt.
Gene Name:	sodium channel epithelial 1 alpha subunit
Database Link:	<a href="#">NP_001029</a> <a href="#">Entrez Gene 6337 Human</a> <a href="#">P37088</a>

**Background:** Nonvoltage-gated, amiloride-sensitive, sodium channels control fluid and electrolyte transport across epithelia in many organs. These channels are heteromeric complexes consisting of 3 subunits: alpha, beta, and gamma. This gene encodes the alpha subunit, and mutations in this gene have been associated with pseudohypoaldosteronism type 1 (PHA1), a rare salt wasting disease resulting from target organ unresponsiveness to mineralocorticoids. Alternatively spliced transcript variants encoding different isoforms have been described for this gene.

**Synonyms:** BESC2; ENaCa; ENaCalpha; SCNEA; SCNN1

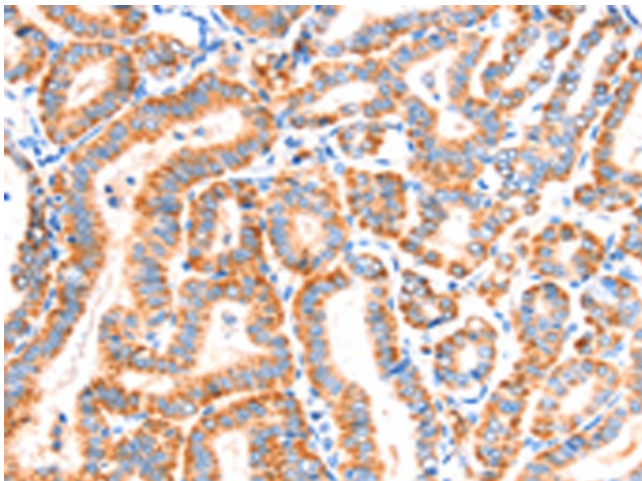
**Protein Families:** Druggable Genome, Ion Channels: Other, Transmembrane



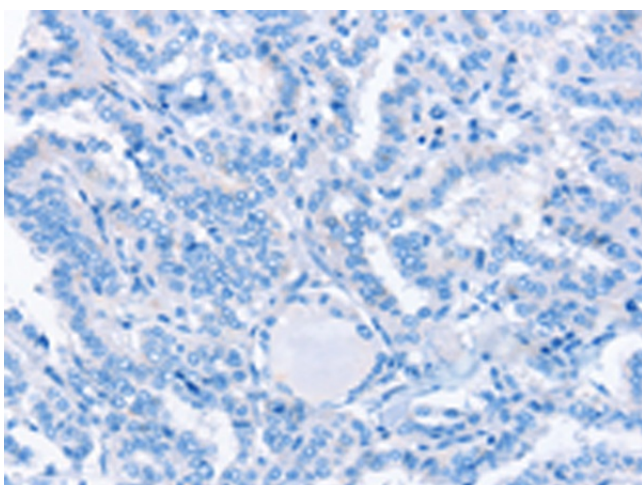
[View online »](#)

Protein Pathways: Taste transduction

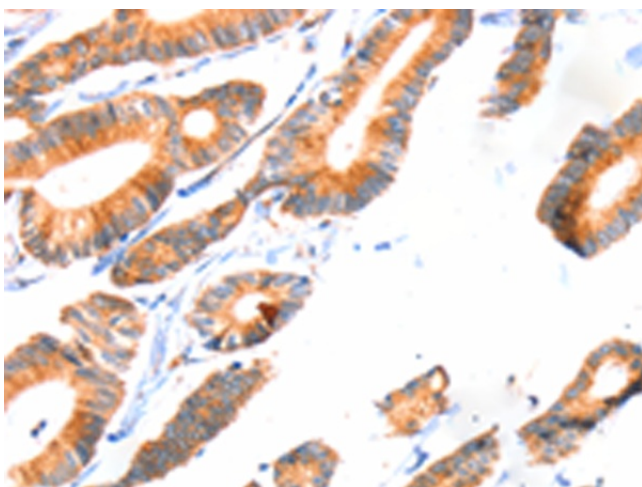
### Product images:



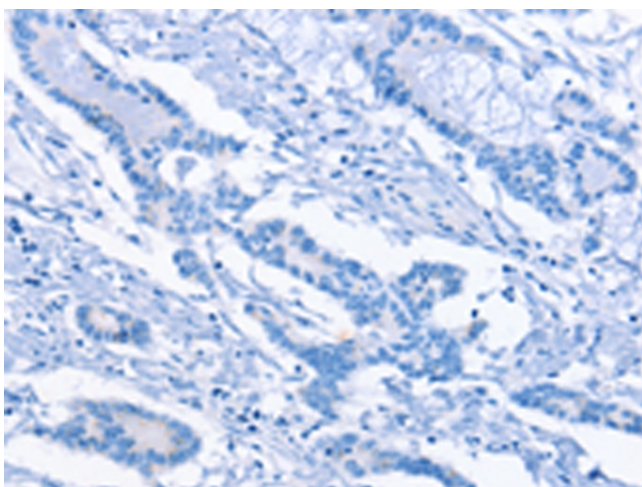
Immunohistochemistry of paraffin-embedded Human thyroid cancer tissue using [TA350964] (SCNN1A Antibody) at dilution 1/30 (Original magnification:  $\times 200$ )



Immunohistochemistry of paraffin-embedded Human thyroid cancer tissue using [TA350964] (SCNN1A Antibody) at dilution 1/30, treated with synthetic peptide. (Original magnification:  $\times 200$ )



Immunohistochemistry of paraffin-embedded Human colon cancer tissue using [TA350964] (SCNN1A Antibody) at dilution 1/30 (Original magnification:  $\times 200$ )



Immunohistochemistry of paraffin-embedded Human colon cancer tissue using [TA350964] (SCNN1A Antibody) at dilution 1/30, treated with synthetic peptide. (Original magnification:  $\times 200$ )