

Product datasheet for **TA350964**

epithelial Sodium Channel alpha (SCNN1A) Rabbit Polyclonal Antibody

Product data:

Product Type:	Primary Antibodies
Applications:	IHC
Recommended Dilution:	IHC: 25-100 Positive control: Human thyroid cancer Predicted cell location: Cytoplasm
Reactivity:	Human
Host:	Rabbit
Isotype:	IgG
Clonality:	Polyclonal
Immunogen:	Synthetic peptide of human SCNN1A
Formulation:	pH7.4 PBS, 0.05% NaN ₃ , 40% Glycerol
Concentration:	lot specific
Purification:	Antigen affinity purification
Conjugation:	Unconjugated
Storage:	Store at -20°C as received.
Stability:	Stable for 12 months from date of receipt.
Gene Name:	sodium channel epithelial 1 alpha subunit
Database Link:	NP_001029 Entrez Gene 6337 Human P37088
Background:	Nonvoltage-gated, amiloride-sensitive, sodium channels control fluid and electrolyte transport across epithelia in many organs. These channels are heteromeric complexes consisting of 3 subunits: alpha, beta, and gamma. This gene encodes the alpha subunit, and mutations in this gene have been associated with pseudohypoaldosteronism type 1 (PHA1), a rare salt wasting disease resulting from target organ unresponsiveness to mineralocorticoids. Alternatively spliced transcript variants encoding different isoforms have been described for this gene.
Synonyms:	BESC2; ENaCa; ENaCalpha; SCNEA; SCNN1

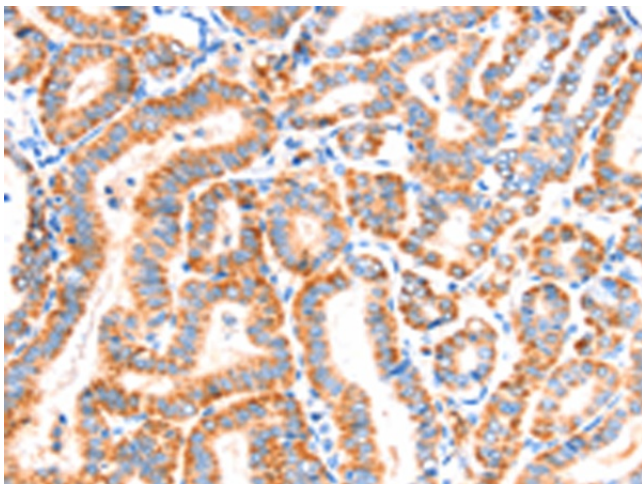


[View online »](#)

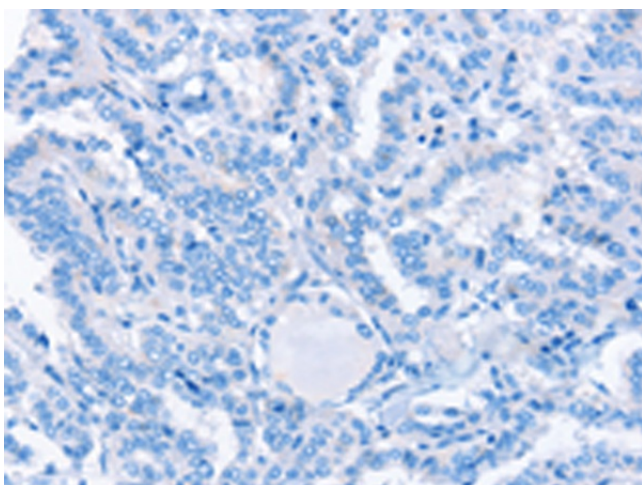
Protein Families: Druggable Genome, Ion Channels: Other, Transmembrane

Protein Pathways: Taste transduction

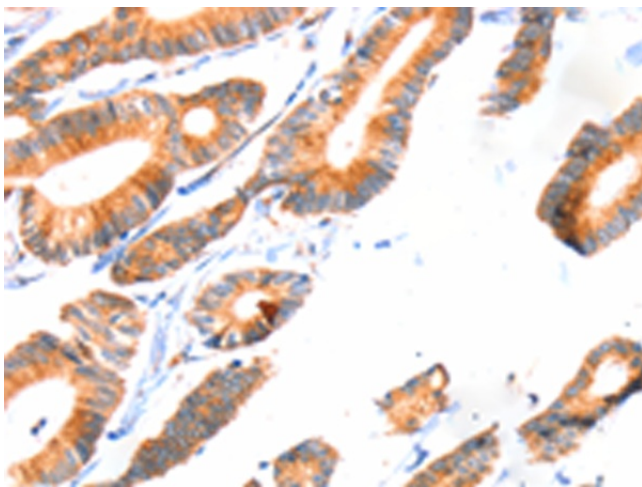
Product images:



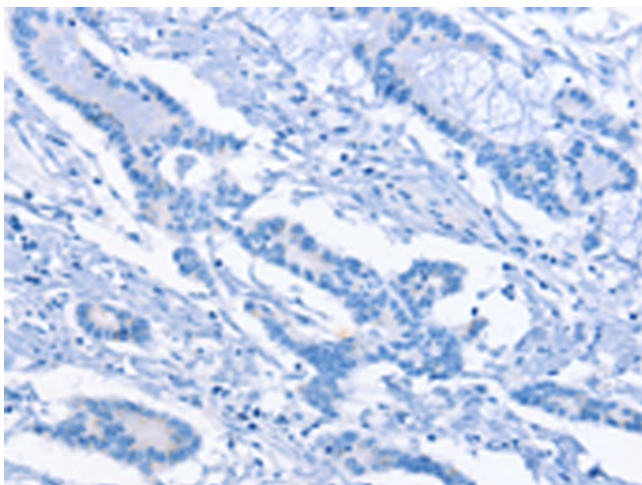
Immunohistochemistry of paraffin-embedded Human thyroid cancer tissue using TA350964 (SCNN1A Antibody) at dilution 1/30 (Original magnification: $\times 200$)



Immunohistochemistry of paraffin-embedded Human thyroid cancer tissue using TA350964 (SCNN1A Antibody) at dilution 1/30, treated with synthetic peptide. (Original magnification: $\times 200$)



Immunohistochemistry of paraffin-embedded Human colon cancer tissue using TA350964 (SCNN1A Antibody) at dilution 1/30 (Original magnification: $\times 200$)



Immunohistochemistry of paraffin-embedded Human colon cancer tissue using TA350964 (SCNN1A Antibody) at dilution 1/30, treated with synthetic peptide. (Original magnification: $\times 200$)