

## Product datasheet for **TA350961S**

### **ALOX15 Rabbit Polyclonal Antibody**

#### **Product data:**

|                                |  |
|--------------------------------|--|
| <b>Product Type:</b>           | Primary Antibodies   |
| <b>Applications:</b>           | IHC, WB  |
| <b>Recommended Dilution:</b>   | WB: 200-1000<br>WB positive control: Hela cell lysate<br>IHC: 50-200<br>Positive control: Human esophagus cancer<br>Predicted cell location: Cytoplasm   |
| <b>Reactivity:</b>             | Human, Mouse, Rat  |
| <b>Host:</b>                   | Rabbit   |
| <b>Isotype:</b>                | IgG  |
| <b>Clonality:</b>              | Polyclonal   |
| <b>Immunogen:</b>              | Synthetic peptide of human ALOX15  |
| <b>Formulation:</b>            | pH7.4 PBS, 0.05% NaN <sub>3</sub> , 40% Glycerol   |
| <b>Purification:</b>           | Antigen affinity purification  |
| <b>Conjugation:</b>            | Unconjugated   |
| <b>Storage:</b>                | Store at -20°C as received.  |
| <b>Stability:</b>              | Stable for 12 months from date of receipt.   |
| <b>Predicted Protein Size:</b> | 75 kDa   |
| <b>Gene Name:</b>              | arachidonate 15-lipoxygenase   |
| <b>Database Link:</b>          | <a href="#">NP_001131</a><br><a href="#">Entrez Gene 11687 MouseEntrez Gene 81639 RatEntrez Gene 246 Human P16050</a>  |
| <b>Background:</b>             | Arachidonate 15-lipoxygenase is an enzyme that in humans is encoded by the ALOX15 gene. The ALOX15 gene maps to 17p13.3 in close proximity to the tumor-suppressor gene TP53. The ALOX15 gene product is implicated in antiinflammation, membrane remodeling, and cancer development/metastasis. Converts arachidonic acid to 15S-hydroperoxyeicosatetraenoic acid. Also acts on C-12 of arachidonate as well as on linoleic acid. |



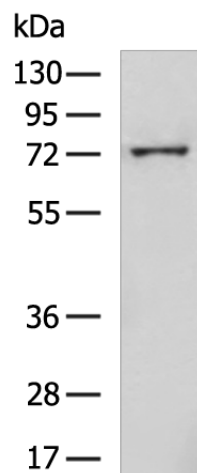
[View online »](#)

**Synonyms:** 12-LOX; 15-LOX-1; 15LOX-1

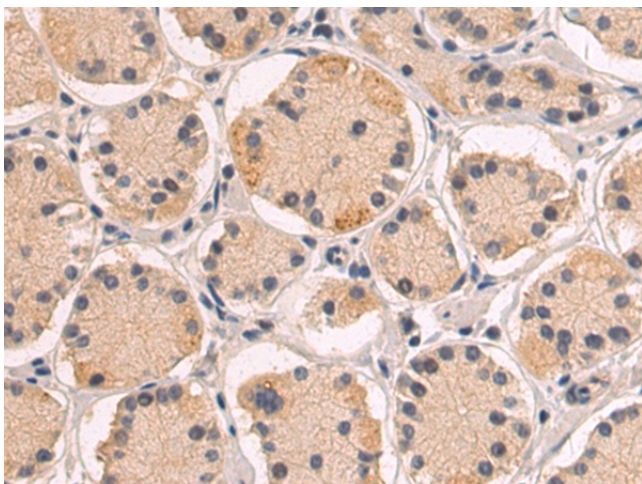
**Protein Families:** Druggable Genome

**Protein Pathways:** Arachidonic acid metabolism, Linoleic acid metabolism, Metabolic pathways

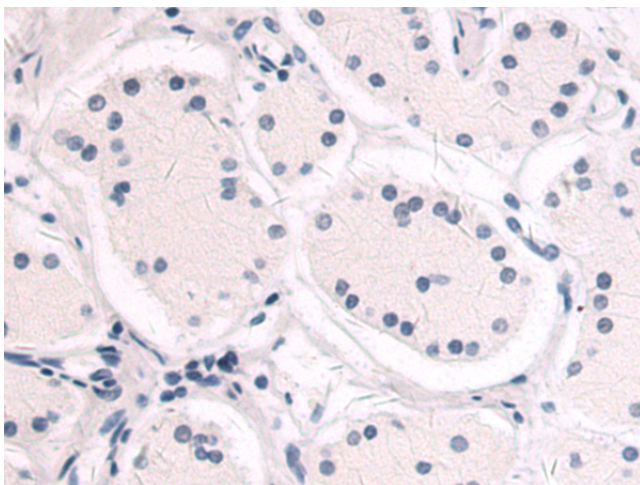
**Product images:**



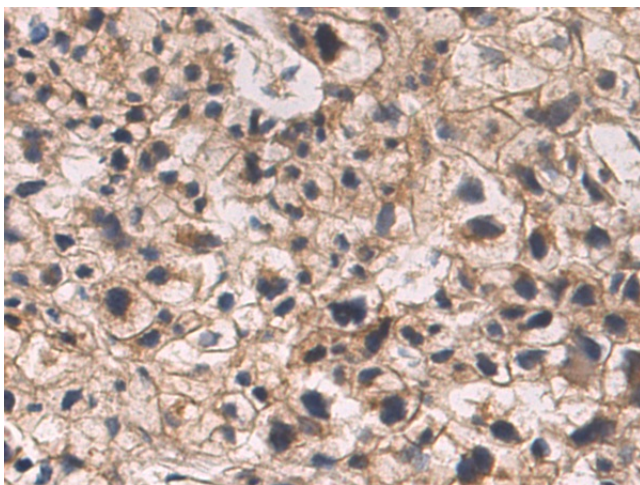
Gel: 8%SDS-PAGE  
Lysate: 40  $\mu$ g  
Lane: HeLa cell lysate  
Primary antibody: [TA350961] (ALOX15 Antibody) at dilution 1/550  
Secondary antibody: Goat anti rabbit IgG at 1/5000 dilution  
Exposure time: 5 minutes



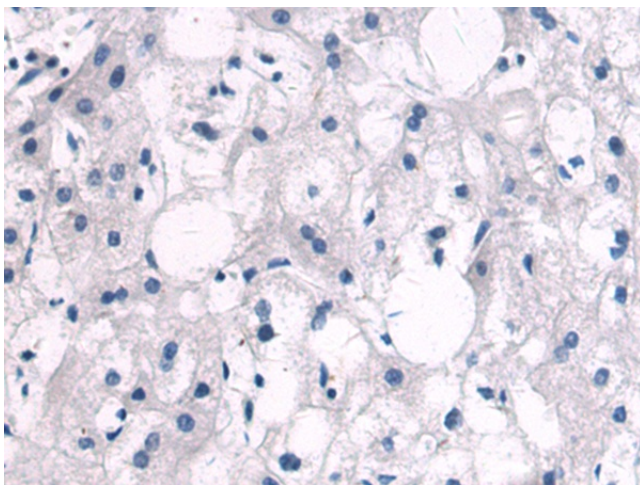
Immunohistochemistry of paraffin-embedded Human esophagus cancer tissue using [TA350961] (ALOX15 Antibody) at dilution 1/50 (Original magnification:  $\times$ 200)



Immunohistochemistry of paraffin-embedded Human esophagus cancer tissue using [TA350961] (ALOX15 Antibody) at dilution 1/50, treated with synthetic peptide. (Original magnification:  $\times 200$ )



Immunohistochemistry of paraffin-embedded Human liver cancer tissue using [TA350961] (ALOX15 Antibody) at dilution 1/50 (Original magnification:  $\times 200$ )



Immunohistochemistry of paraffin-embedded Human liver cancer tissue using [TA350961] (ALOX15 Antibody) at dilution 1/50, treated with synthetic peptide. (Original magnification:  $\times 200$ )