

Product datasheet for **TA350961**

ALOX15 Rabbit Polyclonal Antibody

Product data:

Product Type:	Primary Antibodies
Applications:	IHC, WB
Recommended Dilution:	WB: 200-1000 WB positive control: Hela cell lysate IHC: 50-200 Positive control: Human esophagus cancer Predicted cell location: Cytoplasm
Reactivity:	Human, Mouse, Rat
Host:	Rabbit
Isotype:	IgG
Clonality:	Polyclonal
Immunogen:	Synthetic peptide of human ALOX15
Formulation:	pH7.4 PBS, 0.05% NaN ₃ , 40% Glycerol
Concentration:	lot specific
Purification:	Antigen affinity purification
Conjugation:	Unconjugated
Storage:	Store at -20°C as received.
Stability:	Stable for 12 months from date of receipt.
Predicted Protein Size:	75 kDa
Gene Name:	arachidonate 15-lipoxygenase
Database Link:	NP_001131 Entrez Gene 11687 Mouse Entrez Gene 81639 Rat Entrez Gene 246 Human P16050



[View online »](#)

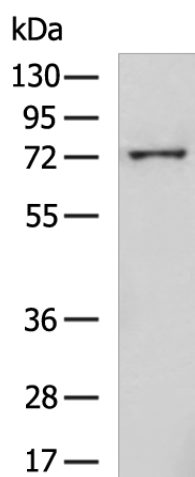
Background: Arachidonate 15-lipoxygenase is an enzyme that in humans is encoded by the ALOX15 gene. The ALOX15 gene maps to 17p13.3 in close proximity to the tumor-suppressor gene TP53. The ALOX15 gene product is implicated in antiinflammation, membrane remodeling, and cancer development/metastasis. Converts arachidonic acid to 15S-hydroperoxyeicosatetraenoic acid. Also acts on C-12 of arachidonate as well as on linoleic acid.

Synonyms: 12-LOX; 15-LOX-1; 15LOX-1

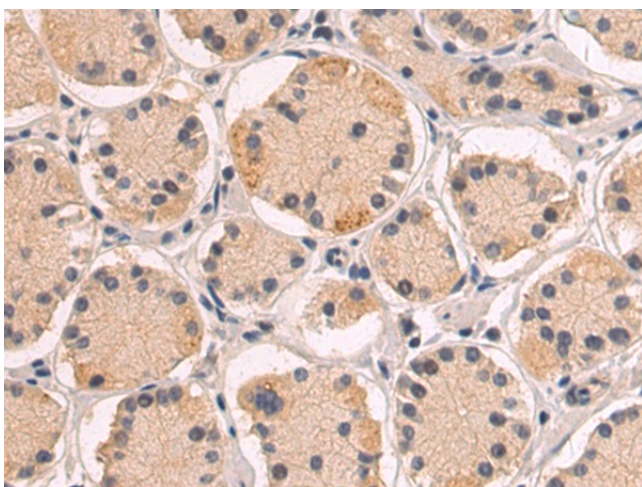
Protein Families: Druggable Genome

Protein Pathways: Arachidonic acid metabolism, Linoleic acid metabolism, Metabolic pathways

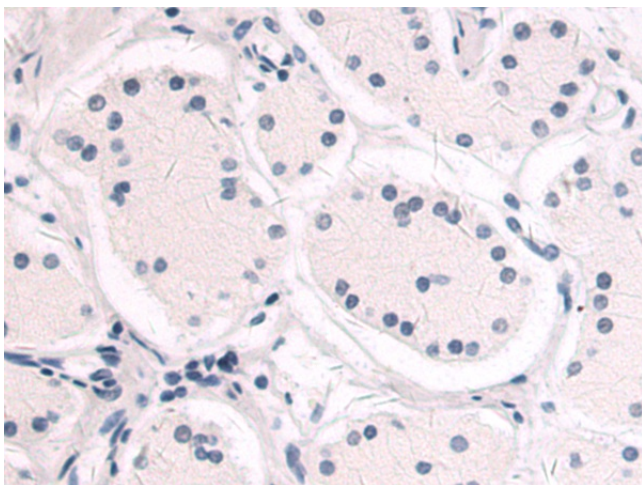
Product images:



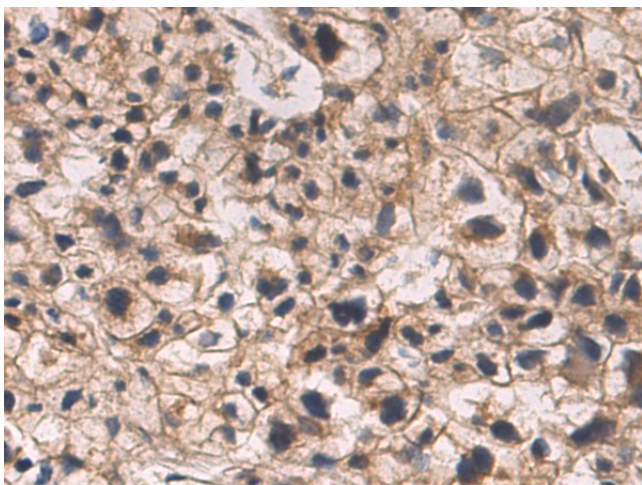
Gel: 8%SDS-PAGE
Lysate: 40 µg
Lane: HeLa cell lysate
Primary antibody: TA350961 (ALOX15 Antibody) at dilution 1/550
Secondary antibody: Goat anti rabbit IgG at 1/5000 dilution
Exposure time: 5 minutes



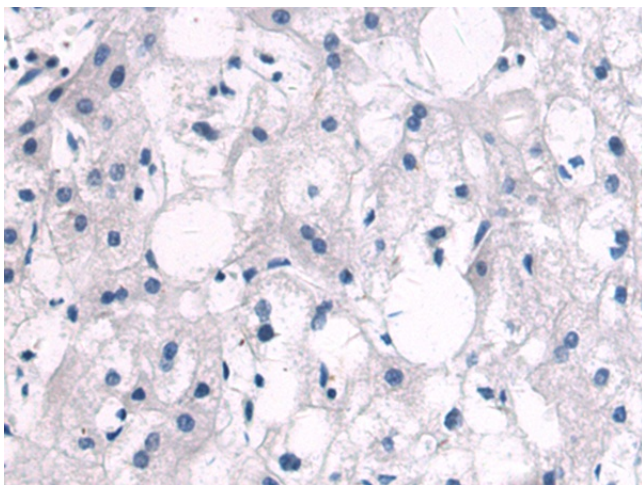
Immunohistochemistry of paraffin-embedded Human esophagus cancer tissue using TA350961 (ALOX15 Antibody) at dilution 1/50 (Original magnification: x200)



Immunohistochemistry of paraffin-embedded Human esophagus cancer tissue using TA350961 (ALOX15 Antibody) at dilution 1/50, treated with synthetic peptide. (Original magnification: ×200)



Immunohistochemistry of paraffin-embedded Human liver cancer tissue using TA350961 (ALOX15 Antibody) at dilution 1/50 (Original magnification: ×200)



Immunohistochemistry of paraffin-embedded Human liver cancer tissue using TA350961 (ALOX15 Antibody) at dilution 1/50, treated with synthetic peptide. (Original magnification: ×200)