

Product datasheet for **TA350959**

Adrenomedullin (ADM) Rabbit Polyclonal Antibody

Product data:

Product Type:	Primary Antibodies
Applications:	IHC, WB
Recommended Dilution:	WB: 500-2000 WB positive control: Mouse kidney tissue, Mouse lung tissue lysates IHC: 50-100 Positive control: Human liver cancer Predicted cell location: Secreted
Reactivity:	Human, Rat, Mouse
Host:	Rabbit
Isotype:	IgG
Clonality:	Polyclonal
Immunogen:	Synthetic peptide of human ADM
Formulation:	pH7.4 PBS, 0.05% NaN ₃ , 40% Glycerol
Concentration:	lot specific
Purification:	Antigen affinity purification
Conjugation:	Unconjugated
Storage:	Store at -20°C as received.
Stability:	Stable for 12 months from date of receipt.
Predicted Protein Size:	20 kDa
Gene Name:	adrenomedullin
Database Link:	NP_001115 Entrez Gene 11535 Mouse Entrez Gene 25026 Rat Entrez Gene 133 Human P35318



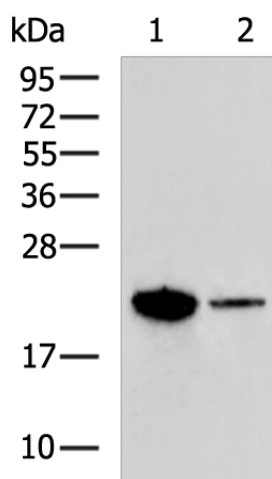
[View online »](#)

Background: Adrenomedullin, a hypotensive peptide found in human pheochromocytoma, consists of 52 amino acids, has 1 intramolecular disulfide bond, and shows a slight homology with the calcitonin gene-related peptide. It may function as a hormone in circulation control because it is found in blood in a considerable concentration. The precursor, called preproadrenomedullin, is 185 amino acids long. By RNA-blot analysis, human adrenomedullin mRNA was found to be highly expressed in several tissues.

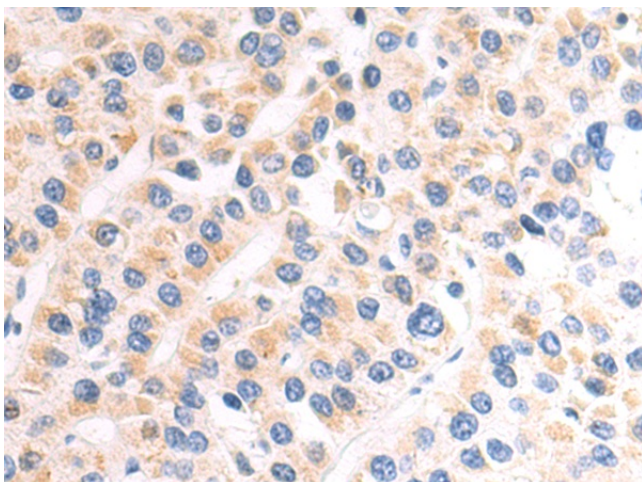
Synonyms: AM; PAMP

Protein Families: Druggable Genome, Secreted Protein

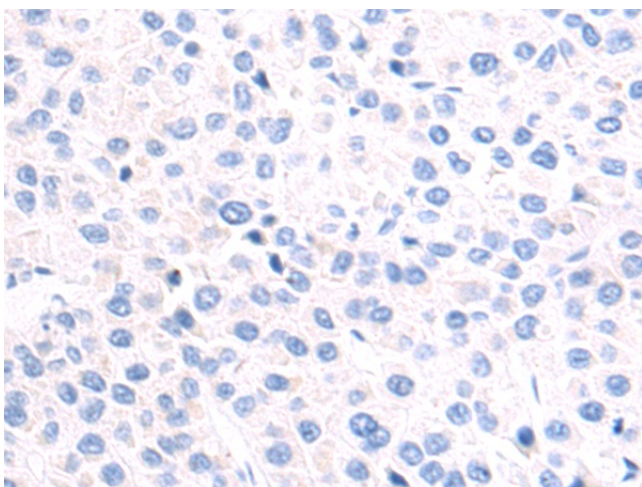
Product images:



Gel: 12%SDS-PAGE
Lysate: 40 μ g
Lane 1-2: Mouse kidney tissue
Mouse lung tissue lysates
Primary antibody: TA350959 (ADM Antibody) at dilution 1/400
Secondary antibody: Goat anti rabbit IgG at 1/5000 dilution
Exposure time: 5 minutes



Immunohistochemistry of paraffin-embedded Human liver cancer tissue using TA350959 (ADM Antibody) at dilution 1/50 (Original magnification: $\times 200$)



Immunohistochemistry of paraffin-embedded Human liver cancer tissue using TA350959 (ADM Antibody) at dilution 1/50, treated with synthetic peptide. (Original magnification: $\times 200$)