

## Product datasheet for **TA350958**

### alpha smooth muscle Actin (ACTA2) Rabbit Polyclonal Antibody

#### Product data:

Product Type:	Primary Antibodies
Applications:	IHC, WB
Recommended Dilution:	WB: 1000-5000 WB positive control: Mouse heart tissue IHC: 50-200 Positive control: Human thyroid cancer Predicted cell location: Cytoplasm
Reactivity:	Human, Mouse, Rat
Host:	Rabbit
Isotype:	IgG
Clonality:	Polyclonal
Immunogen:	Synthetic peptide of human ACTA2
Formulation:	pH7.4 PBS, 0.05% NaN <sub>3</sub> , 40% Glycerol
Concentration:	lot specific
Purification:	Antigen affinity purification
Conjugation:	Unconjugated
Storage:	Store at -20°C as received.
Stability:	Stable for 12 months from date of receipt.
Predicted Protein Size:	42 kDa
Gene Name:	actin, alpha 2, smooth muscle, aorta
Database Link:	<a href="#">NP_001604</a> <a href="#">Entrez Gene 11475 Mouse</a> <a href="#">Entrez Gene 81633 Rat</a> <a href="#">Entrez Gene 59 Human</a> <a href="#">P62736</a>



[View online »](#)

**Background:**

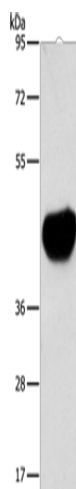
The protein encoded by this gene belongs to the actin family of proteins, which are highly conserved proteins that play a role in cell motility, structure and integrity. Alpha, beta and gamma actin isoforms have been identified, with alpha actins being a major constituent of the contractile apparatus, while beta and gamma actins are involved in the regulation of cell motility. This actin is an alpha actin that is found in skeletal muscle. Defects in this gene cause aortic aneurysm familial thoracic type 6. Multiple alternatively spliced variants, encoding the same protein, have been identified.

**Synonyms:**

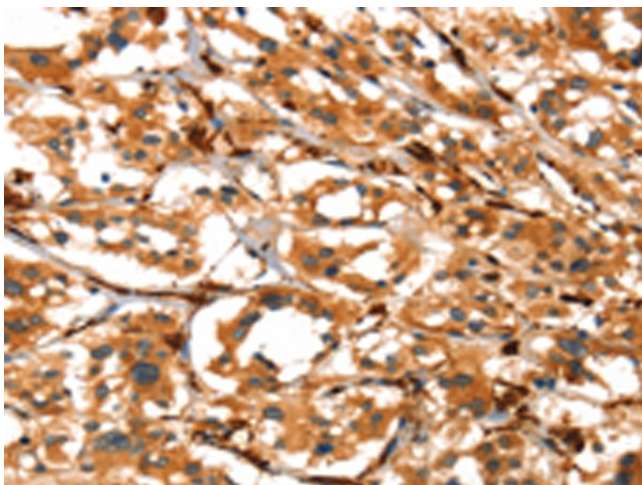
AAT6; ACTSA; MYMY5

**Protein Pathways:**

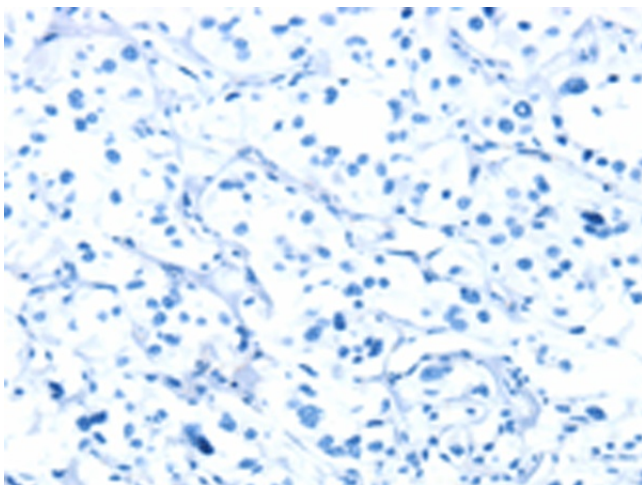
Vascular smooth muscle contraction

**Product images:**

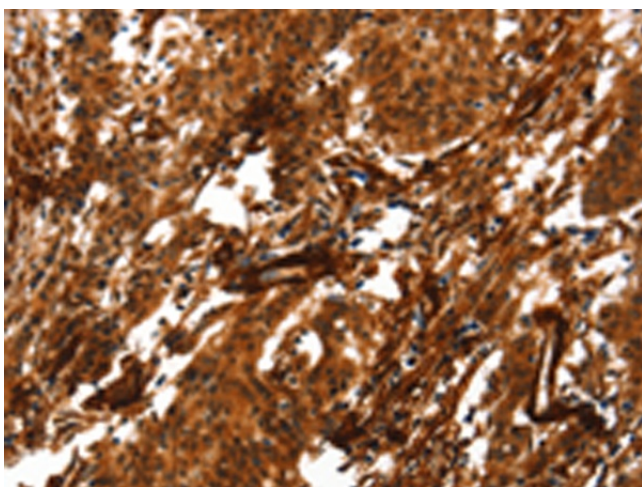
Gel: 8%SDS-PAGE  
Lysate: 40  $\mu$ g  
Lane: Mouse heart tissue  
Primary antibody: TA350958 (ACTA2 Antibody) at dilution 1/800  
Secondary antibody: Goat anti rabbit IgG at 1/8000 dilution  
Exposure time: 1 minute



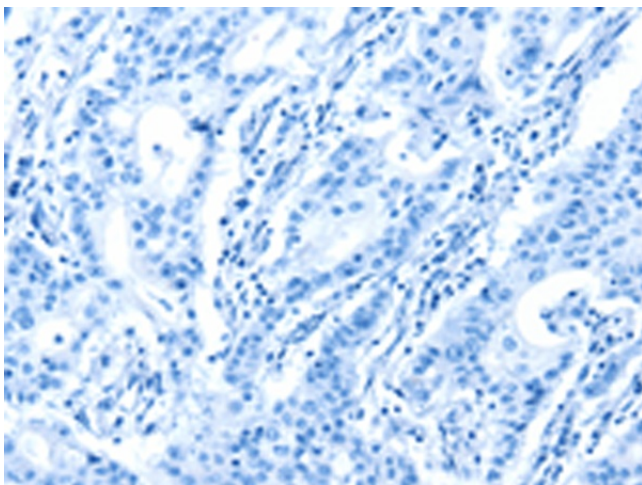
Immunohistochemistry of paraffin-embedded Human thyroid cancer tissue using TA350958 (ACTA2 Antibody) at dilution 1/40 (Original magnification:  $\times$ 200)



Immunohistochemistry of paraffin-embedded Human thyroid cancer tissue using TA350958 (ACTA2 Antibody) at dilution 1/40, treated with synthetic peptide. (Original magnification:  $\times 200$ )



Immunohistochemistry of paraffin-embedded Human gastric cancer tissue using TA350958 (ACTA2 Antibody) at dilution 1/40 (Original magnification:  $\times 200$ )



Immunohistochemistry of paraffin-embedded Human gastric cancer tissue using TA350958 (ACTA2 Antibody) at dilution 1/40, treated with synthetic peptide. (Original magnification:  $\times 200$ )