

## Product datasheet for **TA350957S**

### A4GALT Rabbit Polyclonal Antibody

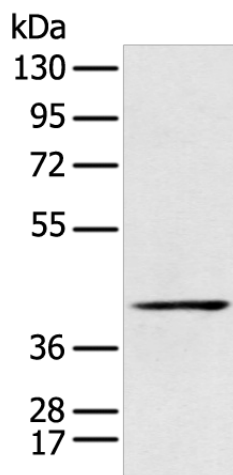
#### Product data:

Product Type:	Primary Antibodies
Applications:	IHC, WB
Recommended Dilution:	WB: 500-2000 WB positive control: Raji cell IHC: 15-50 Positive control: Human thyroid cancer Predicted cell location: cytoplasm
Reactivity:	Human, Rat
Host:	Rabbit
Isotype:	IgG
Clonality:	Polyclonal
Immunogen:	Synthetic peptide of human A4GALT
Formulation:	pH7.4 PBS, 0.05% NaN <sub>3</sub> , 40% Glycerol
Purification:	Antigen affinity purification
Conjugation:	Unconjugated
Storage:	Store at -20°C as received.
Stability:	Stable for 12 months from date of receipt.
Gene Name:	alpha 1,4-galactosyltransferase
Database Link:	<a href="#">NP_059132</a> <a href="#">Entrez Gene 63888 Rat</a> <a href="#">Entrez Gene 53947 Human</a> <a href="#">Q9NPC4</a>
Background:	The protein encoded by this gene catalyzes the transfer of galactose to lactosylceramide to form globotriaosylceramide, which has been identified as the P(k) antigen of the P blood group system. The encoded protein, which is a type II membrane protein found in the Golgi, is also required for the synthesis of the bacterial verotoxins receptor.
Synonyms:	A4GALT1; A14GALT; Gb3S; P(k); P1; P1PK; PK
Protein Families:	Druggable Genome, Transmembrane
Protein Pathways:	Glycosphingolipid biosynthesis - globo series, Metabolic pathways

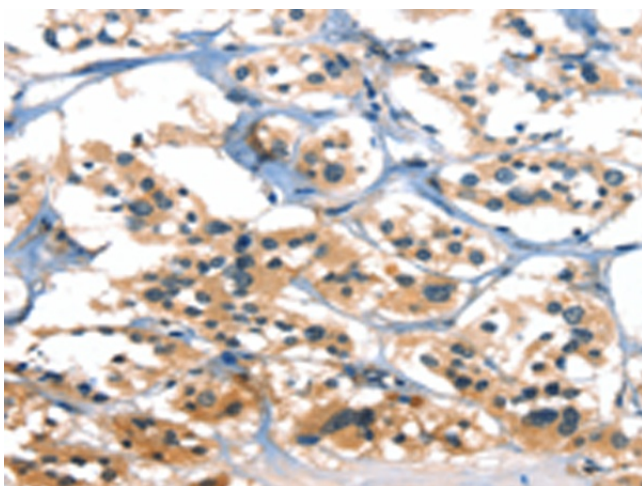


[View online »](#)

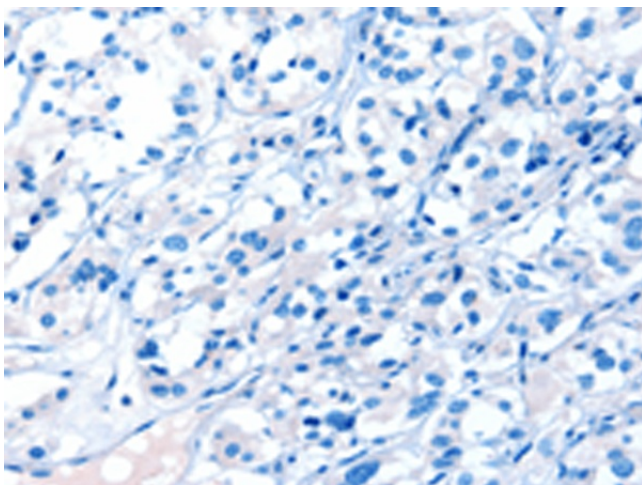
## Product images:



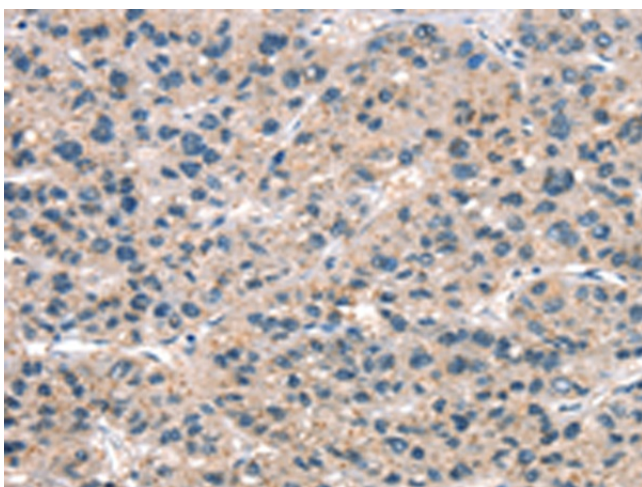
Gel: 8%SDS-PAGE  
Lysate: 40  $\mu$ g  
Lane: Raji cell  
Primary antibody: [TA350957] (A4GALT Antibody) at dilution 1/400  
Secondary antibody: Goat anti rabbit IgG at 1/8000 dilution  
Exposure time: 1 minute



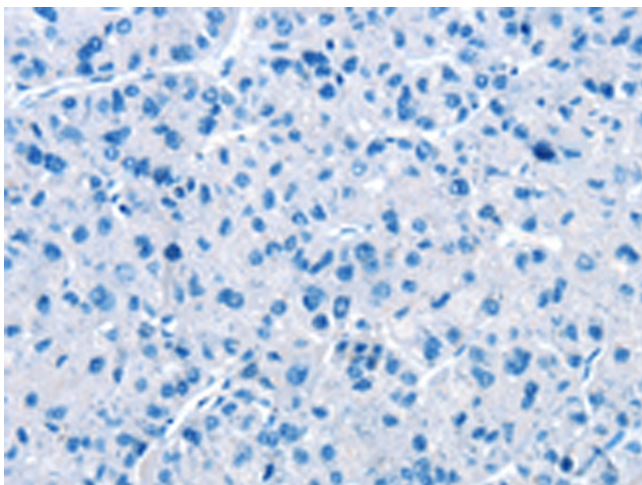
Immunohistochemistry of paraffin-embedded Human thyroid cancer tissue using [TA350957] (A4GALT Antibody) at dilution 1/30 (Original magnification:  $\times$ 200)



Immunohistochemistry of paraffin-embedded Human thyroid cancer tissue using [TA350957] (A4GALT Antibody) at dilution 1/30, treated with synthetic peptide. (Original magnification: ×200)



Immunohistochemistry of paraffin-embedded Human liver cancer tissue using [TA350957] (A4GALT Antibody) at dilution 1/30 (Original magnification: ×200)



Immunohistochemistry of paraffin-embedded Human liver cancer tissue using [TA350957] (A4GALT Antibody) at dilution 1/30, treated with synthetic peptide. (Original magnification: ×200)