

Product datasheet for **TA350957**

A4GALT Rabbit Polyclonal Antibody

Product data:

Product Type:	Primary Antibodies
Applications:	IHC, WB
Recommended Dilution:	WB: 500-2000 WB positive control: Raji cell IHC: 15-50 Positive control: Human thyroid cancer Predicted cell location: cytoplasm
Reactivity:	Human, Rat
Host:	Rabbit
Isotype:	IgG
Clonality:	Polyclonal
Immunogen:	Synthetic peptide of human A4GALT
Formulation:	pH7.4 PBS, 0.05% NaN ₃ , 40% Glycerol
Concentration:	lot specific
Purification:	Antigen affinity purification
Conjugation:	Unconjugated
Storage:	Store at -20°C as received.
Stability:	Stable for 12 months from date of receipt.
Gene Name:	alpha 1,4-galactosyltransferase
Database Link:	NP_059132 Entrez Gene 63888 Rat Entrez Gene 53947 Human Q9NPC4

Background: The protein encoded by this gene catalyzes the transfer of galactose to lactosylceramide to form globotriaosylceramide, which has been identified as the P(k) antigen of the P blood group system. The encoded protein, which is a type II membrane protein found in the Golgi, is also required for the synthesis of the bacterial verotoxins receptor.

Synonyms: A4GALT1; A14GALT; Gb3S; P(k); P1; P1PK; PK

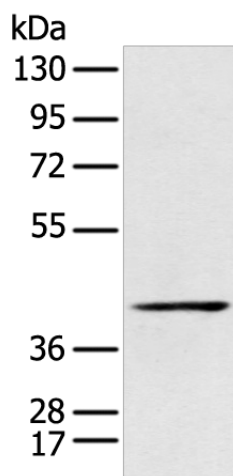
Protein Families: Druggable Genome, Transmembrane



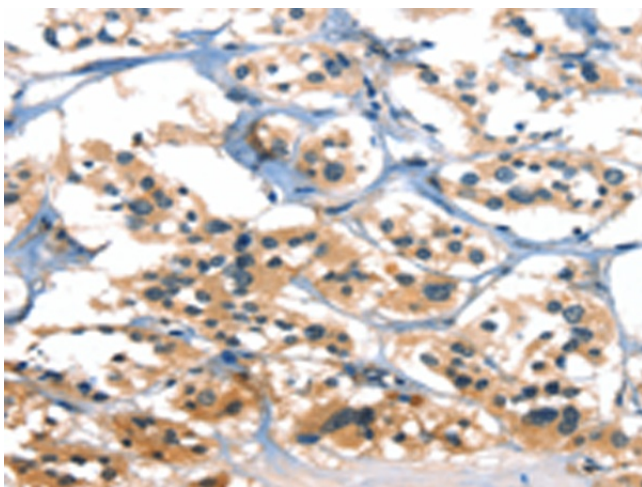
[View online »](#)

Protein Pathways: Glycosphingolipid biosynthesis - globo series, Metabolic pathways

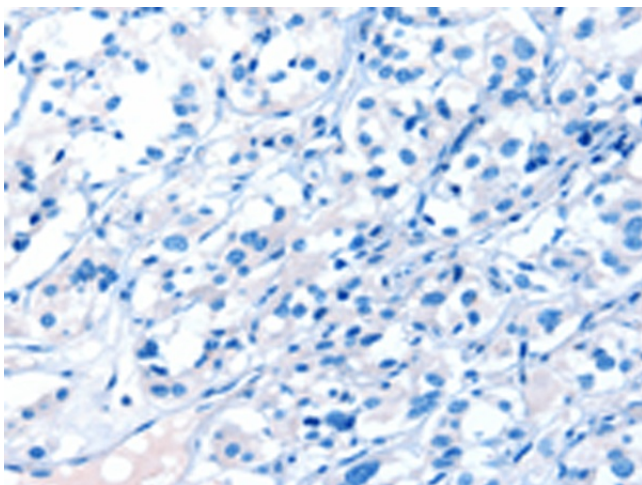
Product images:



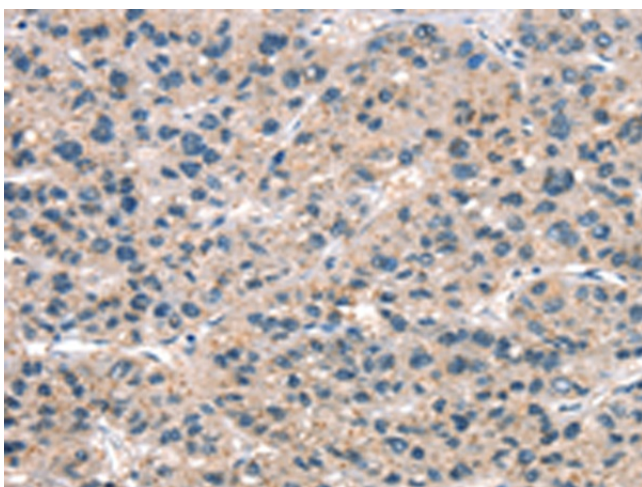
Gel: 8%SDS-PAGE
Lysate: 40 μ g
Lane: Raji cell
Primary antibody: TA350957 (A4GALT Antibody) at dilution 1/400
Secondary antibody: Goat anti rabbit IgG at 1/8000 dilution
Exposure time: 1 minute



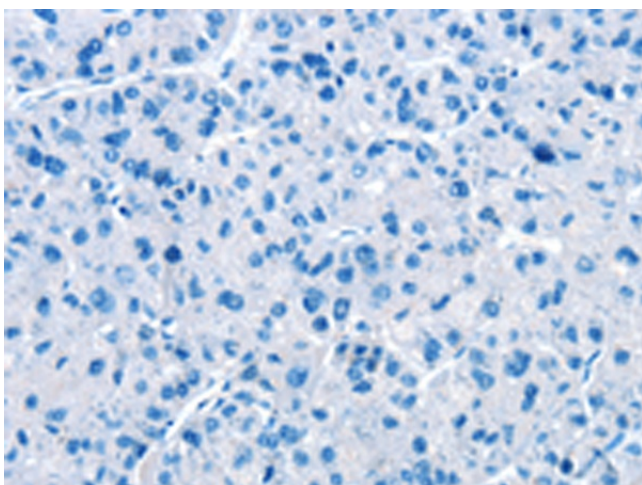
Immunohistochemistry of paraffin-embedded Human thyroid cancer tissue using TA350957 (A4GALT Antibody) at dilution 1/30 (Original magnification: \times 200)



Immunohistochemistry of paraffin-embedded Human thyroid cancer tissue using TA350957 (A4GALT Antibody) at dilution 1/30, treated with synthetic peptide. (Original magnification: x200)



Immunohistochemistry of paraffin-embedded Human liver cancer tissue using TA350957 (A4GALT Antibody) at dilution 1/30 (Original magnification: x200)



Immunohistochemistry of paraffin-embedded Human liver cancer tissue using TA350957 (A4GALT Antibody) at dilution 1/30, treated with synthetic peptide. (Original magnification: x200)