

Product datasheet for **TA350951**

Caveolin 1 (CAV1) Rabbit Polyclonal Antibody

Product data:

Product Type:	Primary Antibodies
Applications:	IHC, WB
Recommended Dilution:	WB: 1000-5000 WB positive control: Human fetal muscle and fetal lung tissue, Human leiomyosarcoma tissue, mouse lung and heart tissue, NIH/3T3 cells IHC: 50-200 Positive control: Human esophagus cancer Predicted cell location: Cytoplasm
Reactivity:	Human, Mouse, Rat
Host:	Rabbit
Isotype:	IgG
Clonality:	Polyclonal
Immunogen:	Synthetic peptide of human CAV1
Formulation:	pH7.4 PBS, 0.05% NaN ₃ , 40% Glycerol
Concentration:	lot specific
Purification:	Antigen affinity purification
Conjugation:	Unconjugated
Storage:	Store at -20°C as received.
Stability:	Stable for 12 months from date of receipt.
Predicted Protein Size:	20 kDa
Gene Name:	caveolin 1
Database Link:	NP_001744 Entrez Gene 12389 Mouse Entrez Gene 25404 Rat Entrez Gene 857 Human Q03135



[View online »](#)

Background:

The scaffolding protein encoded by this gene is the main component of the caveolae plasma membranes found in most cell types. The protein links integrin subunits to the tyrosine kinase FYN, an initiating step in coupling integrins to the Ras-ERK pathway and promoting cell cycle progression. The gene is a tumor suppressor gene candidate and a negative regulator of the Ras-p42/44 mitogen-activated kinase cascade. Caveolin 1 and caveolin 2 are located next to each other on chromosome 7 and express colocalizing proteins that form a stable hetero-oligomeric complex. Mutations in this gene have been associated with Berardinelli-Seip congenital lipodystrophy. Alternatively spliced transcripts encode alpha and beta isoforms of caveolin 1.

Synonyms:

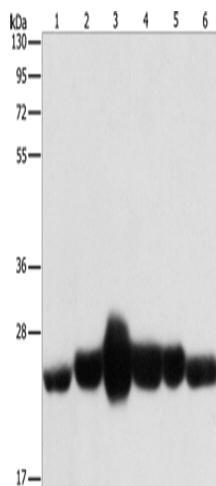
BSCL3; CGL3; LCCNS; MSTP085; PPH3; VIP21

Protein Families:

Druggable Genome, Transmembrane

Protein Pathways:

Focal adhesion, Viral myocarditis

Product images:

Gel: 10%SDS-PAGE

Lysate: 40 µg

Lane 1-6: Human fetal muscle tissue

Human fetal lung tissue

Human leiomyosarcoma tissue

mouse lung

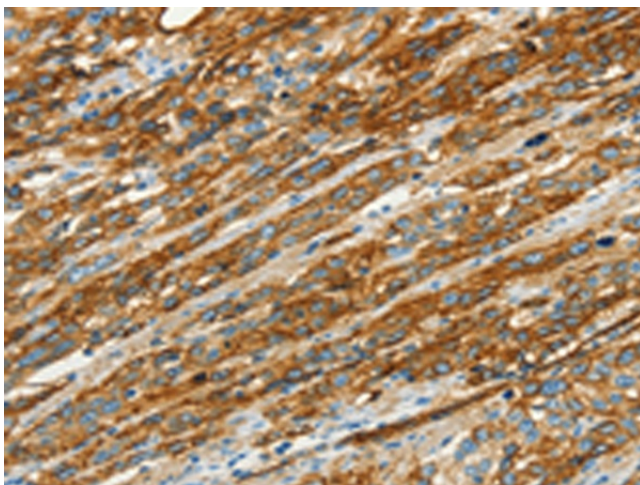
Mouse heart tissue

NIH/3T3 cells

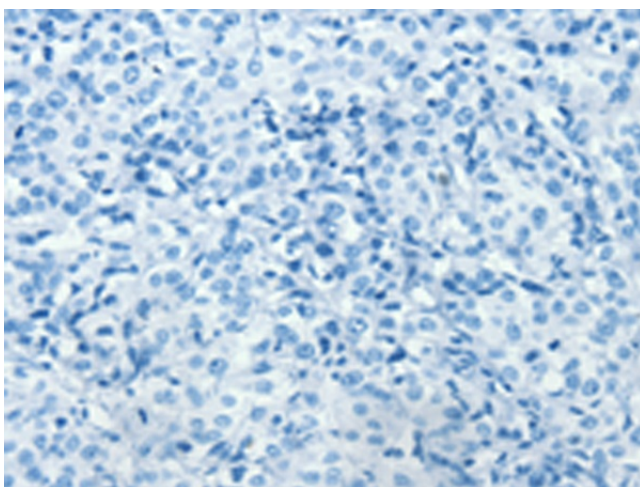
Primary antibody: TA350951 (CAV1 Antibody) at dilution 1/550

Secondary antibody: Goat anti rabbit IgG at 1/8000 dilution

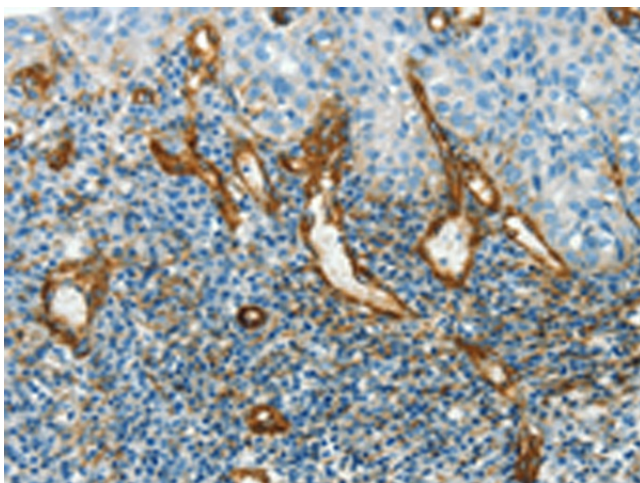
Exposure time: 10 seconds



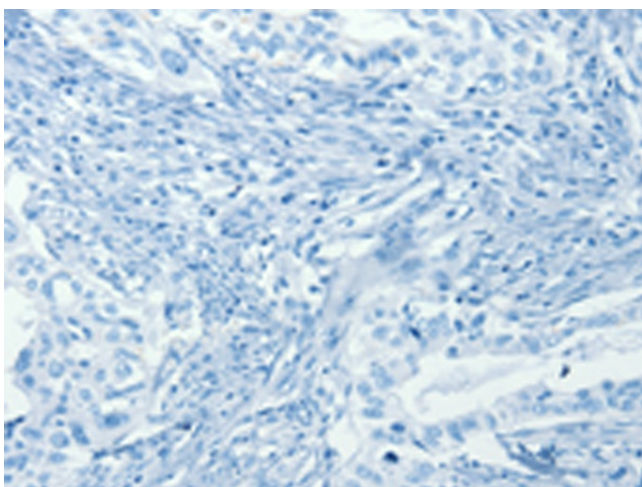
Immunohistochemistry of paraffin-embedded Human esophagus cancer tissue using TA350951 (CAV1 Antibody) at dilution 1/40 (Original magnification: $\times 200$)



Immunohistochemistry of paraffin-embedded Human esophagus cancer tissue using TA350951 (CAV1 Antibody) at dilution 1/40, treated with synthetic peptide. (Original magnification: $\times 200$)



Immunohistochemistry of paraffin-embedded Human cervical cancer tissue using TA350951 (CAV1 Antibody) at dilution 1/40 (Original magnification: $\times 200$)



Immunohistochemistry of paraffin-embedded Human cervical cancer tissue using TA350951 (CAV1 Antibody) at dilution 1/40, treated with synthetic peptide. (Original magnification: ×200)