

Product datasheet for **TA350949**

ASCC2 Rabbit Polyclonal Antibody

Product data:

Product Type:	Primary Antibodies
Applications:	WB
Recommended Dilution:	WB: 500-2000 WB positive control: A431, 293T and hela cells
Reactivity:	Human, Mouse
Host:	Rabbit
Isotype:	IgG
Clonality:	Polyclonal
Immunogen:	Synthetic peptide of human ASCC2
Formulation:	pH7.4 PBS, 0.05% NaN ₃ , 40% Glycerol
Concentration:	lot specific
Purification:	Antigen affinity purification
Conjugation:	Unconjugated
Storage:	Store at -20°C as received.
Stability:	Stable for 12 months from date of receipt.
Predicted Protein Size:	86 kDa
Gene Name:	activating signal cointegrator 1 complex subunit 2
Database Link:	NP_115580 Entrez Gene 84164 Human Q9H118



[View online »](#)

Background:

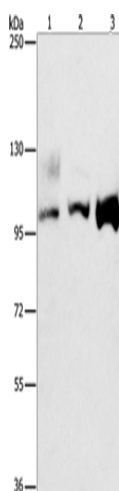
ASCC2 (activating signal cointegrator 1 complex subunit 2), also known as ASC1P100, is a 757 amino acid protein that is ubiquitously expressed and contains one CUE domain. The gene encoding ASCC2 maps to human chromosome 22, which houses over 500 genes and is the second smallest human chromosome. Mutations in several of the genes that map to chromosome 22 are involved in the development of Phelan-McDermid syndrome, Neurofibromatosis type 2, autism and schizophrenia. Additionally, translocations between chromosomes 9 and 22 may lead to the formation of the Philadelphia Chromosome and the subsequent production of the novel fusion protein BCR-Abl, a potent cell proliferation activator found in several types of leukemias.

Synonyms:

ASC1p100; p100

Protein Families:

Druggable Genome, Transcription Factors

Product images:

Gel: 8%SDS-PAGE
Lysate: 40 µg
Lane 1-3: A431 cells
293T cells
hela cells
Primary antibody: TA350949 (ASCC2 Antibody) at dilution 1/500
Secondary antibody: Goat anti rabbit IgG at 1/8000 dilution
Exposure time: 30 seconds