

## Product datasheet for **TA350945S**

### STK39 Rabbit Polyclonal Antibody

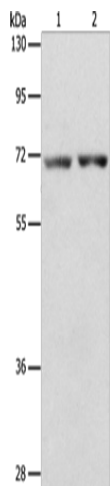
#### Product data:

Product Type:	Primary Antibodies
Applications:	WB
Recommended Dilution:	WB: 500-2000 WB positive control: Human liver cancer and colon cancer tissue
Reactivity:	Human, Mouse, Rat
Host:	Rabbit
Isotype:	IgG
Clonality:	Polyclonal
Immunogen:	Synthetic peptide of human STK39
Formulation:	pH7.4 PBS, 0.05% NaN <sub>3</sub> , 40% Glycerol
Purification:	Antigen affinity purification
Conjugation:	Unconjugated
Storage:	Store at -20°C as received.
Stability:	Stable for 12 months from date of receipt.
Predicted Protein Size:	60 kDa
Gene Name:	serine/threonine kinase 39
Database Link:	<a href="#">NP_037365</a> <a href="#">Entrez Gene 53416 Mouse</a> <a href="#">Entrez Gene 54348 Rat</a> <a href="#">Entrez Gene 27347 Human</a> <a href="#">Q9UEW8</a>
Background:	This gene encodes a serine/threonine kinase that is thought to function in the cellular stress response pathway. The kinase is activated in response to hypotonic stress, leading to phosphorylation of several cation-chloride-coupled cotransporters. The catalytically active kinase specifically activates the p38 MAP kinase pathway, and its interaction with p38 decreases upon cellular stress, suggesting that this kinase may serve as an intermediate in the response to cellular stress.
Synonyms:	DCHT; PASK; SPAK
Protein Families:	Druggable Genome, Protein Kinase



[View online »](#)

## Product images:



Gel: 8%SDS-PAGE  
Lysate: 50  $\mu$ g  
Lane 1-2: Human liver cancer tissue  
Human colon cancer tissue  
Primary antibody: [TA350945] (STK39 Antibody)  
at dilution 1/800  
Secondary antibody: Goat anti rabbit IgG at  
1/8000 dilution  
Exposure time: 1 minute