

Product datasheet for **TA350943**

CD133 (PROM1) Rabbit Polyclonal Antibody

Product data:

Product Type:	Primary Antibodies
Applications:	IHC
Recommended Dilution:	IHC: 50-200 Positive control: Human lung cancer Predicted cell location: Cytoplasm
Reactivity:	Human, Mouse
Host:	Rabbit
Isotype:	IgG
Clonality:	Polyclonal
Immunogen:	Synthetic peptide of human PROM1
Formulation:	pH7.4 PBS, 0.05% NaN ₃ , 40% Glycerol
Concentration:	lot specific
Purification:	Antigen affinity purification
Conjugation:	Unconjugated
Storage:	Store at -20°C as received.
Stability:	Stable for 12 months from date of receipt.
Gene Name:	prominin 1
Database Link:	NP_006008 Entrez Gene 19126 Mouse Entrez Gene 8842 Human O43490

Background: This gene encodes a pentaspan transmembrane glycoprotein. The protein localizes to membrane protrusions and is often expressed on adult stem cells, where it is thought to function in maintaining stem cell properties by suppressing differentiation. Mutations in this gene have been shown to result in retinitis pigmentosa and Stargardt disease. Expression of this gene is also associated with several types of cancer. This gene is expressed from at least five alternative promoters that are expressed in a tissue-dependent manner. Multiple transcript variants encoding different isoforms have been found for this gene.

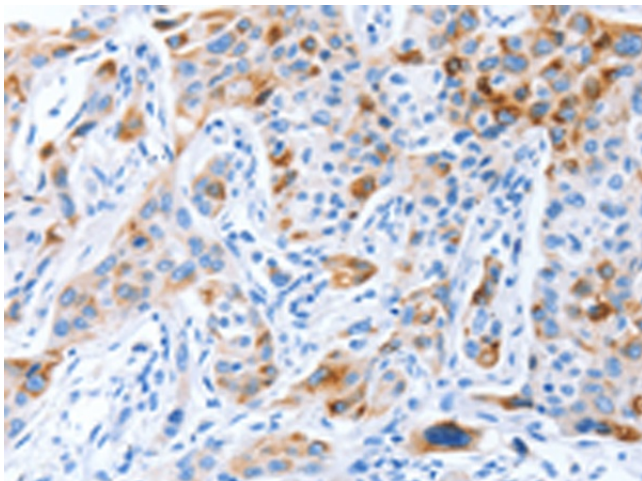
Synonyms: AC133; CD133; CORD12; MCDR2; MSTP061; PROML1; RP41; STGD4



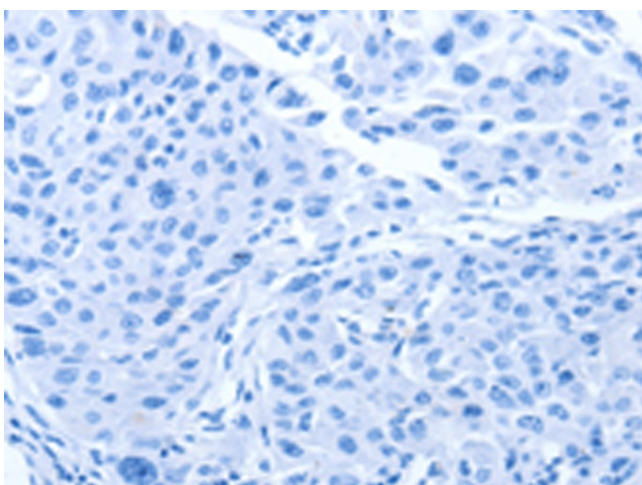
[View online »](#)

Protein Families: Druggable Genome, ES Cell Differentiation/IPS, Transmembrane

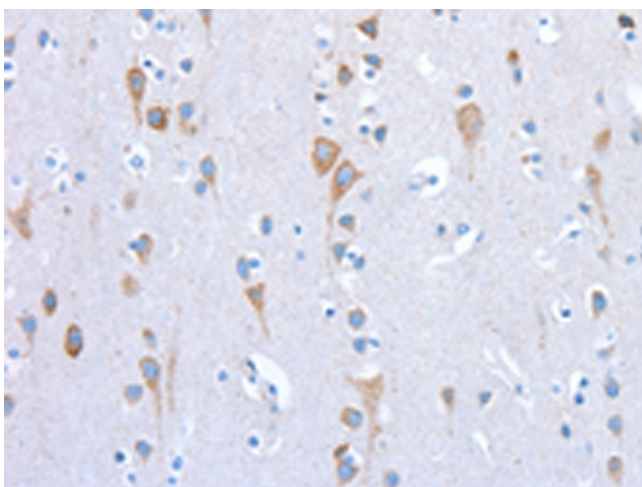
Product images:



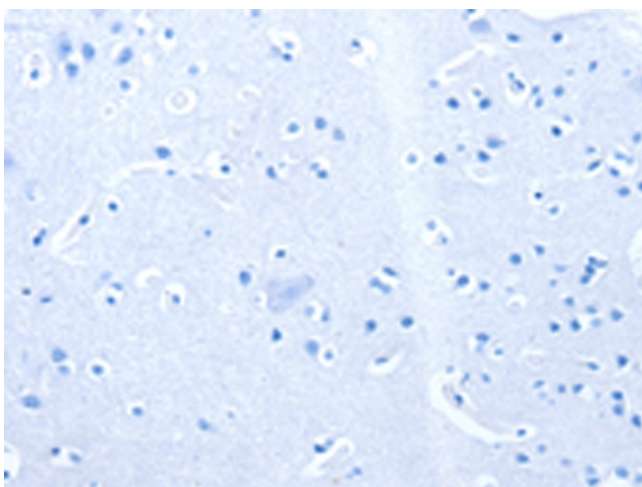
Immunohistochemistry of paraffin-embedded Human lung cancer tissue using TA350943 (PROM1 Antibody) at dilution 1/70 (Original magnification: $\times 200$)



Immunohistochemistry of paraffin-embedded Human lung cancer tissue using TA350943 (PROM1 Antibody) at dilution 1/70, treated with synthetic peptide. (Original magnification: $\times 200$)



Immunohistochemistry of paraffin-embedded Human brain tissue using TA350943 (PROM1 Antibody) at dilution 1/70 (Original magnification: ×200)



Immunohistochemistry of paraffin-embedded Human brain tissue using TA350943 (PROM1 Antibody) at dilution 1/70, treated with synthetic peptide. (Original magnification: ×200)