

Product datasheet for TA350936

SPR Rabbit Polyclonal Antibody

Product data:

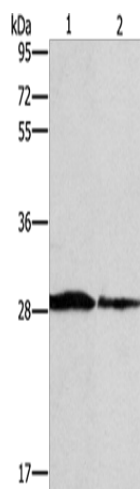
Product Type:	Primary Antibodies
Applications:	IHC, WB
Recommended Dilution:	WB: 500-2000 WB positive control: Human chromaffin cells tumor tissue and lovo cells IHC: 50-200 Positive control: Human breast cancer Predicted cell location: Cytoplasm
Reactivity:	Human
Host:	Rabbit
Isotype:	IgG
Clonality:	Polyclonal
Immunogen:	Synthetic peptide of human SPR
Formulation:	pH7.4 PBS, 0.05% NaN ₃ , 40% Glycerol
Concentration:	lot specific
Purification:	Antigen affinity purification
Conjugation:	Unconjugated
Storage:	Store at -20°C as received.
Stability:	Stable for 12 months from date of receipt.
Predicted Protein Size:	28 kDa
Gene Name:	sepiapterin reductase (7,8-dihydrobiopterin:NADP+ oxidoreductase)
Database Link:	NP_003115 Entrez Gene 6697 Human P35270
Background:	This gene encodes an aldo-keto reductase that catalyzes the NADPH-dependent reduction of pteridine derivatives and is important in the biosynthesis of tetrahydrobiopterin (BH ₄). Mutations in this gene result in DOPA-responsive dystonia due to sepiapterin reductase deficiency. A pseudogene has been identified on chromosome 1.
Synonyms:	SDR38C1


[View online »](#)

Protein Families: Druggable Genome

Protein Pathways: Folate biosynthesis, Metabolic pathways

Product images:



Gel: 10%SDS-PAGE

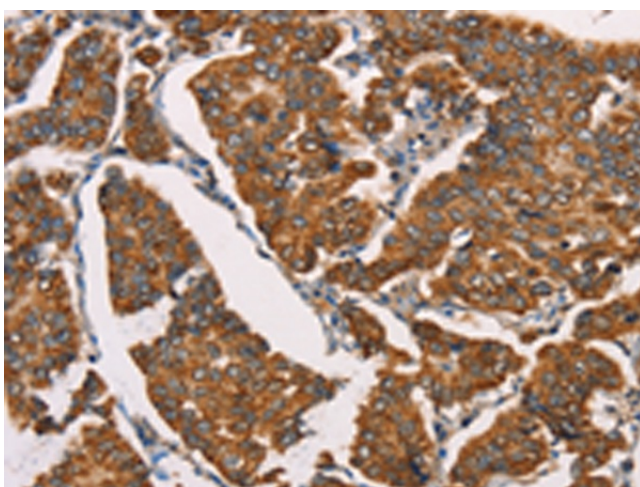
Lysate: 40 µg

Lane 1-2: Human chromaffin cell tumor tissue
lovo cells

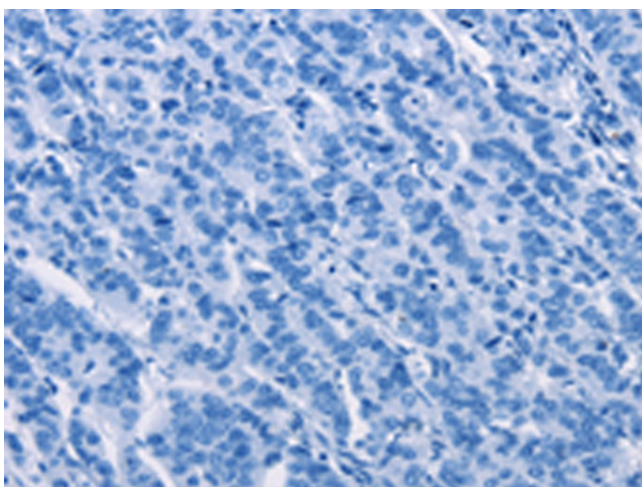
Primary antibody: TA350936 (SPR Antibody) at
dilution 1/1500

Secondary antibody: Goat anti rabbit IgG at
1/8000 dilution

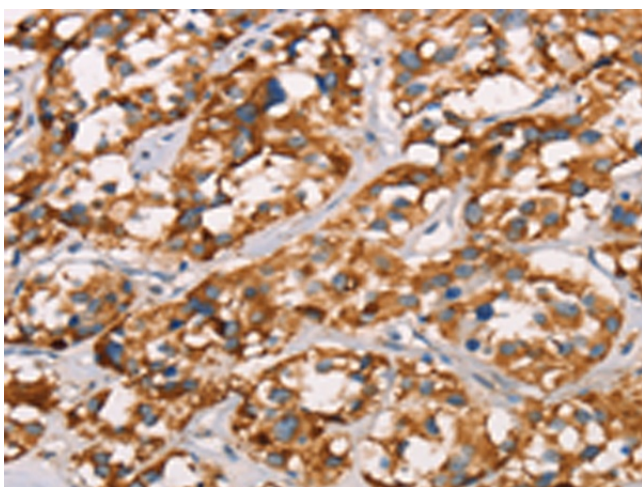
Exposure time: 10 seconds



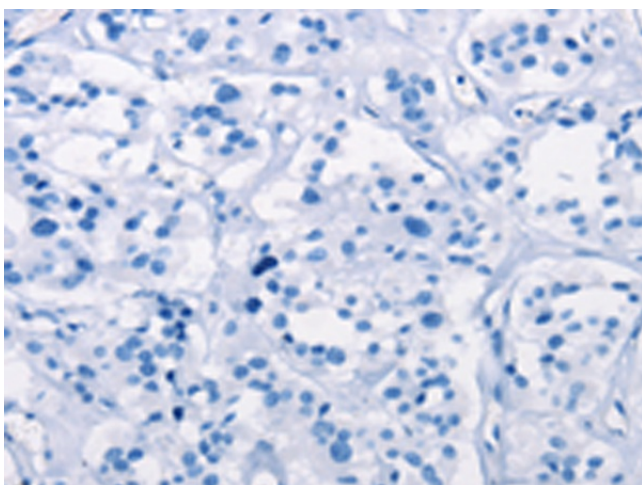
Immunohistochemistry of paraffin-embedded
Human breast cancer tissue using TA350936 (SPR
Antibody) at dilution 1/40 (Original magnification:
×200)



Immunohistochemistry of paraffin-embedded Human breast cancer tissue using TA350936 (SPR Antibody) at dilution 1/40, treated with synthetic peptide. (Original magnification: ×200)



Immunohistochemistry of paraffin-embedded Human thyroid cancer tissue using TA350936 (SPR Antibody) at dilution 1/40 (Original magnification: ×200)



Immunohistochemistry of paraffin-embedded Human thyroid cancer tissue using TA350936 (SPR Antibody) at dilution 1/40, treated with synthetic peptide. (Original magnification: ×200)