

Product datasheet for **TA350933**

NDNL2 (NSMCE3) Rabbit Polyclonal Antibody

Product data:

Product Type:	Primary Antibodies
Applications:	IHC, WB
Recommended Dilution:	WB: 500-2000 WB positive control: LO2 cell lysate IHC: 50-200 Positive control: Human colorectal cancer Predicted cell location: Cytoplasm and Nucleus
Reactivity:	Human
Host:	Rabbit
Isotype:	IgG
Clonality:	Polyclonal
Immunogen:	Synthetic peptide of human NDNL2
Formulation:	pH7.4 PBS, 0.05% NaN ₃ , 40% Glycerol
Concentration:	lot specific
Purification:	Antigen affinity purification
Conjugation:	Unconjugated
Storage:	Store at -20°C as received.
Stability:	Stable for 12 months from date of receipt.
Predicted Protein Size:	34 kDa
Gene Name:	NSE3 homolog, SMC5-SMC6 complex component
Database Link:	NP_619649 Entrez Gene 56160 Human Q96MG7



[View online »](#)

Background:

The protein encoded by this gene is part of the SMC5-6 chromatin reorganizing complex and is a member of the MAGE superfamily. This is an intronless gene. Component of the SMC5-SMC6 complex, a complex involved in repair of DNA double-strand breaks by homologous recombination. The complex may promote sister chromatid homologous recombination by recruiting the SMC1-SMC3 cohesin complex to double-strand breaks. The complex is required for telomere maintenance via recombination in ALT (alternative lengthening of telomeres) cell lines and mediates sumoylation of shelterin complex (telosome) components which is proposed to lead to shelterin complex disassembly in ALT-associated PML bodies (APBs).

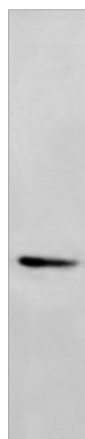
Synonyms:

HCA4; MAGEG1; MAGEL3; NSE3; NSMCE3

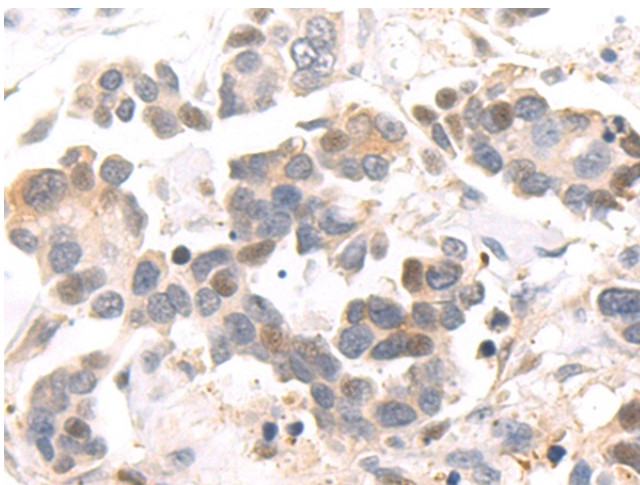
Product images:

kDa

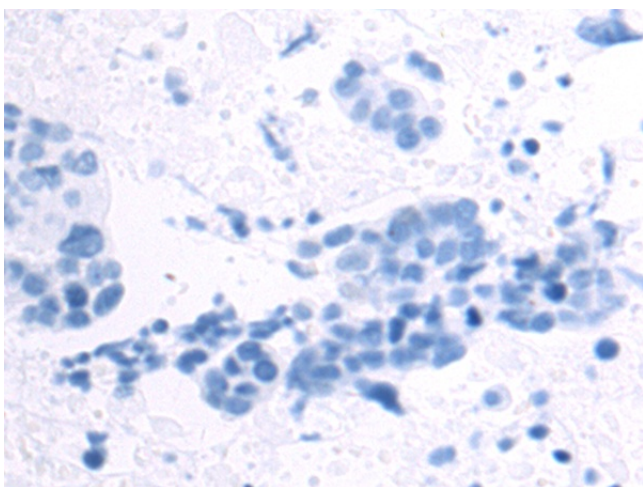
130—
95—
72—
55—
36—
28—
17—



Gel: 8%SDS-PAGE
Lysate: 40 µg
Lane: LO2 cell lysate
Primary antibody: TA350933 (NSMCE3 Antibody) at dilution 1/400
Secondary antibody: Goat anti rabbit IgG at 1/5000 dilution
Exposure time: 90 seconds



Immunohistochemistry of paraffin-embedded Human colorectal cancer tissue using TA350933 (NSMCE3 Antibody) at dilution 1/55 (Original magnification: ×200)



Immunohistochemistry of paraffin-embedded Human colorectal cancer tissue using TA350933 (NSMCE3 Antibody) at dilution 1/55, treated with synthetic peptide. (Original magnification: ×200)